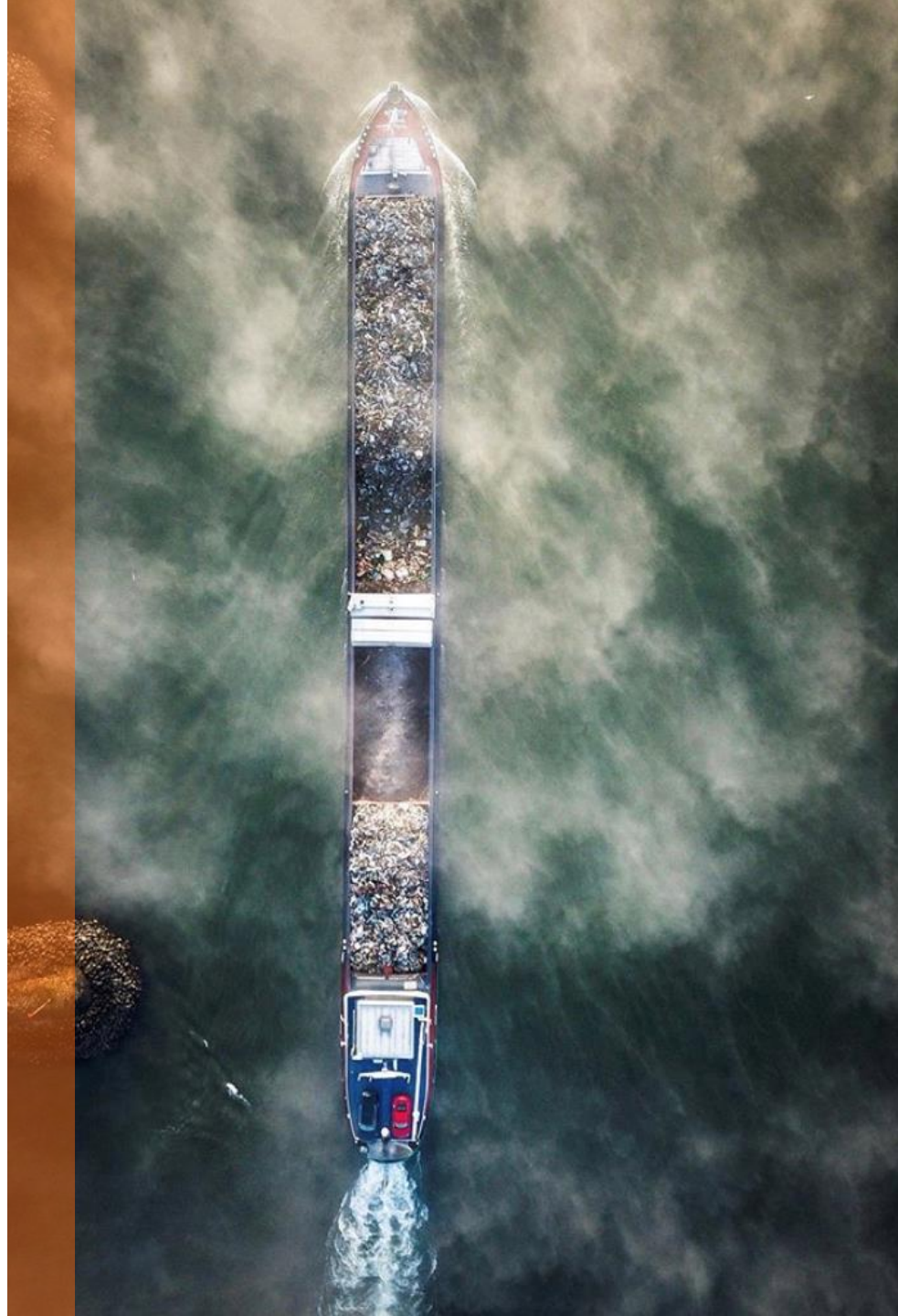




We keep you informed trough every step of the way

Background information

VEMASYS® is founded in 2015. Since then, the platform has been optimized for the needs of different inland shipping companies. VEMASYS® is a project around the European master plan for the digitization of inland navigation (within TEN-T and COMEX) and is therefore supported by the European Commission (DG MOVE) and several authorities.



Crew Management



Charter & Planning



Financial



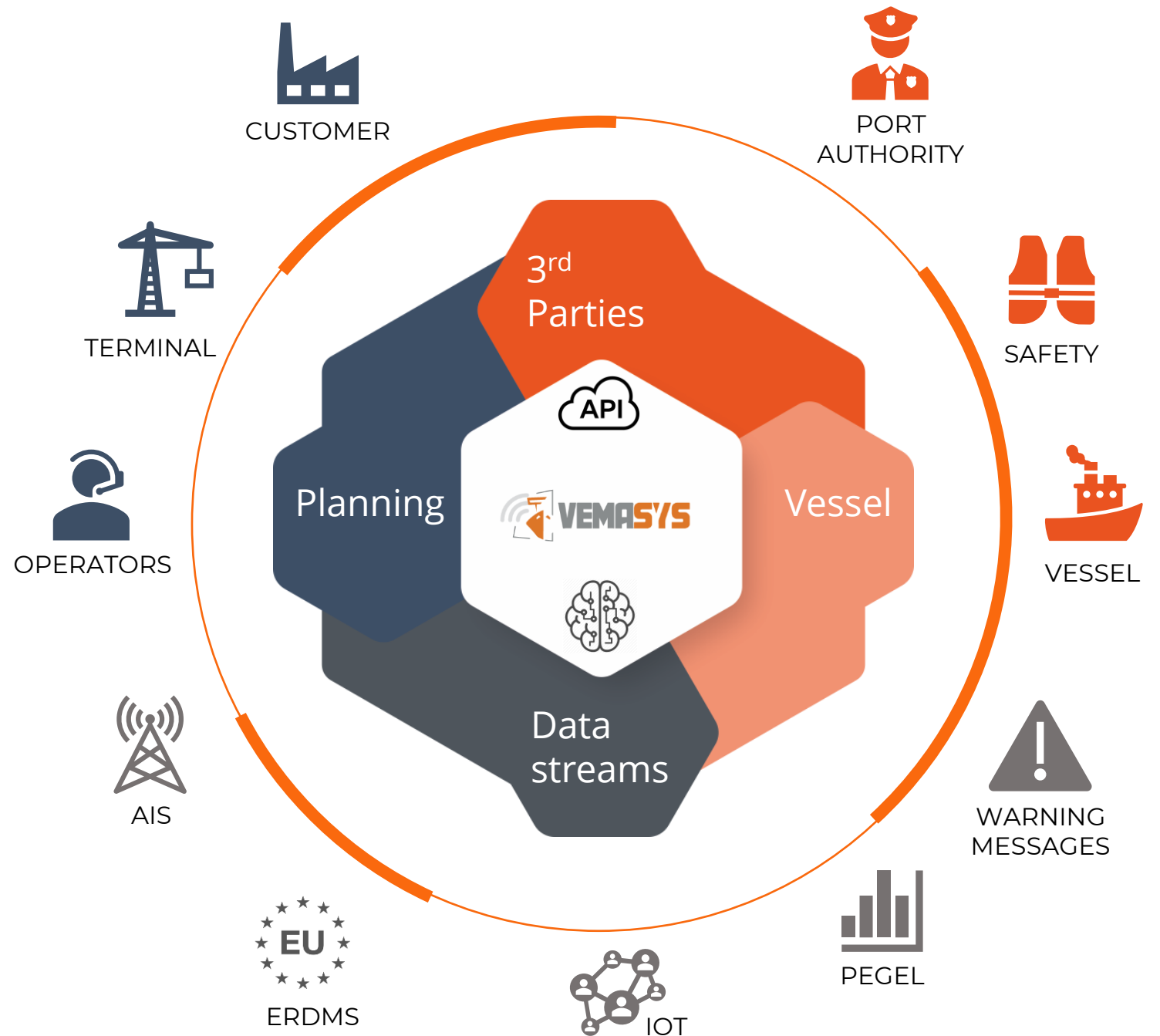
Technical



Safety

ECOSYSTEM

The platform is can be used by any party direct or indirect and is based on standard processes for inland shipping. These quality of these processes depends highly on correct documentation and availability of these documents to all parties involved.



WHY DIGITAL TRANSFORMATION



Increase Productivity

Digital data is highly searchable, easily transferable and can increase employer efficiency, improve workflow & **enhance customer relationships.**



Boost Efficiency

Digitization can greatly improve a process response time in dealing with functions such as customer inquiries, logistical problems, and government inquiry due to instant availability of the documents to all parties involved.



Time reduction

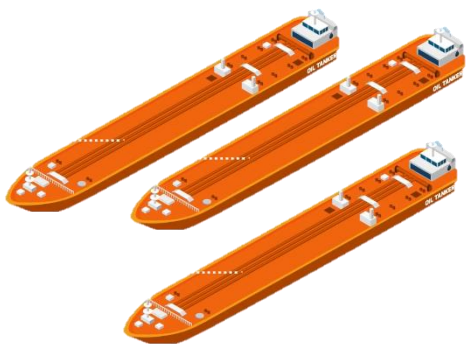
Electronic files also minimize or eliminate the transportation costs of moving documents from place to place.



Streamline Operation

It's so much easier to make a copy of digital data versus photocopying stacks of printed invoices. Documents that have been converted can be easily accessed through the cloud or system using any device, anywhere, anytime.

Documents per department



FLEET MANAGEMENT

Plan, document, manage and control every ship. All information available on the entire spectrum ranging from maintenance, certifications, crew planning to fully automated **logbooks**.



LOGISTIC PLANNING

Logistics planning made easy and **transparent**. Plan barges and cargo, follow-up and receive notifications of ETA's changes. Meanwhile all **smart contracts and documents** are available.



INSIGHT TOOLING

Exploiting every piece of data from every single step of the supply chain brings immense value to the company and authorities. It ensures end-to-end visibility for all parties. Co2 calculations are instantly available.



SAFETY

All certificates and forms are stored digitally. The data can be mapped on procedures and legislation to ensure safety on the highest level possible.



FINANCIAL

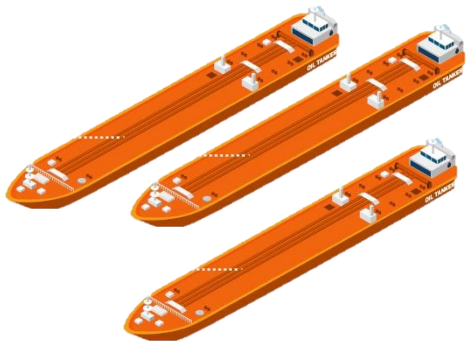
The digital documents provide all the information for invoicing, harbor dues, tax and intra-Community taxes.



AI & DATA SERVICE

Artificial Intelligence (AI) has taken the automotive industry by storm to drive the development of level-4 and level-5 autonomous vehicles. By applying proven AI technology and tailor made **algorithms** we are building the autonomous barges of tomorrow.

Fleet management



FLEET MANAGEMENT

Plan, document, manage and control every ship. All information available on the entire spectrum ranging from maintenance, certifications, crew planning to fully automated **logbooks**.

Actual location

Logbook

Tuesday 30 august 2022

- 07:30 → [Köln] Severinsbrücke
- 06:38 → [Köln] Hafen Köln Niehl
- [Leverkusen]
- 06:02 → Rheinbrücke Leverkusen
- 04:20 → [Zons] Fähre Zons
- 02:02 → [Neuss] Hafen Neuss
- 01:42 → [Düsseldorf] Hafen Düsseldorf

Monday 29 august 2022

- 16:26 → 22:06 [Duisburg] Unterwasser Schleuse Meiderich ~ 5 hours
- 05:43 → 08:11 [Herne] Oberwasser Herne-Ost ~ 2 hours
- 01:16 → 03:41 [Herne] Oberwasser Herne-Ost ~ 2 hours
- 00:02 → [Datteln] Dortmund-Ems Kanal - Rhein-Herne Kanal

Chapter	BLUE C	Vema Ship One	Vema Ship Two
1.1 - Certificate of approval (1)	✓	!	!
1.2 - 1st aid (1)	⚠	↓	↓
2.1.1 - Loading tanks (1)	✓	✓	↓
2.2.1 - Fire detection system fixed (1)	✓	!	↓
2.2.2 - Fire hoses (1)	!	↓	↓

Logistic planning



LOGISTIC PLANNING

Logistics planning made easy and **transparent**. Plan barges and cargo, follow-up and receive notifications of ETA's changes. Meanwhile all **smart contracts and documents** are available.

Contract

General information * Parties * Financial * Cargo Waiting compensation

Payment type * Monthly rate

Unit price * € 25 000

Pricing adjustments
+ Add pricing adjustment

KWZ clause
KWZ conditions

Gasoil clause
CBRB 50,-

Lubricant clause
contract

Ice/high water clause
[G] Belgische wet 2011

Reefer cost
Please select an option

Cleaning cost
Please select an option

Heating cost
Please select an option

Liquid - Discharge Release
BLUE C - [amsterdam] 00BUN (Bunge)

Liquid - Bill of Lading - Koole
BLUE C - [Acy-Romance] Acy-Romance (Vivescia)

Liquid - Tank Inspection - SGS
BLUE C - [Acy-Romance] Acy-Romance (Vivescia)

Liquid - Shore Measurements (loading) - SGS
BLUE C - [Acy-Romance] Acy-Romance (Vivescia)

Liquid - Vessel Measurements (loading) - SGS
BLUE C - [Acy-Romance] Acy-Romance (Vivescia)

Liquid - Seals (loading)
BLUE C - [Acy-Romance] Acy-Romance (Vivescia)

Liquid - Vessel Measurements (unloading) - SGS
BLUE C - [amsterdam] 00BUN (Bunge)

Food Safety Result
BLUE C - [amsterdam] 00BUN (Bunge)

Liquid - Declaration of Release - Part 2 (Carrier)
BLUE C - [amsterdam] 00BUN (Bunge)

Liquid - Declaration of Release - Part 3 (Washings recipient)
BLUE C - [amsterdam] 00BUN (Bunge)

Liquid - Seals (unloading)
BLUE C - [amsterdam] 00BUN (Bunge)

Test Mandy Tree 24/08/2022 00:00
Provided by Oscar Kuiper

Vessel BLUE C
Provided by Mandy Dubois

Ex / into

Commodity 1511000000 - RBD Palm Oil
Provided by Mandy Dubois

Terminal / Port [amsterdam] 00BUN (Bunge)
Provided by Mandy Dubois

Countersurvey

Corr. factor 0,00068

Density ref. * 0,7800

Measurements * +

Stop tanks * +

Commenced

Hose connected

Completed

Disconnected

Bill of lading weight (MT in air) 5 000
Provided by Mandy Dubois

Density ref. temp. (°C) * 65,0

Total volume (L) * 7 000 000

Total MT on board * 4 500,000

Total MT in air * 4 550,000

Insight tooling



INSIGHT TOOLING

Exploiting every piece of data from every single step of the supply chain brings immense value to the company and authorities. It ensures end-to-end visibility for all parties. Co2 calculations are instantly available.

Status

One view on your business

Creation 2021-09-16 | [Moerdijk] Shell Moerdijk Departed | [Antwerpen] Blue Terminal Arrived (docked) | Completed

Details

Reference	Reis 01 Blue
Orderer	Blue Shipping
Vessel	Vema Ship One

Locations

2100 MT [UN 1202] DIESELOLIE of GASOLIE of STOOKOLIE, LICHT (vlampunt ten hoogste 60 °C) ← Loading

Planned	2021-09-16 00:00
Captain ETA	2021-09-18 07:15
Started	2021-09-18 10:00

Actions

Start	End	Type
2021-09-18 10:00	—	Loading

Formalities

<u>Loading certificate</u> Vema Ship One - [Moerdijk] Shell Moerdijk	⋮
<u>Cleaning file</u> Vema Ship One - [Moerdijk] Shell Moerdijk	⋮

Updates

Gasoil level has been updated: 2022-02-02 17:52

Total ...	14200L
-----------	--------

VemaUser Demo has fulfilled a requirement: 2021-10-18 13:58

<u>Heating_Costs</u> Reis 01 Blue / Reis 01 Blue (16/09/2021)	✓
--	---

Gasoil level has been updated: 2021-09-17 15:17

Total ...	16200L
-----------	--------

Safety



SAFETY

All certificates and forms are stored digitally. The data can be mapped on procedures and legislation to ensure safety on the highest level possible.

- 3 INSPECTIE EN AUDITS
 - 3.1 INSPECTIERAPPORTERING HUISPARTICULIEREN EN SCHEPEN
 - 3.2 SCHEEPSBEZOEKEN
 - 3.2.1 SCHEEPSBEZOEKEN
 - 3.2.2 INSPECTIERAPPORTEN
 - 3.3 CONSTATERINGEN - COMMUNICATIE EN VERKLARINGEN
 - 3.4 TRAININGEN EN OPLEIDINGEN AAN BOORD
 - 3.4.1 BRAND- EN EVACUATIEOEFENINGEN
 - 3.4.1.0.1 CHECKLIST BRAND- EVACUATIEOEFENING 2021
 - 3.4.1.1 CHECKLIST BRAND- EVACUATIEOEFENING 2019-2020
 - 3.4.1.2 VERSLAG BRAND EVACUATIEOEFENING
 - 3.4.1.3 CHECKLIST BETREDEN VAN WALGANGEN MET OEFENINGEN, TRAINING & INCIDENTEN
 - 3.4.2 MAANDELIJKE TRAININGEN AAN BOORD
 - 3.4.2.1 MAANDELIJKE TRAINING MEI 2020
 - 3.4.2.2 MAANDELIJKE TRAINING JULI 2020
 - 3.4.2.3 MAANDELIJKE TRAINING AUGUSTUS

3.4.1.1 Checklist brand- evacuatieoefening 2019-2020

Scenario:

Het schip ligt klaar voor het laden of lossen. De bemanning trekt de juiste beschermingskledij aan. Ook de correcte adembescherming wordt klaargelegd. Alle verbindingen worden aangekoppeld, flienzen en laad- losslangen zijn aangesloten. De bemanning is in de weer om de laad- losopdrachten te kunnen uitvoeren. De oplijning wordt door de laadverantwoordelijke gecontroleerd. De spilbak wordt geplaatst. Spilrand wordt afgesloten als spilpreventieve maatregel, Manometer en aarding worden aangebracht. De laad- losopdracht kan beginnen, Er wordt gepompt met product. Tijdens het pompen wordt een bemanningslid onwel in zone 01. Hij klaagt over hevige hoofdpijn en misselijkheid. De geuren die vrijkomen tijdens de atmosferische ladingopdracht ervaren de bemanningsleden als prikkelend van aard op de ademhalingsorganen. Wat zijn de acties die de bemanning en de ADN verantwoordelijke uitvoert? Hoe worden de metingen door de ADN verantwoordelijk uitgevoerd. Wat of welke metingen voert hij uit en welke toestellen zijn in gebruik aan boord. Wat zijn de preventie maatregelen die door de bijkomende acties in gebruik zijn. Kan de laadopdracht verder plaatsvinden? Welke achterliggende acties onderneemt de schipper aan boord? Wat zijn de resultaten van de metingen en waar worden deze opgetekend. Wij willen dat ook aan deze bemanningsleden of bemanningslid de eerste zorgen worden toegebracht. Hoe en op welke wijze worden symptomen van eventuele vergiftiging bij het slachtoffer vastgesteld. Op welke wijze gaat u de eerste zorgen gaan toedienen bij het slachtoffer. Op welke wijze gaat de schipper bijkomende brandpreventieve maatregelen gaan opleggen aan boord? Evaluatie om te evacueren van het schip laten wij in open scenario naar de bemanning. Dit wordt afhankelijk van de situatie uitgevoerd met of zonder reddingsloep.

© 2022 Blm

Form submissions

+ Add View archive

	Title	Contact person	Updated at	Created at				
	Approved	3.4.1.1 Checklist Brand- Evacuatieoefening 2019-2020	Prisca Jacobs	2021-07-15 16:13	2019-02-05 10:01			
	Approved	3.4.1.1 Checklist Brand- Evacuatieoefening 2019-2020	Prisca Jacobs	2021-07-15 16:13	2019-02-05 10:06			
	Edit	3.4.1.1 Checklist Brand- Evacuatieoefening 2019-2020	Prisca Jacobs	2019-08-12 12:15	2019-08-12 12:15			

Finance



FINANCIAL

The digital documents provide all the information for invoicing, harbour dues, tax and intra-Community taxes.

Blue Fleet



INVOICE

Invoice reference: OUT001
Invoice date: 30/08/2022
Due date: 14/09/2022

DEMO Customer

BE00123
Vosscheschijnstraat 22
2030 Antwerpen
Belgium

Description	Amount	Unit price	Total excl. VAT	VAT	Total incl. VAT
Cargo 1234ab - 1234ab	755,000 MT (Air)	€ 15,00	€ 11 325,00	0,00%	€ 11 325,00
CBRB 12 %	755,000	€ 1,80	€ 1 359,00	0,00%	€ 1 359,00
ALLENDORF 0 cm - 343,000 cm - 13%	11 325,000	€ 0,13	€ 1 472,25	0,00%	€ 1 472,25
Demurrage 1234ab/1234ab	45,000 hrs	€ 23,00	€ 1 035,00	0,00%	€ 1 035,00

BlueC
Your reference : 1234ab
Our reference : 1234ab

Loading port : [Frankfurt am Main] 00OIL (Oiltanking)
Discharging port : [Karlsruhe] 00OIL (Oiltanking Karlsruhe)
Product: 700 MT (755 MT (Air)) 1514900000 - CRUDE RAPESEED OIL

Conditions : Invoice conditions
Testing invoicing conditions
Demurrage conditions : Waiting compensation

Subtotal	€ 15 191,25
DEMO commission (DEMO Customer) -5%	€ -759,56
Subtotal (incl. commission)	€ 14 431,69
VAT	€ 0,00
Total (incl. vat)	€ 14 431,69

To be paid € 14 431,69
State when paying : OUT001

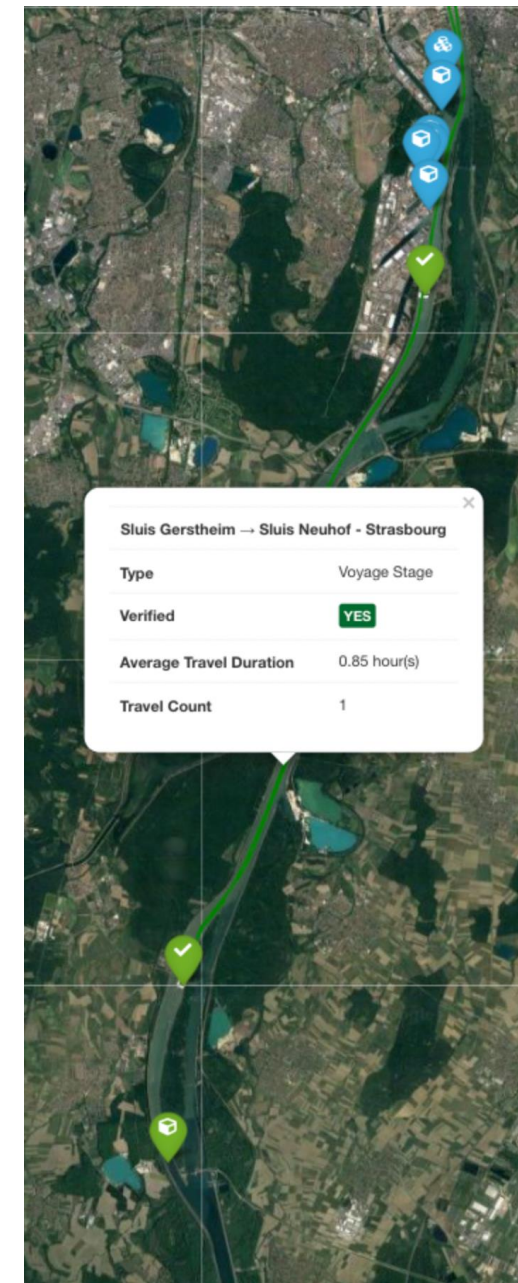
No VAT - reverse charge system applicable

Future use



AI & DATA SERVICE

The data and documents stored can be used to develop legislation for autonomous barges of tomorrow.



Who is in charge?

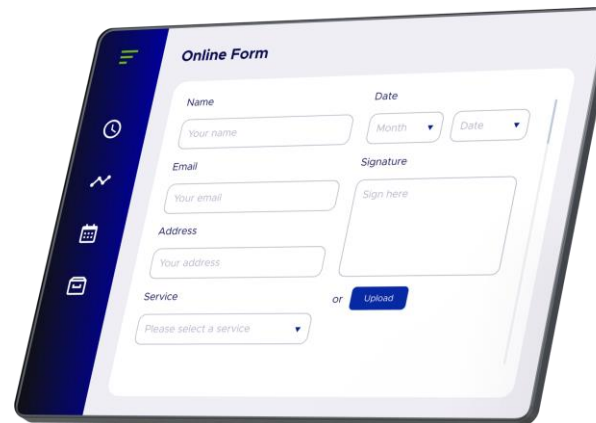
Legislation



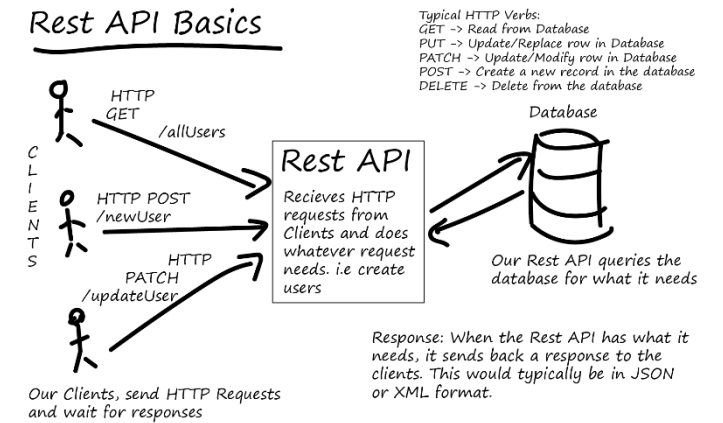
Standardization



Digital forms (prefill)



API conventions



We keep you informed through every step of the way

Let's have a discussion

Contact@vemasys.be

