

ANNEX 12

(DANGEROUS) GOODS REPORTING - ERINOT

1. ERI notification message

The ERI notification message (ERINOT) is a specific use of the UN/EDIFACT 'International Forwarding and Transport Dangerous Goods Notification (IFTDGN)' message as it has been developed within the PROTECT organisation. The ERINOT message reproduced in paragraph 3. is based on UN/EDIFACT directory 98.B and Protect version 1.0. The ERINOT message has also been developed in an XML format (see paragraph 4.)

2. Functional description and overall information related to ERINOT message in UN/EDIFACT format

The segment table of ERINOT message is depicted in paragraph 2(d). The branching diagram of the ERINOT message is depicted in paragraph 2(e).

To ensure the usage of the message also under special circumstances such as a convoy of ships, some extra qualifiers have been introduced for the RFF segments in the TDT group.

a) Field of application

The ERI notification message (ERINOT) shall be used by skippers and on behalf of skippers by transport operators and agents for the reporting of dangerous and non-dangerous cargo carried by inland waterway vessels.

The message supports the implementation — by means of EDI — of the following reporting needs:

- i) applicable police regulations either on Member States level or locally (eg. specific requirements in specific ports);
- ii) reporting requirements set by river commissions (eg. on the Rhine set by CCNR);
- iii) goods reporting for statistics purposes (Member States level or Eurostat).

b) Principles

The ERINOT message is a specific standard implementation and use of the UN/EDIFACT 'International Forwarding and Transport Dangerous Goods Notification (IFTDGN)' message such as has been developed within the PROTECT seaports organisation.

This standard message implementation guideline has been accepted by the IMO for the reporting of dangerous goods to authorities. It has been designated as the message from the party responsible to report 'dangerous' goods to the authority performing the control and checks on conformance with the legal requirements. The message is conveying information on the 'dangerous' goods being loaded, discharged or in transit relating to a means of transport.

Where reporting is mandatory and if technically feasible, an ERI notification message is to be composed and sent to the competent authority for each inland waterway transport. However all vessels are invited to report electronically to the competent authorities whenever possible. Where available, this may be done through a Single Window¹ to come to the envisioned reduction of procedures.

The notification message based on this standard message can be depicted as follows:

'ERI (Electronic Reporting International) Notification Message' with the following types:

- i) transport notification from vessel to authority from ship to shore;
 - ii) transport notification from carrier to authority from shore to shore;
 - iii) passage notification from authority to authority.
- c) Segment index (alphabetical sequence by tag)
- BGM Beginning of message
 - CNI Consignment information
 - COM Communication contact
 - CTA Contact information
 - DGS Dangerous goods
 - DTM Date/time/period
 - EQD Equipment details
 - FTX Free text
 - GID Goods item details
 - HAN Handling instructions
 - LOC Place/location identification
 - MEA Measurements
 - NAD Name and address

¹ UN/CEFACT Recommendation No 33, Recommendation and Guidelines on establishing a Single Window.

RFF Reference
 SGP Split goods placement
 TDT Details of transport
 UNH Message header
 UNT Message trailer

d) Segment table

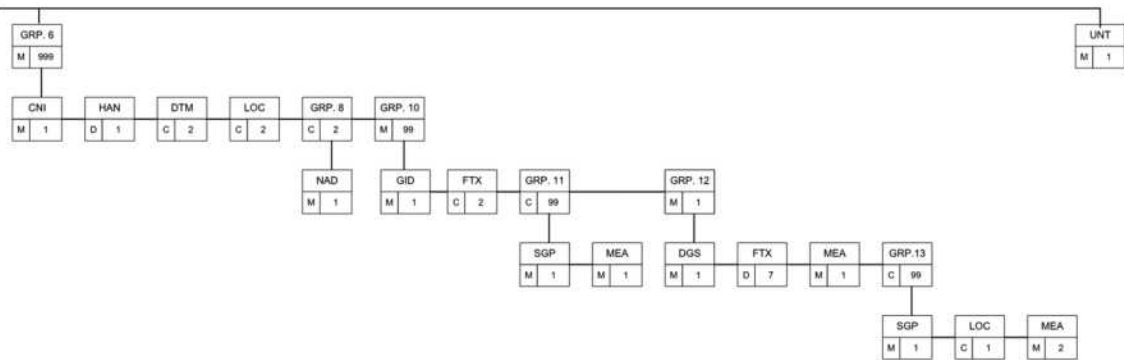
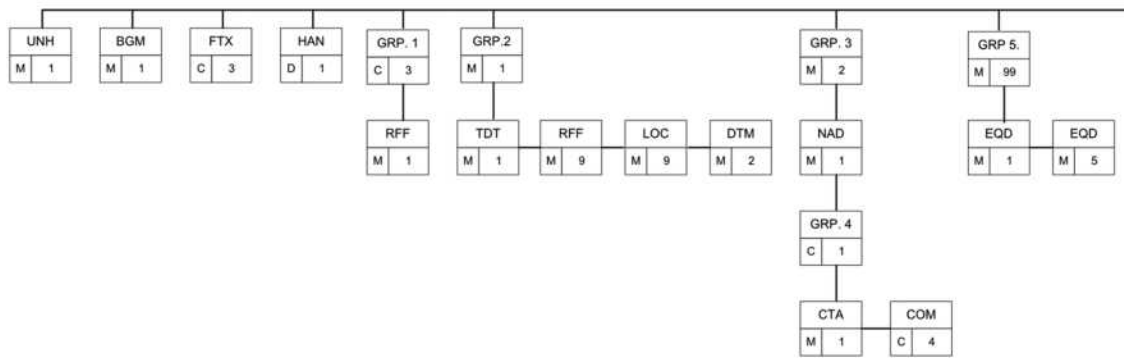
[S] Status, [R] Recurrence, [M] Mandatory, [C] Conditional, [D] Dependent on business rules

| Pos | Tag | Name | S | R |
|------|-----|-------------------------------|------|-----|
| 0010 | UNH | Message header | M | 1 |
| 0020 | BGM | Beginning of message | M | 1 |
| 0040 | FTX | Free text | C | 3 |
| 0050 | HAN | Handling instructions | D[1] | 1 |
| 0060 | | Segment Group 1 | C | 3 |
| 0070 | REF | Reference | M | 1 |
| 0090 | | Segment Group 2 | M | 1 |
| 0100 | TDT | Details of transport | M | 1 |
| 0110 | RFF | Reference | M | 9 |
| 0120 | LOC | Place/location identification | M | 9 |
| 0130 | DTM | Date/time/period | M | 2 |
| 0140 | | Segment Group 3 | M | 2 |
| 0150 | NAD | Name and address | M | 1 |
| 0160 | | Segment Group 4 | C | 1 |
| 0170 | CTA | Contact information | M | 1 |
| 0180 | COM | Communication contact | C | 4 |
| 0190 | | Segment Group 5 | M | 99 |
| 0200 | EQD | Equipment details | M | 1 |
| 0210 | MEA | Measurements | M | 5 |
| 0220 | | Segment Group 6 | M | 999 |
| 0230 | CNI | Consignment information | M | 1 |
| 0240 | HAN | Handling instructions | D[1] | 1 |
| 0250 | DTM | Date/time/period | C | 2 |
| 0260 | LOC | Place/location identification | C | 2 |

| Pos | Tag | Name | S | R |
|------|-----|-------------------------------|------|----|
| 0300 | | Segment Group 8 | C | 2 |
| 0310 | NAD | Name and address | M | 1 |
| 0360 | | Segment Group 10 | M | 99 |
| 0370 | GID | Goods item details | M | 1 |
| 0380 | FTX | Free text | C | 2 |
| 0400 | | Segment Group 11 | C | 99 |
| 0410 | SGP | Split goods placement | M | 1 |
| 0420 | MEA | Measurements | M | 1 |
| 0430 | | Segment Group 12 | M | 1 |
| 0440 | DGS | Dangerous goods | M | 1 |
| 0450 | FTX | Free text | D[5] | 7 |
| 4600 | MEA | Measurements | M | 1 |
| 4700 | LOC | Place/location identification | C | 0 |
| 0480 | RFF | Reference | C | 0 |
| 0490 | | Segment Group 13 | C | 99 |
| 0500 | SGP | Split goods placement | M | 1 |
| 0510 | LOC | Place/location identification | C | 1 |
| 0520 | MEA | Measurements | D[6] | 2 |
| 0530 | UNT | Message trailer | M | 1 |

| Business rules | |
|-----------------------|---|
| D[1] | The HAN-segment has to appear once, either in the vessel voyage details, on message level, or in the cargo details |
| D[5] | If mandatory by the applicable police regulations, this data shall be given in compliance with police regulations and then in accordance with the ADN |
| D[6] | The message shall contain at least one MEA-segment For the transport of liquid cargo the MEA with the measurement purpose qualifier 'VOL' shall be used For container transport the MEA with the measurement purpose qualifier 'WT' shall be used In case of a tank container both measurement purpose qualifiers are required |
| D[USE 1] | If the code is XXXXX, then this data-element shall be completed |
| D[USE 2] | If containers are carried, then this data shall be given |
| D[USE 3] | HS-code has preference |
| D[USE 4] | If the container type is known, then this data shall be given |
| D[USE 5] | If mandatory by the applicable police regulations, this data shall be given in compliance with police regulations and then in accordance with the ADN |
| D[USE 6] | The HAN-segment shall be present at least once |
| D[USE 7] | The transport equipment verified gross mass or estimated gross weight shall be given |

e) Branching diagram (ERI notification message)



3. ERINOT message structure in UN/EDIFACT format

Table 12-1 defines the structure of the segments and the data elements of the ERI notification message.

Table 12-1
ERI notification message ERINOT

| Segment Group | Segment Composite data element (C) Data element TAG | Level | Status | Format | Name | Description Qualifiers in quotation marks |
|---------------|---|-------|--------|------------------|---------------------------------------|--|
| 1 | 2 | 3 | 4 | 5 | 6 | 7 |
| | UNB | 0 | M | | <i>INTERCHANGE HEADER</i> | |
| | S001 | | M | | SYNTAX IDENTIFIER | |
| | 0001 | | M | a4 | Syntax identifier | 'UNOA' Controlling agency level A |
| | 0002 | | M | n1 | Syntax version number | '2' |
| | S002 | | M | | INTERCHANGE SENDER | |
| | 0004 | | M | an..35 (an25) | Sender identification | Mailbox number or unique name or the unique identifier of a RIS-centre or traffic post |
| | 0007 | | C | an..4 | Partner identification code qualifier | n.a. |
| | 0008 | | C | an..14 | Address for reverse routing | n.a. |
| | S003 | | M | | INTERCHANGE RECIPIENT | |
| | 0010 | | M | an..35 (an25) | Recipient identification | Mailbox number or unique name or the unique identifier of a RIS-centre or traffic post |

| 1 | 2 | 3 | 4 | 5 | 6 | 7 |
|---|------|---|---|--------|---|--|
| | 0007 | | C | an..4 | Partner identification code qualifier | n.a. |
| | 0014 | | C | an..14 | Routing address | n.a. |
| | S004 | | M | | DATE/TIME OF PREPARATION | |
| | 0017 | | M | n6 | Date | Generation date, YYMMDD |
| | 0019 | | M | n4 | Time | Generation time, HHMM |
| | 0020 | | M | an..14 | Interchange control reference | First 14 positions of the message reference number |
| | S005 | | | | RECIPIENTS REFERENCE, PASSWORD | n.a. |
| | 0022 | | | an..14 | Recipient's reference/password | n.a. |
| | 0025 | | | an2 | Recipient's reference, password qualifier | n.a. |
| | 0026 | | | an..14 | Application reference | n.a. |
| | 0029 | | | a1 | Processing priority code | n.a. |
| | 0031 | | C | n1 | Acknowledgement request | '1' = Sender requests acknowledgement, i.e. UNB and UNZ segments received and identified |
| | 0032 | | | an..35 | Communications agreement id | n.a. |
| | 0035 | | C | n1 | Test indicator | '1' = The interchange relates to a test message |
| | UNH | 0 | M | | MESSAGE HEADER | Identification, specification and heading of a message |
| | 0062 | | M | an..14 | Message reference number | First 14 positions of the message reference number |
| | S009 | | M | | MESSAGE IDENTIFIER | |

| 1 | 2 | 3 | 4 | 5 | 6 | 7 |
|---|------------|---|---|--------|------------------------------|--|
| | 0065 | | M | an..6 | Message type | 'IFTDGN', message type |
| | 0052 | | M | an..3 | Message version number | 'D' |
| | 0054 | | M | an..3 | Message release number | '98B' |
| | 0051 | | M | an..2 | Controlling agency | 'UN' |
| | 0057 | | M | an..6 | Association assigned code | 'ERI13', ERI Version 1.3 |
| | 0068 | | O | an..35 | Common access reference | This unique reference code is meant to have a common denominator for all messages for the same voyage |
| | S010 | | | | STATUS OF THE TRANSFER | n.a. |
| | 0070 | | | n..2 | Sequence of transfers | n.a. |
| | 0073 | | | a1 | First and last transfer | n.a. |
| | | | | | | |
| | BGM | 0 | M | | <i>BEGINNING OF MESSAGE</i> | Identification of the type and function of the message |
| | C002 | | M | | DOCUMENT/MESSAGE NAME | |
| | 1001 | | M | an..3 | Document/message name code | Type of message: 'VES', from vessel to RIS authority message 'CAR', from carrier to RIS authority message 'PAS', passage report from RIS authority to RIS authority (also see Annex 11(2)(g)) |
| | 1131 | | | an..3 | Code list qualifier | n.a. |
| | 3055 | | | an..3 | Code list responsible agency | n.a. |

| 1 | 2 | 3 | 4 | 5 | 6 | 7 |
|---|----------------|---|---|---------------|---------------------------------|--|
| | 1000 | | | an..35 | Document/message name | n.a. |
| | C106 | | M | | DOCUMENT/MESSAGE IDENTIFICATION | |
| | 1004 | | M | an..35 (an15) | Document identifier | Message reference number. This number shall be as unique as possible, both for sender and for receiver. If a message is received and then passed on to another receiver, the original message reference number shall be used. The transitional system shall in this case not generate another message reference number |
| | 1056 | | | an..9 | Version | n.a. |
| | 1060 | | | an..6 | Revision number | n.a. |
| | 1225 | | M | an..3 | Message function code | <i>Function of message:</i> '1' = cancellation message '9' = new message, (original) '5' = modification message '22' = Final transmission (End of voyage) '150' = Interruption of voyage '151' = Restart of voyage |
| | 4343 | | C | an..3 | Response type code | AQ |
| | | | | | | |
| | FTX (1) | 0 | C | | <i>FREE TEXT</i> | To notify the number of <i>persons on board</i> and the number of <i>blue cones</i> |
| | 4451 | | M | an..3 | Text subject code qualifier | 'SAF' for safety explanation |

| 1 | 2 | 3 | 4 | 5 | 6 | 7 |
|---|------|---|---|-----------------|------------------------------|---|
| | 4453 | | | an..3 | Free text function code | n.a. |
| | C107 | | | | TEXT REFERENCE | |
| | 4441 | | | an..17 | Free text identification | n.a. |
| | 1131 | | | an..3 | Code list qualifier | n.a. |
| | 3055 | | | an..3 | Code list responsible agency | n.a. |
| | C108 | | M | | TEXT LITERAL | Text |
| | 4440 | | M | an..70 (n4) | Free text | Total number of persons on board (If the total number of persons is not known or indicated, this field shall be filled with '9999') |
| | 4440 | | C | an..70 (an1) | Free text | '0', '1', '2', '3' for number of cones (inland vessel) 'B' for red signal flag (maritime vessel) 'V' for special permit Note: Number of cones '0' will indicate that this is the result of the system which calculated zero blue cones, if the field is left blank this will indicate that no data is available. |
| | 4440 | | C | an..70 (n4) | Free text | Number of passengers |
| | 4440 | | | an..70 | Free text | n.a. |
| | 4440 | | | an..70 | Free text | n.a. |
| | 3453 | | | an..3 | Language, coded | n.a. |
| | 4447 | | | an..3 | Text formatting, coded | n.a. |

| 1 | 2 | 3 | 4 | 5 | 6 | 7 |
|---|----------------|---|---|----------------|------------------------------|---|
| | | | | | | |
| | FTX (2) | 0 | C | | <i>FREE TEXT</i> | <i>To indicate whether the information in the message may be forwarded by the receiver to other authorities</i> |
| | 4451 | | M | an..3 | Text subject code qualifier | 'ACK' for 'Privacy statement' or 'Confidential nature' |
| | 4453 | | | an..3 | Free text function code | n.a. |
| | C107 | | | | TEXT REFERENCE | |
| | 4441 | | | an..17 | Free text identification | n.a. |
| | 1131 | | | an..3 | Code list qualifier | n.a. |
| | 3055 | | | an..3 | Code list responsible agency | n.a. |
| | C108 | | M | | TEXT LITERAL | |
| | 4440 | | M | an..70 (a1) | Free text | 'Y = Yes, 'N' = No |
| | 4440 | | | an..70 | Free text | n.a. |
| | 4440 | | | an..70 | Free text | n.a. |
| | 4440 | | | an..70 | Free text | n.a. |
| | 4440 | | | an..70 | Free text | n.a. |
| | 3453 | | | an..3 | Language, coded | n.a. |
| | 4447 | | | an..3 | Text formatting, coded | n.a. |
| | | | | | | |
| | FTX(3) | 0 | C | | FREE TEXT | Reason for cancellation |

| 1 | 2 | 3 | 4 | 5 | 6 | 7 |
|---|---------------|---|------|--------|------------------------------|---|
| | 4451 | | M | an..3 | Text subject code qualifier | 'ACD' cancellation reason |
| | 4453 | | | an..3 | Free text function code | n.a. |
| | C107 | | M | | TEXT REFERENCE | Text identification |
| | 4441 | | M | an..17 | Free text identification | 'CAM' mistake in notification 'CAO' transport does not take place 'CAV' the main transport destination has changed 'CHD' the time of arrival has changed |
| | 1131 | | | an..3 | Code list qualifier | n.a. |
| | 3055 | | | an..3 | Code list responsible agency | n.a. |
| | C108 | | M | | | Text |
| | 4440 | | M | an..70 | Free text | Free description of the reason |
| | 4440 | | C | an..70 | Free text | Free text for further explanation |
| | 4440 | | C | an..70 | Free text | Free text for further explanation |
| | 4440 | | C | an..70 | Free text | Free text for further explanation |
| | 4440 | | C | an..70 | Free text | Free text for further explanation |
| | 3453 | | | an..3 | Language, coded | n.a. |
| | 4447 | | | an..3 | Text formatting, coded | n.a. |
| | | | | | | |
| | HAN(1) | 0 | D[6] | | | |
| | C524 | | M | | HANDLING INSTRUCTIONS | |

| 1 | 2 | 3 | 4 | 5 | 6 | 7 |
|-------|----------------|---|---|------------------|---|---|
| | 4079 | | M | an..3 | Handling instructions, coded | Default T T = Transit LLO = Loading LDI = Unloading TSP = Transit in the same port |
| | 1131 | | | | Code list qualifier | n.a. |
| | 3055 | | | | Code list responsible agency, coded | n.a. |
| | 4078 | | | | Handling instructions | n.a. |
| | C218 | | | | HAZARDOUS MATERIAL | n.a. |
| | 7419 | | | | Hazardous material class code, identification | n.a. |
| | 1131 | | | | Code list qualifier | n.a. |
| | 3055 | | | | Code list responsible agency, coded | n.a. |
| | 7418 | | | | Hazardous material class | n.a. |
| | | | | | | |
| GRP 1 | RFF (1) | 1 | C | | <i>REFERENCE</i> | Reference to the message for which the current message is a <i>replacement</i> . Mandatory if the message is a modification or a cancellation message |
| | C506 | | M | | REFERENCE | |
| | 1153 | | M | an..3 | Reference qualifier | 'ACW' for reference number to previous message |
| | 1154 | | M | an..35 (an15) | Reference number | Message reference number from BGM, TAG 1004 of the message this message replaces |

| 1 | 2 | 3 | 4 | 5 | 6 | 7 |
|-------|----------------|---|---|--------|--------------------------|---|
| | 1156 | | | an..6 | Line number | n.a. |
| | 4000 | | | an..35 | Reference version number | n.a. |
| | 1060 | | | an..6 | Revision number | n.a. |
| | | | | | | |
| GRP 1 | RFF (2) | 1 | C | | <i>REFERENCE</i> | Reference to <i>transport document</i> |
| | C506 | | M | | REFERENCE | |
| | 1153 | | M | an..3 | Reference qualifier | 'FF' for 'freight forwarder's reference number' |
| | 1154 | | M | an..35 | Reference number | Reference number of the transport document |
| | 1156 | | | an..6 | Line number | n.a. |
| | 4000 | | | an..35 | Reference version number | n.a. |
| | 1060 | | | an..6 | Revision number | n.a. |
| | | | | | | |
| GRP 1 | RFF (3) | 1 | C | | <i>REFERENCE</i> | Reference to a <i>test scenario</i> |
| | C506 | | M | | REFERENCE | |
| | 1153 | | M | an..3 | Reference qualifier | 'ADD' for test number |
| | 1154 | | M | an..35 | Reference number | Test scenario identification, which shall be known at the receiving party |
| | 1156 | | | an..6 | Line number | n.a. |
| | 4000 | | | an..35 | Reference version number | n.a. |

| 1 | 2 | 3 | 4 | 5 | 6 | 7 |
|-------|------------|---|---|----------------|---|--|
| | 1060 | | | an..6 | Revision number | n.a. |
| | | | | | | |
| GRP 2 | TDT | 1 | M | | <i>DETAILS OF TRANSPORT</i> | Specification of the means of transport, the <i>naming vessel within a convoy</i> (a single vessel without barge is also a convoy in this context) |
| | 8051 | | M | an..3 | Transport stage code qualifier | '20' for main carriage transport |
| | 8028 | | C | an..17 | Conveyance reference number | Voyage number, defined by sender of the message |
| | C220 | | M | | MODE OF TRANSPORT | |
| | 8067 | | M | an..3 | Mode of transport, coded | '8' for Inland water transport, '1' for maritime transport (see UNECE Rec. 19) |
| | 8066 | | | an..17 | Mode of transport | n.a. |
| | C228 | | M | | TRANSPORT MEANS | |
| | 8179 | | M | an..8 (an4) | Type of means of transport identification, <i>convoy type</i> | Code for ship and convoy types of means of transport from UN/CEFACT Rec. 28, see Part IV, Article 2.03(1) |
| | 8178 | | | an..17 | Type of means of transport | n.a. |
| | C040 | | | | CARRIER | n.a. |
| | 3127 | | | an..17 | Carrier identification | n.a. |
| | 1131 | | | an..3 | Code list qualifier | n.a. |
| | 3055 | | | an..3 | Code list responsible agency | n.a. |
| | 3128 | | | an..35 | Carrier name | n.a. |

| 1 | 2 | 3 | 4 | 5 | 6 | 7 |
|-----|----------------|---|---|-------------------|--|---|
| | 8101 | | | an..3 | Transit direction, coded | n.a. |
| | C401 | | | | EXCESS TRANSPORTATION INFORMATION | |
| | 8457 | | | an..3 | Excess transportation reason | n.a. |
| | 8459 | | | an..3 | Excess transportation responsibility | n.a. |
| | 7130 | | | an..17 | Customer authorisation number | n.a. |
| | C222 | | M | | TRANSPORT IDENTIFICATION | |
| | 8213 | | M | an..9 (an7..8) | ID. of means of transport identification | <i>Vessel number</i> : 7 digits for IMO indication or unique European vessel identification number (ENI) |
| | 1131 | | M | an..3 | Code list qualifier | 'IMO' for an IMO-number, see Part IV, Article 2.03(2) 'ENI' for a unique European vessel identification number, see Part IV, Article 2.03(3) |
| | 3055 | | | an..3 | Code list responsible agency | n.a. |
| | 8212 | | M | an..35 | Id. of the means of transport | <i>Name of the ship</i> ; If the name results in more than 35 positions, the name of the vessel is shortened |
| | 8453 | | M | an..3 | Nationality of means of transport | ISO two-alpha country code 3166-1, see Part IV, Article 2.03(8). If the nationality of the means of transport is not known, the 3-digit code of the country of the inspection body that issued the last vessel certificate shall be used. |
| | 8281 | | | an..3 | Transport ownership | n.a. |
| TDT | RFF (1) | 1 | M | | <i>REFERENCE</i> | Dimensions of the transport, <i>length</i> |

| 1 | 2 | 3 | 4 | 5 | 6 | 7 |
|-----|----------------|---|---|------------------|--------------------------|---|
| | C506 | | M | | REFERENCE | |
| | 1153 | | M | an..3 | Reference qualifier | 'LEN' = Length |
| | 1154 | | M | an..35 (n..5) | Reference number | Total length of the convoy in centimetres |
| | 1156 | | | an..6 | Line number | n.a. |
| | 4000 | | | an..35 | Reference version number | n.a. |
| | 1060 | | | an..6 | Revision number | n.a. |
| | | | | | | |
| TDT | RFF (2) | 1 | M | | <i>REFERENCE</i> | Dimensions of the transport, <i>width</i> |
| | C506 | | M | | REFERENCE | |
| | 1153 | | M | an..3 | Reference qualifier | 'WID' |
| | 1154 | | M | an..35 (n..4) | Reference number | Total width of the convoy in centimetres |
| | 1156 | | | an..6 | Line number | n.a. |
| | 4000 | | | an..35 | Reference version number | n.a. |
| | 1060 | | | an..6 | Revision number | n.a. |
| | | | | | | |
| TDT | RFF (3) | 1 | M | | <i>REFERENCE</i> | Dimensions of the transport, <i>draught</i> |
| | C506 | | M | | REFERENCE | |
| | 1153 | | M | an..3 | Reference qualifier | 'DRA' |

| 1 | 2 | 3 | 4 | 5 | 6 | 7 |
|-----|----------------|---|---|------------------|--------------------------|--|
| | 1154 | | M | an..35 (n..4) | Reference number | Draught of the convoy in centimetres (If due to legal restriction this data cannot be submitted, the value of this field shall be '9999') |
| | 1156 | | | an..6 | Line number | n.a. |
| | 4000 | | | an..35 | Reference version number | n.a. |
| | 1060 | | | an..6 | Revision number | n.a. |
| | | | | | | |
| TDT | RFF (4) | 1 | C | | <i>REFERENCE</i> | Dimensions of the transport, <i>height</i> |
| | C506 | | M | | REFERENCE | |
| | 1153 | | M | an..3 | Reference qualifier | 'HGT' |
| | 1154 | | M | an..35 (n..4) | Reference number | Height of the convoy above the waterline in centimetres |
| | 1156 | | | an..6 | Line number | n.a. |
| | 4000 | | | an..35 | Reference version number | n.a. |
| | 1060 | | | an..6 | Revision number | n.a. |
| | | | | | | |
| TDT | RFF (5) | 1 | M | | <i>REFERENCE</i> | Dimensions of the transport, <i>tonnage</i> |
| | C506 | | M | | REFERENCE | Reference |
| | 1153 | | M | an..3 | Reference qualifier | 'TON' |

| 1 | 2 | 3 | 4 | 5 | 6 | 7 |
|-----|----------------|---|---|------------------|--------------------------|--|
| | 1154 | | M | an..35 (n..6) | Reference number | Maximum capacity of the convoy in metric tonnes |
| | 1156 | | | an..6 | Line number | n.a. |
| | 4000 | | | an..35 | Reference version number | n.a. |
| | 1060 | | | an..6 | Revision number | n.a. |
| | | | | | | |
| TDT | RFF (6) | 1 | C | | <i>REFERENCE</i> | <i>National voyage reference, Belgium, France, Germany</i> |
| | C506 | | M | | REFERENCE | Reference |
| | 1153 | | M | an..3 | Reference qualifier | 'GNB' = Belgium 'GNF' = France 'GNG' = Germany 'GN1' = reserved |
| | 1154 | | M | an..35 | Reference number | Government reference of Belgium |
| | 1156 | | | an..6 | Line number | n.a. |
| | 4000 | | | an..35 | Reference version number | n.a. |
| | 1060 | | | an..6 | Revision number | n.a. |
| | | | | | | |
| TDT | RFF (7) | 1 | C | | <i>REFERENCE</i> | <i>LNG installation indicator</i> |
| | C506 | | M | | REFERENCE | Reference |
| | 1153 | | M | an..3 | Reference qualifier | 'LNG' |

| 1 | 2 | 3 | 4 | 5 | 6 | 7 |
|-----|----------------|---|---|--------------------|---|---|
| | 1154 | | M | an..35 (an1) | Reference number | Y = Yes |
| | 1156 | | | an..6 | Line number | n.a. |
| | 4000 | | | an..35 | Reference version number | n.a. |
| | 1060 | | | an..6 | Revision number | n.a. |
| | | | | | | |
| TDT | LOC (1) | 1 | M | | <i>PLACE/LOCATION IDENTIFICATION</i> | <i>Port of departure, the port where the transport starts</i> |
| | 3227 | | M | an..3 | Place/location qualifier | '5' place of departure |
| | C517 | | M | | LOCATION IDENTIFICATION | |
| | 3225 | | M | an..25 (an5) | Place/location identification | UNECE location code (Rec. 16), see Part IV, Article 2.03(9) |
| | 1131 | | | an..3 | Code list qualifier | n.a. |
| | 3055 | | | an..3 | Code list responsible agency | n.a. |
| | 3224 | | C | an..70 (an..17) | Place/location | Full name of the port location |
| | C519 | | C | | RELATED LOCATION ONE IDENTIFICATION | |
| | 3223 | | M | an..25 (an..5) | Related place/location one identification | Terminal code, see Part IV, Article 2.03(11) |
| | 1131 | | | an..3 | Code list qualifier | n.a. |
| | 3055 | | | an..3 | Code list responsible agency | n.a. |

| 1 | 2 | 3 | 4 | 5 | 6 | 7 |
|-----|----------------|---|-----------|-----------------|---|--|
| | 3222 | | D [Use 1] | an..70 | Related place/location one | Full name of the terminal. |
| | C553 | | C | | RELATED LOCATION TWO IDENTIFICATION | |
| | 3233 | | M | an..25 (an5) | Related place/location two identification | Fairway section code, see Part IV, Article 2.03(10) |
| | 1131 | | | an..3 | Code list qualifier | n.a. |
| | 3055 | | | an..3 | Code list responsible agency | n.a. |
| | 3232 | | C | an..70 (an..5) | Related place/location two | Fairway section hectometre |
| | 5479 | | | an..3 | Relation | n.a. |
| TDT | LOC (2) | 1 | C | | <i>PLACE/LOCATION IDENTIFICATION</i> | <i>Passage point that has already been passed by the ship. This segment and the TDT/DTM(2) segment with qualifier 186 are mandatory for passage reports.</i> |
| | 3227 | | M | an..3 | Place/location qualifier | '172' for passage point |
| | C517 | | M | | LOCATION IDENTIFICATION | |
| | 3225 | | M | an..25 (an5) | Place/location identification | UNECE location code (Rec. 16) of the passage point (lock, bridge, traffic centre), see Part IV, Article 2.03(9) |
| | 1131 | | | an..3 | Code list qualifier | n.a. |
| | 3055 | | | an..3 | Code list responsible agency | n.a. |
| | 3224 | | C | an..70 (an..17) | Place/location | Full name of the passage point |

| 1 | 2 | 3 | 4 | 5 | 6 | 7 |
|-----|----------------|---|---|----------------|---|---|
| | C519 | | C | | RELATED LOCATION ONE IDENTIFICATION | |
| | 3223 | | M | an..25 (an..5) | Related place/location one identification | Passage point code |
| | 1131 | | | an..3 | Code list qualifier | n.a. |
| | 3055 | | | an..3 | Code list responsible agency | n.a. |
| | 3222 | | | an..70 | Related place/location one | n.a. |
| | C553 | | C | | RELATED LOCATION TWO IDENTIFICATION | |
| | 3233 | | M | an..25 (an5) | Related place/location two identification | Fairway section code, see Part IV, Article 2.03(10) |
| | 1131 | | | an..3 | Code list qualifier | n.a. |
| | 3055 | | | an..3 | Code list responsible agency | n.a. |
| | 3232 | | C | an..70 (an..5) | Related place/location two | Fairway section hectometre |
| | 5479 | | | an..3 | Relation | n.a. |
| | | | | | | |
| TDT | LOC (3) | 1 | C | | <i>PLACE/LOCATION IDENTIFICATION</i> | <i>Next passage point</i> |
| | 3227 | | M | an..3 | Place/location qualifier | '61' for next port of call |
| | C517 | | M | | LOCATION IDENTIFICATION | |
| | 3225 | | M | an..25 (an5) | Place/location identification | UNECE location code (Rec. 16) of the passage point (lock, bridge, VTS centre), see Part IV, Article 2.03(9) |

| 1 | 2 | 3 | 4 | 5 | 6 | 7 |
|---|------|---|---|--------------------|---|---|
| | 1131 | | | an..3 | Code list qualifier | n.a. |
| | 3055 | | | an..3 | Code list responsible agency | n.a. |
| | 3224 | | C | an..70 (an..17) | Place/location | Full name of the passage point |
| | C519 | | C | | RELATED LOCATION ONE IDENTIFICATION | |
| | 3223 | | M | an..25 | Related place/location one identification | Passage point code |
| | 1131 | | | an..3 | Code list qualifier | n.a. |
| | 3055 | | | an..3 | Code list responsible agency | n.a. |
| | 3222 | | | an..70 | Related place/location one | n.a. |
| | C553 | | C | | RELATED LOCATION TWO IDENTIFICATION | |
| | 3233 | | M | an..25 (an5) | Related place/location two identification | Fairway section code, see Part IV, Article 2.03(10) |
| | 1131 | | | an..3 | Code list qualifier | n.a. |
| | 3055 | | | an..3 | Code list responsible agency | n.a. |
| | 3232 | | C | an..70 (an..5) | Related place/location two | Fairway section hectometre |
| | 5479 | | | an..3 | Relation | n.a. |
| | | | | | | |

| 1 | 2 | 3 | 4 | 5 | 6 | 7 |
|-----|-------------------|---|---|-------------------|---|---|
| TDT | LOC (4..8) | 1 | C | | <i>PLACE/LOCATION IDENTIFICATION</i> | <i>Further future passage points</i> (information on intended route). At most five intermediate points on the route may be given. The order of passage shall be the order within the message. |
| | 3227 | | M | an..3 | Place/location qualifier | '92' for routing |
| | C517 | | M | | LOCATION IDENTIFICATION | |
| | 3225 | | M | an..25 (an5) | Place/location identification | UNECE location code (Rec. 16) of the passage point (lock, bridge, traffic centre), see Part IV, Article 2.03(9) |
| | 1131 | | | an..3 | Code list qualifier | n.a. |
| | 3055 | | | an..3 | Code list responsible agency | n.a. |
| | 3224 | | C | an..17 | Place/location | Full name of the passage point |
| | C519 | | C | | RELATED LOCATION ONE IDENTIFICATION | |
| | 3223 | | M | an..25 (an..5) | Related place/location one identification | Passage point code |
| | 1131 | | | an..3 | Code list qualifier | n.a. |
| | 3055 | | | an..3 | Code list responsible agency | n.a. |
| | 3222 | | C | an..70 | Passage datetime | YYMMDDHHMM as '201' of DTM 2379 |
| | C553 | | C | | RELATED LOCATION TWO IDENTIFICATION | |

| 1 | 2 | 3 | 4 | 5 | 6 | 7 |
|-----|----------------|---|---|--------------------|---|--|
| | 3233 | | M | an..25 (an5) | Related place/location two identification | Fairway section code, see Part IV, Article 2.03(10) |
| | 1131 | | | an..3 | Code list qualifier | n.a. |
| | 3055 | | | an..3 | Code list responsible agency | n.a. |
| | 3232 | | C | an..70 (an..5) | Related place/location two | Fairway section hectometre |
| | 5479 | | | an..3 | Relation | n.a. |
| | | | | | | |
| TDT | LOC (9) | 1 | M | | <i>PLACE/LOCATION IDENTIFICATION</i> | <i>Port of destination.</i> This is the first port where the transport is bound. |
| | 3227 | | M | an..3 | Place/location qualifier | '153' for place of call |
| | C517 | | M | | LOCATION IDENTIFICATION | |
| | 3225 | | M | an..25 (an5) | Place/location identification | UNECE location code (Rec. 16) of the port, see Part IV, Article 2.03(9) |
| | 1131 | | | an..3 | Code list qualifier | n.a. |
| | 3055 | | | an 3 | Code list responsible agency | n.a. |
| | 3224 | | C | an..70 (an..17) | Place/location | Full name of the port location |
| | C519 | | C | | RELATED LOCATION ONE IDENTIFICATION | |
| | 3223 | | M | an..25 (an..5) | Related place/location one identification | Terminal code, see Part IV, Article 2.03(11) |

| 1 | 2 | 3 | 4 | 5 | 6 | 7 |
|------------|----------------|---|-----------|----------------|---|---|
| | 1131 | | | an..3 | Code list qualifier | n.a. |
| | 3055 | | | an..3 | Code list responsible agency | n.a. |
| | 3222 | | D [Use 1] | an..70 | Related place/location one | Full name of the terminal |
| | C553 | | C | | RELATED LOCATION TWO IDENTIFICATION | |
| | 3233 | | M | an..25 (an5) | Related place/location two identification | Fairway section code, see Part IV, Article 2.03(10) |
| | 1131 | | | an..3 | Code list qualifier | n.a. |
| | 3055 | | | an..3 | Code list responsible agency | n.a. |
| | 3232 | | C | an..70 (an..5) | Related place/location two | Fairway section hectometre |
| | 5479 | | | an..3 | Relation | n.a. |
| | | | | | | |
| TDT/LOC(1) | DTM (1) | 2 | C | | DATE/TIME/PERIOD | Departure time (estimated) |
| | C507 | | M | | DATE/TIME/PERIOD | |
| | 2005 | | M | an..3 | Date or time or period function code qualifier | '133' for departure date/time, estimated |
| | 2380 | | M | an..35 | Date or time period value | Value of departure time |
| | 2379 | | M | an..3 | Date or time or period format code | '201' for YYMMDDHHMM |
| | | | | | | |
| TDT/LOC(2) | DTM (2) | 2 | C | | DATE/TIME/PERIOD | Passage time, as recorded by the traffic centre |

| 1 | 2 | 3 | 4 | 5 | 6 | 7 |
|------------|----------------|---|---|--------|---|---|
| | C507 | | M | | DATE/TIME/PERIOD | |
| | 2005 | | M | an..3 | Date or time or period function code qualifier | '186' for departure time, actual |
| | 2380 | | M | an..35 | Date or time period value | Value of passage time: YYMMDDHHMM |
| | 2379 | | M | an..3 | Date or time or period format code | '201' for YYMMDDHHMM |
| | | | | | | |
| TDT/LOC(9) | DTM (3) | 2 | C | | DATE/TIME/PERIOD | <i>Estimated time of arrival at port of destination</i> |
| | C507 | | M | | DATE/TIME/PERIOD | |
| | 2005 | | M | an..3 | Date or time or period function code qualifier | '132' for arrival time, estimated |
| | 2380 | | M | an..35 | Date or time period value | Value of arrival time: YYMMDDHHMM |
| | 2379 | | M | an..3 | Date or time or period format code | '201' for YYMMDDHHMM |
| | | | | | | |
| GRP 3 | NAD (1) | 1 | M | | NAME and ADDRESS | name and address of <i>message sender</i> |
| | 3035 | | M | an..3 | Party function code qualifier | 'MS' for message sender |
| | C082 | | C | | PARTY IDENTIFICATION DETAILS | |
| | 3039 | | M | an..35 | Party identification | Identification code. For notifications to the Port of Rotterdam this element is mandatory. ERI fills this element with '900000000'. |
| | 1131 | | | an..3 | Code list qualifier | n.a. |
| | 3055 | | | an..3 | Code list responsible agency | n.a. |

| 1 | 2 | 3 | 4 | 5 | 6 | 7 |
|---|------|---|---|--------|--------------------------|--------------------------------------|
| | C058 | | | | NAME AND ADDRESS | n.a. |
| | 3124 | | | an..35 | Name and address line | n.a. |
| | 3124 | | | an..35 | Name and address line | n.a. |
| | 3124 | | | an..35 | Name and address line | n.a. |
| | 3124 | | | an..35 | Name and address line | n.a. |
| | 3124 | | | an..35 | Name and address line | n.a. |
| | C080 | | M | | PARTY NAME | |
| | 3036 | | M | an..35 | Party name | Sender name |
| | 3036 | | | an..35 | Party name | n.a. |
| | 3036 | | | an..35 | Party name | n.a. |
| | 3036 | | | an..35 | Party name | n.a. |
| | 3036 | | | an..35 | Party name | n.a. |
| | 3045 | | | an..3 | Party name format, coded | n.a. |
| | C059 | | C | | STREET | |
| | 3042 | | M | an..35 | Street and number/PO box | Street and number or post office box |
| | 3042 | | | an..35 | Street and number/PO box | n.a. |
| | 3042 | | | an..35 | Street and number/PO box | n.a. |
| | 3042 | | | an..35 | Street and number/PO box | n.a. |
| | 3164 | | C | an..35 | City name | City |

| 1 | 2 | 3 | 4 | 5 | 6 | 7 |
|--------------|------------|------|---|--------|---------------------------------------|---|
| | 3229 | | | an..9 | Country sub-entity identification | n.a. |
| | 3251 | | C | an..9 | Postcode identification | Postal identification code |
| | 3207 | | C | an..3 | Country | ISO 3166-1 two alpha country code, see Part IV, Article 2.03(8) |
| | | | | | | |
| GRP 4 NAD | CTA | 2 | C | | <i>CONTACT INFORMATION</i> | Sender contact details |
| | 3139 | | | an..3 | Contact function | n.a. |
| | C056 | | M | | DEPARTMENT OR EMPLOYEE DETAILS | |
| | | 3413 | | an..17 | Department or employee identification | n.a. |
| | | 3412 | M | an..35 | Department or employee | 'ERI', dummy value |
| | | | | | | |
| NAD/CTA | COM | 2 | C | | <i>COMMUNICATION CONTACT</i> | Sender communication contact details (maximum 4 times) |
| | C076 | | M | | COMMUNICATION CONTACT | |
| | | 3148 | M | an..70 | Communication number | Communication number |

| 1 | 2 | 3 | 4 | 5 | 6 | 7 |
|-----|----------------|---|---|--------|---------------------------------|---|
| | 3155 | | M | an..3 | Communication channel qualifier | 'TE' for telephone number 'FX' for fax number 'EM' for email address 'EI' for EDI mailbox number (EDI number or email address for NAD 1 is mandatory if a response in the form of an ERIRSP message is requested for. If no response is requested, the EDI number and email address is not to be used). |
| | | | | | | |
| NAD | NAD (2) | 1 | C | | <i>NAME and ADDRESS</i> | Name and address of <i>agent/invoicee</i> |
| | 3035 | | M | an..3 | Party function code qualifier | 'CG' for agent/invoice address (for VNF this segment is mandatory) |
| | C082 | | C | | PARTY IDENTIFICATION DETAILS | |
| | 3039 | | M | an..35 | Party identification | Identification code. For notifications to the Port of Rotterdam this element is mandatory. ERI fills this element with '900000000' |
| | 1131 | | | an..3 | Code list qualifier | n.a. |
| | 3055 | | | an..3 | Code list responsible agency | n.a. |
| | C058 | | | | NAME AND ADDRESS | n.a. |
| | 3124 | | | an..35 | Name and address line | n.a. |
| | 3124 | | | an..35 | Name and address line | n.a. |
| | 3124 | | | an..35 | Name and address line | n.a. |
| | 3124 | | | an..35 | Name and address line | n.a. |

| 1 | 2 | 3 | 4 | 5 | 6 | 7 |
|---|------|---|---|--------------------|-----------------------------------|---|
| | 3124 | | | an..35 | Name and address line | n.a. |
| | C080 | | M | | PARTY NAME | |
| | 3036 | | M | an..35 | Party name | Sender name. |
| | 3036 | | C | an..35 (an..25) | Invoice number | Invoice number of the agent/invoicee |
| | 3036 | | | an..35 | Party name | n.a. |
| | 3036 | | | an..35 | Party name | n.a. |
| | 3036 | | | an..35 | Party name | n.a. |
| | 3045 | | | an..3 | Party name format, coded | n.a. |
| | C059 | | C | | STREET | Street |
| | 3042 | | M | an..35 | Street and number/PO box | Address (street name + number or post office box number) |
| | 3042 | | | an..35 | Street and number/PO box | n.a. |
| | 3042 | | | an..35 | Street and number/PO box | n.a. |
| | 3042 | | | an..35 | Street and number/PO box | n.a. |
| | 3164 | | C | an..35 | City name | City |
| | 3229 | | | an..9 | Country sub-entity identification | n.a. |
| | 3251 | | C | an..9 | Postcode identification | Postal code |
| | 3207 | | C | an..3 | Country | ISO 3166-1 two alpha country code, see Part IV, Article 2.03(8) |

| 1 | 2 | 3 | 4 | 5 | 6 | 7 |
|-------|----------------|---|---|--------------------|--|---|
| GRP 5 | EQD (1) | 1 | M | | <i>EQUIPMENT DETAILS</i> | Specification of the VESSELS within the convoy (for each vessel 1 segment, also the main vessel), <i>propulsed vessel</i> |
| | 8053 | | M | an..3 | Equipment type code qualifier | 'BRY' for vessel participating in the propulsion |
| | C237 | | M | | EQUIPMENT IDENTIFICATION | |
| | 8260 | | M | an..17 (an7..8) | Equipment identification number | <i>Vessel number</i> : 7 digits for IMO indication or 8 digits for unique European vessel identification number (ENI) |
| | 1131 | | M | an..3 | Code list qualifier | 'IMO' for an IMO number, see Part IV, Article 2.03(2) 'ENI' for a unique European vessel identification number, see Part IV, Article 2.03(3) |
| | 3055 | | | an..3 | Code list responsible agency | n.a. |
| | 3207 | | | an..3 | Country | n.a. |
| | C224 | | M | | EQUIPMENT SIZE AND TYPE | |
| | 8155 | | M | an..10 (an..4) | Equipment size and type identification, <i>vessel type</i> | Code for ship and convoy types of means of transport from UN/CEFACT Rec. 28, see Part IV, Article 2.03(1) |
| | 1131 | | | an..3 | Code list qualifier | n.a. |
| | 3055 | | | an..3 | Code list responsible agency | n.a. |
| | 8154 | | M | an..35 | Equipment size and type | <i>Name of the vessel</i> . If the name results in more than 35 positions, the name of the vessel is shortened |
| | 8077 | | | an..3 | Equipment supplier | n.a. |

| 1 | 2 | 3 | 4 | 5 | 6 | 7 |
|-----|-----------------------------|---|---|--------------------|--|---|
| | 8249 | | | an..3 | Equipment status | n.a. |
| | 8169 | | | an..3 | Full/empty indicator | n.a. |
| | | | | | | |
| EQD | EQD (V) (2 - 15) | 1 | C | | <i>EQUIPMENT DETAILS</i> | Specification of the VESSELS within the convoy (for each vessel 1 segment, also the main vessel) <i>not propelled vessels</i> |
| | 8053 | | M | an..3 | Equipment type code qualifier | 'BRN' for vessel not participating in the propulsion |
| | C237 | | M | | EQUIPMENT IDENTIFICATION | |
| | 8260 | | M | an..17 (an7..8) | Equipment identification number | <i>Vessel number</i> : 7 digits for IMO indication, 8 digits for unique European vessel identification number |
| | 1131 | | M | an..3 | Code list qualifier | 'IMO' for an IMO number, see Part IV, Article 2.03(2) 'ENI' for a unique European vessel identification number, see Part IV, Article 2.03(3) |
| | 3055 | | | an..3 | Code list responsible agency | n.a. |
| | 3207 | | | an..3 | Country | n.a. |
| | C224 | | M | | EQUIPMENT SIZE AND TYPE | |
| | 8155 | | M | an..10 (an..4) | Equipment size and type identification, <i>vessel type</i> | Code for ship and convoy types of means of transport from UN/CEFACT Rec. 28, see Part IV, Article 2.03(1) |
| | 1131 | | | an..3 | Code list qualifier | n.a. |
| | 3055 | | | an..3 | Code list responsible agency | n.a. |

| 1 | 2 | 3 | 4 | 5 | 6 | 7 |
|-----|----------------|---|---|----------------|--------------------------------------|---|
| | 8154 | | M | an..35 | Equipment size and type | <i>Name of the vessel.</i> If the name results in more than 35 positions, the name of the vessel is shortened |
| | 8077 | | | an..3 | Equipment supplier | n.a. |
| | 8249 | | | an..3 | Equipment status | n.a. |
| | 8169 | | | an..3 | Full/empty indicator | n.a. |
| | | | | | | |
| EQD | MEA (1) | 1 | M | | <i>MEASUREMENTS</i> | <i>Vessel length</i> |
| | 6311 | | M | an..3 | Measurement purpose qualifier | 'DIM' for dimension |
| | C502 | | | | <i>MEASUREMENT DETAILS</i> | |
| | 6313 | | M | an..3 | Property measured | 'LEN' for length |
| | 6321 | | | an..3 | Measurement significance | n.a. |
| | 6155 | | | an..17 | Measurement attribute identification | n.a. |
| | 6154 | | | an..70 | Measurement attribute | n.a. |
| | C174 | | M | | <i>VALUE/RANGE</i> | |
| | 6411 | | M | an..3 | Measurement unit qualifier | 'CMT' for centimetre (UNECE Rec. 20, Annex 3. Common code) |
| | 6314 | | M | an..18 (n5) | Measurement value | Length |
| | 6162 | | | n..18 | Range minimum | n.a. |
| | 6152 | | | n..18 | Range maximum | n.a. |

| 1 | 2 | 3 | 4 | 5 | 6 | 7 |
|-----|----------------|---|---|----------------|--------------------------------------|--|
| | 6432 | | | n..2 | Significant digits | n.a. |
| | 7383 | | | an..3 | Surface/layer indicator | n.a. |
| | | | | | | |
| EQD | MEA (2) | 1 | M | | <i>MEASUREMENTS</i> | <i>Vessel width</i> |
| | 6311 | | M | an..3 | Measurement purpose code qualifier | 'DIM' for dimension |
| | C502 | | | | MEASUREMENT DETAILS | |
| | 6313 | | M | an..3 | Property measured | 'WID' for width |
| | 6321 | | | an..3 | Measurement significance | n.a. |
| | 6155 | | | an..17 | Measurement attribute identification | n.a. |
| | 6154 | | | an..70 | Measurement attribute | n.a. |
| | C174 | | M | | VALUE/RANGE | |
| | 6411 | | M | an..3 | Measurement unit qualifier | 'CMT' for centimetre (UNECE Rec. 20, Annex 3: Common code) |
| | 6314 | | M | an..18 (n4) | Measurement value | Width |
| | 6162 | | | n..18 | Range minimum | n.a. |
| | 6152 | | | n..18 | Range maximum | n.a. |
| | 6432 | | | n..2 | Significant digits | n.a. |
| | 7383 | | | an..3 | Surface/layer indicator | n.a. |
| | | | | | | |

| 1 | 2 | 3 | 4 | 5 | 6 | 7 |
|-----|----------------|---|---|----------------|--------------------------------------|--|
| EQD | MEA (3) | 1 | M | | <i>MEASUREMENTS</i> | <i>Vessel draught</i> |
| | 6311 | | M | an..3 | Measurement purpose code qualifier | 'DIM' for dimension |
| | C502 | | M | | MEASUREMENT DETAILS | Size details |
| | 6313 | | M | an..3 | Property measured | 'DRA' for draught |
| | 6321 | | | an..3 | Measurement significance | n.a. |
| | 6155 | | | an..17 | Measurement attribute identification | n.a. |
| | 6154 | | | an..70 | Measurement attribute | n.a. |
| | C174 | | M | | VALUE/RANGE | |
| | 6411 | | M | an..3 | Measurement unit qualifier | 'CMT' for centimetre (UNECE Rec. 20, Common code) |
| | 6314 | | M | an..18 (n4) | Measurement value | Draught of the vessel in centimetres (If due to legal restriction this data cannot be submitted, the value of this field shall be '9999') |
| | 6162 | | | n..18 | Range minimum | n.a. |
| | 6152 | | | n..18 | Range maximum | n.a. |
| | 6432 | | | n..2 | Significant digits | n.a. |
| | 7383 | | | an..3 | Surface/layer indicator | n.a. |
| EQD | MEA (4) | 2 | C | | <i>MEASUREMENTS</i> | <i>Vessel tonnage</i> |
| | 6311 | | M | an..3 | Measurement purpose code qualifier | 'VOL' for volume |

| 1 | 2 | 3 | 4 | 5 | 6 | 7 |
|-------|-----------------------|---|----------|----------------|--------------------------------------|---|
| | C502 | | M | | MEASUREMENT DETAILS | Size details |
| | 6313 | | M | an..3 | Property measured | 'AAM' for gross tonnage |
| | 6321 | | | an..3 | Measurement significance | n.a. |
| | 6155 | | | an..17 | Measurement attribute identification | n.a. |
| | 6154 | | | an..70 | Measurement attribute | n.a. |
| | C174 | | M | | VALUE/RANGE | |
| | 6411 | | M | an..3 | Measurement unit qualifier | 'TNE' for metric ton (UNECE Rec. 20, Common code) |
| | 6314 | | M | an..18 (n6) | Measurement value | Tonnage (capacity) |
| | 6162 | | | n..18 | Range minimum | n.a. |
| | 6152 | | | n..18 | Range maximum | n.a. |
| | 6432 | | | n..2 | Significant digits | n.a. |
| | 7383 | | | an..3 | Surface/layer indicator | n.a. |
| | | | | | | |
| GRP 5 | EQD (1-15) | 1 | D[Use 2] | | <i>EQUIPMENT DETAILS</i> | Specification of the number of <i>CONTAINERS</i> |
| | 8053 | | M | an..3 | Equipment type code qualifier | 'CN' for container |
| | C237 | | | | EQUIPMENT IDENTIFICATION | |
| | 8260 | | | an..17 | Equipment identification number | n.a. |
| | 1131 | | | an..3 | Code list qualifier | n.a. |

| 1 | 2 | 3 | 4 | 5 | 6 | 7 |
|-----|----------------|---|---|-----------------|--|---|
| | 3055 | | | an..3 | Code list responsible agency | n.a. |
| | 3207 | | | an..3 | Country | n.a. |
| | C224 | | M | | EQUIPMENT SIZE AND TYPE | |
| | 8155 | | M | an..10 (an5) | Equipment size and type identification | Container <i>range</i> : 'RNG20' for containers having a length between 20 and 29 feet 'RNG30' for containers having a length between 30 and 39 feet 'RNG40' for containers having a length of 40 feet or more |
| | 1131 | | | an..3 | Code list qualifier | n.a. |
| | 3055 | | | an..3 | Code list responsible agency | n.a. |
| | 8154 | | | an..35 | Equipment size and type | n.a. |
| | 8077 | | | an..3 | Equipment supplier | n.a. |
| | 8249 | | | an..3 | Equipment status | n.a. |
| | 8169 | | M | an..3 | Full/empty indicator | Container <i>status</i> : '5' for loaded, '4' for empty, '6' for no volume available |
| | | | | | | |
| EQD | MEA (5) | 1 | M | EQD(2) | <i>MEASUREMENTS</i> | Specification of the <i>number of containers</i> |

| 1 | 2 | 3 | 4 | 5 | 6 | 7 |
|-------|------------|---|---|-------------------|--------------------------------------|---|
| | 6311 | | M | an..3 (an2) | Measurement purpose qualifier | 'NR' for number |
| | C502 | | | | MEASUREMENT DETAILS | n.a. |
| | 6313 | | | an..3 | Property measured | n.a. |
| | 6321 | | | an..3 | Measurement significance | n.a. |
| | 6155 | | | an..17 | Measurement attribute identification | n.a. |
| | 6154 | | | an..70 | Measurement attribute | n.a. |
| | C174 | | M | | VALUE/RANGE | |
| | 6411 | | M | an..3 | Measurement unit qualifier | 'NUM' for number (see UNECE Rec. 20, common code) |
| | 6314 | | M | an..18 (n1..4) | Measurement value | Number of containers of the given type and status. |
| | 6162 | | | n..18 | Range minimum | n.a. |
| | 6152 | | | n..18 | Range maximum | n.a. |
| | 6432 | | | n..2 | Significant digits | n.a. |
| | 7383 | | | an..3 | Surface/layer indicator | n.a. |
| | | | | | | |
| GRP 6 | CNI | 1 | M | | <i>CONSIGNMENT INFORMATION</i> | <i>Consignment</i> (similar source/destination) specification of the transported cargo |
| | 1490 | | M | n..4 | Consolidation item number | Sequence number of the consignment. For modifications, the same sequence number is to be used |

| 1 | 2 | 3 | 4 | 5 | 6 | 7 |
|-----|--------|---|------|--------|-------------------------------------|--|
| | C503 | | | | DOCUMENT/MESSAGE DETAILS | n.a. |
| | 1004 | | | an..35 | Document/message number | n.a. |
| | 1373 | | | an..3 | Document/message status, coded | n.a. |
| | 1366 | | | an..70 | Document/message source | n.a. |
| | 3453 | | | an..3 | Language, coded | n.a. |
| | 1056 | | | an..9 | Version | n.a. |
| | 1060 | | | an..6 | Revision number | n.a. |
| | 1312 | | | n..4 | Consignment load sequence number | n.a. |
| | | | | | | |
| CNI | HAN(1) | 1 | D[1] | | | |
| | C524 | | M | | HANDLING INSTRUCTIONS | |
| | 4079 | | M | | Handling instructions, coded | Default T T = Transit LLO = Loading LDI = Unloading TSP = Transit in the same port |
| | 1131 | | | | Code list qualifier | n.a. |
| | 3055 | | | | Code list responsible agency, coded | n.a. |
| | 4078 | | | | Handling instructions | n.a. |
| | C218 | | | | HAZARDOUS MATERIAL | n.a. |

| 1 | 2 | 3 | 4 | 5 | 6 | 7 |
|-----|----------------|---|---|--------|--|--|
| | 7419 | | | | Hazardous material class code, identification | n.a. |
| | 1131 | | | | Code list qualifier | n.a. |
| | 3055 | | | | Code list responsible agency, coded | n.a. |
| | 7418 | | | | Hazardous material class | n.a. |
| | | | | | | |
| CNI | DTM (1) | 1 | C | | <i>DATE/TIME/PERIOD</i> | Estimated <i>arrival time</i> at the discharge place |
| | C507 | | M | | <i>DATE/TIME/PERIOD</i> | |
| | 2005 | | M | an..3 | Date or time or period function code qualifier | '132' for arrival time, estimated |
| | 2380 | | M | an..35 | Date or time period value | Value of arrival time: YYMMDDHHMM |
| | 2379 | | M | an..3 | Date or time or period format code | '201' for YYMMDDHHMM |
| | | | | | | |
| CNI | DTM (2) | 1 | C | | <i>DATE/TIME/PERIOD</i> | Estimated <i>departure time</i> from the loading place |
| | C507 | | M | | <i>DATE/TIME/PERIOD</i> | |
| | 2005 | | M | an..3 | Date or time or period function code qualifier | '133' for departure time, estimated |
| | 2380 | | M | an..35 | Date or time period value | Time: YYMMDDHHMM |
| | 2379 | | M | an..3 | Date or time or period format code | '201' |
| | | | | | | |

| 1 | 2 | 3 | 4 | 5 | 6 | 7 |
|-----|----------------|---|-----------|--------------------|---|---|
| CNI | LOC (1) | 1 | C | | <i>PLACE/LOCATION IDENTIFICATION</i> | Specification of the <i>loading place</i> of the cargo |
| | 3227 | | M | an..3 | Place/location qualifier | '9' for place/port of loading |
| | C517 | | M | | LOCATION IDENTIFICATION | |
| | 3225 | | M | an..25 (an5) | Place/location identification | UNECE location code (Rec. 16), of the loading place, see Part IV, Article 2.03(9) |
| | 1131 | | | an..3 | Code list qualifier | n.a. |
| | 3055 | | | an..3 | Code list responsible agency | n.a. |
| | 3224 | | C | an..70 (an..17) | Place/location | Full name of the port location |
| | C519 | | C | | RELATED LOCATION ONE IDENTIFICATION | |
| | 3223 | | M | an..25 (an..5) | Related place/location one identification | Terminal code, see Part IV, Article 2.03(11) |
| | 1131 | | | an..3 | Code list qualifier | n.a. |
| | 3055 | | | an..3 | Code list responsible agency | n.a. |
| | 3222 | | D [Use 1] | an..70 (an..17) | Related place/location one | Full name of the terminal |
| | C553 | | C | | RELATED LOCATION TWO IDENTIFICATION | |
| | 3233 | | M | an..25 (an5) | Related place/location two identification | Fairway section code, see Part IV, Article 2.03(10) |
| | 1131 | | | an..3 | Code list qualifier | n.a. |

| 1 | 2 | 3 | 4 | 5 | 6 | 7 |
|-----|----------------|---|-------|--------------------|---|---|
| | 3055 | | | an..3 | Code list responsible agency | n.a. |
| | 3232 | | C | an..70 (an..5) | Related place/location two | Fairway section hectometre |
| | 5479 | | | an..3 | Relation | n.a. |
| | | | | | | |
| CNI | LOC (2) | 1 | C | | <i>PLACE/LOCATION IDENTIFICATION</i> | Specification of the <i>discharge place</i> of the cargo |
| | 3227 | | M | an..3 | Place/location qualifier | '11' for place/port of discharge |
| | C517 | | M | | LOCATION IDENTIFICATION | |
| | 3225 | | M | an..25 (an5) | Place/location identification | UNECE location code (Rec. 16), see Part IV, Article 2.03(9) |
| | 1131 | | | an..3 | Code list qualifier | n.a. |
| | 3055 | | | an..3 | Code list responsible agency | n.a. |
| | 3224 | | C | an..70 (an..17) | Place/location | Full name of the port |
| | C519 | | C | | RELATED LOCATION ONE IDENTIFICATION | |
| | 3223 | | M | an..25 (an..5) | Related place/location one identification | Terminal code, see Part IV, Article 2.03(11) |
| | 1131 | | | an..3 | Code list qualifier | n.a. |
| | 3055 | | | an..3 | Code list responsible agency | n.a. |
| | 3222 | | D [1] | an..70 (an..17) | Related place/location one | Full name of terminal |

| 1 | 2 | 3 | 4 | 5 | 6 | 7 |
|------------------|----------------|---|---|-----------------|---|---|
| | C553 | | C | | RELATED LOCATION TWO IDENTIFICATION | |
| | 3233 | | M | an..25 (an5) | Related place/location two identification | Fairway section code, see Part IV, Article 2.03(10) |
| | 1131 | | | an..3 | Code list qualifier | n.a. |
| | 3055 | | | an..3 | Code list responsible agency | n.a. |
| | 3232 | | C | an..70 (an..5) | Related place/location two | Fairway section hectometre |
| | 5479 | | | an..3 | Relation | n.a. |
| | | | | | | |
| GRP 8 CNI/NAD | NAD (1) | 2 | C | | <i>NAME AND ADDRESS</i> | <i>Cargo sender name</i> |
| | 3035 | | M | an..3 | Party function code qualifier | 'SF for ship from |
| | C082 | | C | | PARTY IDENTIFICATION DETAILS | |
| | 3039 | | M | an..35 (an..25) | Party identifier | EDI number of cargo sender |
| | 1131 | | | an..3 | Code list qualifier | n.a. |
| | 3055 | | | an..3 | Code list responsible agency | n.a. |
| | C058 | | M | | NAME AND ADDRESS | |
| | 3124 | | M | an..35 | Name and address line | Name of the Sender |
| | 3124 | | | an..35 | Name and address line | n.a. |

| 1 | 2 | 3 | 4 | 5 | 6 | 7 |
|---|------|---|---|--------------------|--------------------------------------|--|
| | 3124 | | | an..35 | Name and address line | n.a. |
| | 3124 | | | an..35 | Name and address line | n.a. |
| | 3124 | | | an..35 | Name and address line | n.a. |
| | C080 | | M | | PARTY NAME | |
| | 3036 | | M | an..35 | Party name | Ship from name |
| | 3036 | | C | an..35 (an..25) | Party name | Invoice number |
| | 3036 | | | an..35 | Party name | n.a. |
| | 3036 | | | an..35 | Party name | n.a. |
| | 3036 | | | an..35 | Party name | n.a. |
| | 3045 | | | an..3 | Party name format, coded | n.a. |
| | C059 | | O | | STREET | Street |
| | 3042 | | | an..35 | Street and number or post office box | Address (street name and number or post office box number) |
| | 3042 | | | an..35 | Street and number/PO box | n.a. |
| | 3042 | | | an..35 | Street and number/PO box | n.a. |
| | 3042 | | | an..35 | Street and number/PO box | n.a. |
| | 3164 | | C | an..35 | City name | City |
| | 3229 | | | an..9 | Country sub-entity identification | n.a. |
| | 3251 | | C | an..9 | Postcode identification | Postal Code |

| 1 | 2 | 3 | 4 | 5 | 6 | 7 |
|---------|----------------|---|---|--------------------|-------------------------------|---|
| | 3207 | | C | an..3 | Country | ISO 3166-1 two alpha country code, see Part IV, Article 2.03(8) |
| | | | | | | |
| CNI/NAD | NAD (2) | 2 | C | | NAME AND ADDRESS | <i>Cargo receiver name</i> |
| | 3035 | | M | an..3 | Party function code qualifier | 'ST' for ship to |
| | C082 | | M | | PARTY IDENTIFICATION DETAILS | |
| | 3039 | | M | an..35 (an..25) | Party identification | EDI number of receiver of cargo |
| | 1131 | | | an..3 | Code list qualifier | n.a. |
| | 3055 | | | an..3 | Code list responsible agency | n.a. |
| | C058 | | M | | NAME AND ADDRESS | |
| | 3124 | | M | an..35 | Name and address line | Name of the recipient. |
| | 3124 | | | an..35 | Name and address line | n.a. |
| | 3124 | | | an..35 | Name and address line | n.a. |
| | 3124 | | | an..35 | Name and address line | n.a. |
| | 3124 | | | an..35 | Name and address line | n.a. |
| | C080 | | M | | PARTY NAME | |
| | 3036 | | M | an..35 | Party name | Ship to name |
| | 3036 | | C | an..35 (an..25) | Party name | Invoice number |

| 1 | 2 | 3 | 4 | 5 | 6 | 7 |
|-----|--------------------|---|---|--------|-----------------------------------|---|
| | 3036 | | | an..35 | Party name | n.a. |
| | 3036 | | | an..35 | Party name | n.a. |
| | 3036 | | | an..35 | Party name | n.a. |
| | 3045 | | | an..3 | Party name format, coded | n.a. |
| | C059 | | | | STREET | Street |
| | 3042 | | | an..35 | Street and number/PO box | Address (street name and number or post office box number) |
| | 3042 | | | an..35 | Street and number/PO box | n.a. |
| | 3042 | | | an..35 | Street and number/PO box | n.a. |
| | 3042 | | | an..35 | Street and number/PO box | n.a. |
| | 3164 | | M | an..35 | City name | City |
| | 3229 | | | an..9 | Country sub-entity identification | n.a. |
| | 3251 | | | an..9 | Postcode identification | Postal Code |
| | 3207 | | | an..3 | Country | ISO 3166-1 two alpha country code, see Part IV, Article 2.03(8) |
| | | | | | | |
| CNI | GID (1..99) | 2 | M | | <i>GOODS ITEM DETAILS</i> | per vessel and per good a new GID segment |
| | 1496 | | M | n..5 | Goods item number | Sequence number of the good within a consignment. Unique within the CNI group |
| | C213 | | C | | NUMBER AND TYPE OF PACKAGES | |

| 1 | 2 | 3 | 4 | 5 | 6 | 7 |
|---|------|---|---|----------------|--------------------------------------|---|
| | 7224 | | C | n..8 | Number of packages | For containers and tanks the default value is '1' |
| | 7065 | | C | an..17 | Type of packages identification | see Part IV, Article 2.03(14) |
| | 1131 | | | an..3 | Code list qualifier | n.a. |
| | 3055 | | | an..3 | Code list responsible agency | n.a. |
| | 7064 | | | an..35 | Type of packages | n.a. |
| | 7233 | | | an..3 | Packaging related information, coded | n.a. |
| | C213 | | | | NUMBER AND TYPE OF PACKAGES | n.a. |
| | 7224 | | | n..8 | Number of packages | n.a. |
| | 7065 | | | an..17 | Type of packages identification | n.a. |
| | 1131 | | | an..3 | Code list qualifier | n.a. |
| | 3055 | | | an..3 | Code list responsible agency | n.a. |
| | 7064 | | | an..35 | Type of packages | n.a. |
| | 7233 | | | an..3 | Packaging related information | n.a. |
| | C213 | | C | | NUMBER AND TYPE OF PACKAGES | |
| | 7224 | | M | n..8 | Number of packages | Number of inner <i>packages</i> |
| | 7065 | | M | an..17 (a2) | Type of packages identification | UNECE recommendation No 21, see Part IV, Article 2.03(14) |
| | 1131 | | | an..3 | Code list qualifier | n.a. |
| | 3055 | | | an..3 | Code list responsible agency | n.a. |

| 1 | 2 | 3 | 4 | 5 | 6 | 7 |
|-------------------|----------------|---|---|--------------------|-------------------------------|---|
| | 7064 | | | an..35 | Type of packages | n.a. |
| | 7233 | | | an..3 | Packaging related information | n.a. |
| | | | | | | |
| GRP 10 CNI/GID | FTX (1) | 2 | C | | <i>FREE TEXT</i> | <i>Extra goods information</i> |
| | 4451 | | M | an..3 | Text subject code qualifier | 'ACB' for additional information |
| | 4453 | | | an..3 | Free text function code | n.a. |
| | C107 | | | | TEXT REFERENCE | |
| | 4441 | | | an..17 | Free text identification | n.a. |
| | 1131 | | | an..3 | Code list qualifier | n.a. |
| | 3055 | | | an..3 | Code list responsible agency | n.a. |
| | C108 | | M | | TEXT LITERAL | |
| | 4440 | | M | an..70 (an1) | Free text | type of good: 'D' for Dangerous 'N' for Non-dangerous |
| | 4440 | | C | an..70 (n6..10) | Free text | <i>HS code</i> , may be left blank if unknown and/good is dangerous, see (2)(f) of this Annex |
| | 4440 | | C | an..70 (a..4) | Free text | Customs status: 'C' = Union goods 'F' = Union goods from non-fiscal area 'N' = All other goods |

| 1 | 2 | 3 | 4 | 5 | 6 | 7 |
|---------|----------------|---|-----------|--------------------|------------------------------|--|
| | 4440 | | C | an..70 (an..35) | Free text | Customs document reference number if any |
| | 4440 | | C | an..70 (an1) | Free text | Overseas destination 'Y' = with overseas destination 'N' = without an overseas destination |
| | 3453 | | | an..3 | Language | n.a. |
| | 4447 | | | an..3 | Text formatting | n.a. |
| | | | | | | |
| CNI/GID | FTX (2) | 3 | C | | <i>FREE TEXT</i> | <i>Goods description of non-dangerous cargo</i> |
| | 4451 | | M | an..3 | Text subject code qualifier | 'AAA' for goods description |
| | 4453 | | | an..3 | Free text function code | n.a. |
| | C107 | | | | TEXT REFERENCE | n.a. |
| | 4441 | | | an..17 | Free text identification | n.a. |
| | 1131 | | | an..3 | Code list qualifier | n.a. |
| | 3055 | | | an..3 | Code list responsible agency | n.a. |
| | C108 | | M | | TEXT LITERAL | |
| | 4440 | | M | an..70 | Free text | Goods name of the non-dangerous cargo |
| | 4440 | | | | | n.a. |
| | 4440 | | D [Use 3] | an..70 (n6..10) | Free text | <i>HS code of the non-dangerous cargo, see Part IV, Article 2.03(4)</i> |

| 1 | 2 | 3 | 4 | 5 | 6 | 7 |
|-------------------|--------------------|---|-----------|--------------------|---------------------------------|---|
| | 4440 | | D [Use 3] | an..70 (n4) | Free text | NST code of the non-dangerous cargo, see Part IV, Article 2.03(5) |
| | 4440 | | | an..70 | Free text | n.a. |
| | 3453 | | | an..3 | Language, coded | n.a. |
| | 4447 | | | an..3 | Text formatting | n.a. |
| | | | | | | |
| GRP 11 CNI/GID | SGP (1..99) | 3 | C | | SPLIT GOODS PLACEMENT | <i>Specification of the location of the non-dangerous cargo within the means of transport</i> |
| | C237 | | M | | EQUIPMENT IDENTIFICATION | |
| | 8260 | | M | an..17 (an7..8) | Equipment identification number | <i>Ship number: 7 digits for IMO indication, 8 digits for unique European vessel identification number (ENI)</i> |
| | 1131 | | M | an..3 | Code list qualifier | 'IMO' for an IMO number, see Part IV, Article 2.03(2) 'ENI' for a unique European vessel identification number, see Part IV, Article 2.03(3) |
| | 3055 | | | an..3 | Code list responsible agency | n.a. |
| | 3207 | | | an..3 | Country | n.a. |
| | 7224 | | | n..8 | Number of packages | n.a. |
| | | | | | | |
| CNI/GID/SGP | MEA | 3 | M | | MEASUREMENTS | <i>Specification of the weight of a non-dangerous good on board the vessel</i> |
| | 6311 | | M | an..3 | Measurement purpose qualifier | 'WT' for weights |

| 1 | 2 | 3 | 4 | 5 | 6 | 7 |
|-------------|------------|---|---|----------------|--------------------------------------|---|
| | C502 | | M | | MEASUREMENT DETAILS | |
| | 6313 | | M | an..3 | Property measured | 'AAL' for net weight including normal packing |
| | 6321 | | | an..3 | Measurement significance | n.a. |
| | 6155 | | | an..17 | Measurement attribute identification | n.a. |
| | 6154 | | | an..70 | Measurement attribute | n.a. |
| | C174 | | M | | VALUE/RANGE | |
| | 6411 | | M | an..3 | Measurement unit qualifier | 'KGM' for kilogram (UNECE Rec. 20) |
| | 6314 | | M | an..18 (n9) | Measurement value | weight in kilogram |
| | 6162 | | | n..18 | Range minimum | n.a. |
| | 6152 | | | n..18 | Range maximum | n.a. |
| | 6432 | | | an..2 | Significant digits | n.a. |
| | 7383 | | | an..3 | Surface/layer indicator | n.a. |
| | | | | | | |
| CNI/GID/SGP | MEA | 3 | C | | <i>MEASUREMENTS</i> | <i>Specification of the tonnage of a non-dangerous good on board the vessel</i> |
| | 6311 | | M | an..3 | Measurement purpose qualifier | 'VOL' for volume |
| | C502 | | M | | MEASUREMENT DETAILS | |
| | 6313 | | M | an..3 | Property measured | 'AAX' The observed volume after adjustment for factors such as temperature or gravity |

| 1 | 2 | 3 | 4 | 5 | 6 | 7 |
|-------------------|------------|---|----------|----------------|---|--|
| | 6321 | | | an..3 | Measurement significance | n.a. |
| | 6155 | | | an..17 | Measurement attribute identification | n.a. |
| | 6154 | | | an..70 | Measurement attribute | n.a. |
| | C174 | | M | | VALUE/RANGE | |
| | 6411 | | M | an..3 | Measurement unit qualifier | 'TNE' for metric ton (UNECE Rec. 20) |
| | 6314 | | M | an..18 (n9) | Measurement value | Tonnage |
| | 6162 | | | n..18 | Range minimum | n.a. |
| | 6152 | | | n..18 | Range maximum | n.a. |
| | 6432 | | | an..2 | Significant digits | n.a. |
| | 7383 | | | an..3 | Surface/layer indicator | n.a. |
| | | | | | | |
| GRP 12 CNI/GID | DGS | 3 | M | | <i>DANGEROUS GOODS</i> | <i>Dangerous goods identification</i> |
| | 8273 | | M | an..3 | Dangerous goods regulations | 'ADN' for inland vessels (UNECE ADN Code) 'IMD' for sea going vessels (IMO IMDG code) |
| | C205 | | M | | HAZARD CODE | |
| | 8351 | | D[USE 5] | an..7 | Hazard code identification | <i>ADN Classification (Column 3a), or IMDG code, see Part IV, Article 2.03(7) or 2.03(6)</i> |
| | 8078 | | D[USE 5] | an..7 | Additional hazard classification identifier | <i>ADN Classification (Column 3b), see Part IV, Article 2.03(7)</i> |

| 1 | 2 | 3 | 4 | 5 | 6 | 7 |
|---|------|---|---|--------|--|---|
| | 8092 | | | an..10 | Hazard code version number | n.a. |
| | C234 | | M | | UNDG INFORMATION | |
| | 7124 | | M | n4 | UNDG number | UN number or identification number (Column 1) (UNNR code), see Part IV, 2.03(7), or IMDG number, see 2.03(6) |
| | 7088 | | | an..8 | Dangerous goods flashpoint | n.a. |
| | C223 | | C | | DANGEROUS GOODS SHIPMENT FLASHPOINT | |
| | 7106 | | M | n..3 | Shipment flashpoint | <i>Flashpoint</i> of the good transported |
| | 6411 | | M | an..3 | Measure unit qualifier | 'CEL' for Celsius 'FAH' for Fahrenheit |
| | 8339 | | C | an..3 | Packing group | Packing group (column 4) '1' for great danger '2' for medium danger '3' for minor danger Empty if not available |
| | 8364 | | C | an..6 | EMS number | Emergency procedures |
| | 8410 | | C | an..4 | MFAG number | Medical first aid guide |
| | 8126 | | | an..10 | TREM card number | n.a. |
| | C235 | | C | | HAZARD IDENTIFICATION PLACARD DETAILS | Placards mandatory for dangerous goods on dry cargo vessels |
| | 8158 | | M | an..4 | Hazard identification number, upper part | see ADN |

| 1 | 2 | 3 | 4 | 5 | 6 | 7 |
|-------------|----------------|---|----------|--------|---|--|
| | 8186 | | M | an..4 | Substance identification number, lower part | see ADN |
| | C236 | | D[USE 5] | | DANGEROUS GOODS LABEL | Dangerous labels. |
| | 8246 | | M | an..4 | Dangerous goods label marking | ADN Labels, (Column 5) |
| | 8246 | | | an..4 | Dangerous goods label marking | n.a. |
| | 8246 | | | an..4 | Dangerous goods label marking | n.a. |
| | 8255 | | | an..3 | Packing instruction | n.a. |
| | 8325 | | | an..3 | Category of means of transport | n.a. |
| | 8211 | | | an..3 | Permission for transport | n.a. |
| | | | | | | |
| CNI/GID/DGS | FTX (1) | 3 | M | | <i>FREE TEXT</i> | <i>Dangerous good description</i> |
| | 4451 | | M | an..3 | Text subject code qualifier | 'AAD' for dangerous goods, proper shipping name and technical name |
| | 4453 | | | an..3 | Free text function code | n.a. |
| | C107 | | D[USE 5] | | TEXT REFERENCE | <i>GOODS HAZARD LIMITED QUANTITIES INDICATOR</i> |
| | 4441 | | M | an..17 | Free text identification | <i>'TLQ' Transport of dangerous goods in limited quantities</i> |
| | 1131 | | | an..3 | Code list qualifier | n.a. |
| | 3055 | | | an..3 | Code list responsible agency | n.a. |
| | C108 | | M | | TEXT LITERAL | |

| 1 | 2 | 3 | 4 | 5 | 6 | 7 |
|-------------|------------|---|----------|--------|---------------------------------|--|
| | 4440 | | M | an..70 | Free text | Name of dangerous good (proper shipping name) <i>Proper shipping name, supplemented as necessary with the correct technical name, by which a dangerous substance or article may be correctly identified or which is sufficiently informative to permit identification by reference to generally available literature.</i> |
| | 4440 | | D[USE 5] | an..70 | Free text value | Correct Technical Name |
| | 4440 | | | an..70 | Free text | n.a. |
| | 4440 | | | an..70 | Free text | n.a. |
| | 4440 | | | an..70 | Free text | n.a. |
| | 3453 | | M | an..3 | Language | as specified in ISO 639-1 |
| | 4447 | | | an..3 | Text formatting | n.a. |
| | | | | | | |
| CNI/GID/DGS | | | | | | |
| | | | | | | |
| CNI/GID/DGS | MEA | 3 | M | | <i>MEASUREMENTS</i> | <i>Total weight of the dangerous good within a transport</i> |
| | 6311 | | M | an..3 | Measurement purpose qualifier | WT for weights |
| | C502 | | M | | MEASUREMENT DETAILS | |
| | 6313 | | M | an..3 | Property measured | 'AAL' for net weight including normal packing |
| | 6321 | | | an..3 | Measurement significance, coded | n.a. |

| 1 | 2 | 3 | 4 | 5 | 6 | 7 |
|-------------|------------|---|---|----------------|--------------------------------------|---|
| | 6155 | | | an..17 | Measurement attribute identification | n.a. |
| | 6154 | | | an..70 | Measurement attribute | n.a. |
| | C174 | | M | | VALUE/RANGE | |
| | 6411 | | M | an..3 | Measurement unit qualifier | 'KGM' for kilogram (UNECE Rec. 20) |
| | 6314 | | M | an..18 (n9) | Measurement value | Weight of the dangerous good in the consignment |
| | 6162 | | | n..18 | Range minimum | n.a. |
| | 6152 | | | n..18 | Range maximum | n.a. |
| | 6432 | | | n..2 | Significant digits | n.a. |
| | 7383 | | | an..3 | Surface/layer indicator | n.a. |
| | | | | | | |
| CNI/GID/DGS | MEA | 3 | M | | <i>MEASUREMENTS</i> | <i>Total volume of the dangerous good within a transport</i> |
| | 6311 | | M | an..3 | Measurement purpose qualifier | 'VOL' for volume |
| | C502 | | M | | MEASUREMENT DETAILS | |
| | 6313 | | M | an..3 | Property measured | 'AAX' The observed volume after adjustment for factors such as temperature or gravity |
| | 6321 | | | an..3 | Measurement significance, coded | n.a. |
| | 6155 | | | an..17 | Measurement attribute identification | n.a. |
| | 6154 | | | an..70 | Measurement attribute | n.a. |

| 1 | 2 | 3 | 4 | 5 | 6 | 7 |
|-----------------------|--------------------|---|---|--------------------|---------------------------------|---|
| | C174 | | M | | VALUE/RANGE | |
| | 6411 | | M | an..3 | Measurement unit qualifier | 'TNE' for metric ton (UN/ECE Rec. 20) |
| | 6314 | | M | an..18 (n9) | Measurement value | Tonnage |
| | 6162 | | | n..18 | Range minimum | n.a. |
| | 6152 | | | n..18 | Range maximum | n.a. |
| | 6432 | | | n..2 | Significant digits | n.a. |
| | 7383 | | | an..3 | Surface/layer indicator | n.a. |
| | | | | | | |
| GRP 13 CNI/GID/DGS | SGP (1..99) | 4 | M | | SPLIT GOODS PLACEMENT | <i>Specification of the location of the goods.</i> For the transported cargo, this segment shall contain the identification of the vessel (barge) the cargo is stowed on. Remark: Cargo means, in this context, container, liquid cargo and general cargo |
| | | | M | | EQUIPMENT IDENTIFICATION | |
| | C237 | | M | an..17 (an7..8) | Equipment identification number | <i>Ship number.</i> 7 digits for IMO indication, 8 digits for unique European vessel identification number (ENI) |
| | 8260 | | M | an..3 | Code list qualifier | 'IMO' for an IMO-number, see Part IV, Article 2.03(2) 'ENI' for a unique European vessel identification number, see Part IV, Article 2.03(3) |
| | 1131 | | | an..3 | Code list responsible agency | n.a. |

| 1 | 2 | 3 | 4 | 5 | 6 | 7 |
|-----------------|------------|---|---|----------------|--------------------------------------|---|
| | 3055 | | | an..3 | Country | n.a. |
| | 3207 | | | n..8 | Number of packages | n.a. |
| | 7224 | | | | | |
| CNI/GID/DGS/SGP | MEA | 5 | M | | <i>MEASUREMENTS</i> | <i>Total of the goods within the vessel</i> |
| | 6311 | | M | an..3 | Measurement purpose qualifier | 'WT' for weights |
| | C502 | | M | | MEASUREMENT DETAILS | |
| | 6313 | | M | an..3 | Property measured | 'AAL' for net weight including normal packing |
| | 6321 | | | an..3 | Measurement significance, coded | n.a. |
| | 6155 | | | an..17 | Measurement attribute identification | n.a. |
| | 6154 | | | an..70 | Measurement attribute | n.a. |
| | C174 | | M | | VALUE/RANGE | |
| | 6411 | | M | an..3 | Measurement unit qualifier | 'KGM' for kilogram (UNECE Rec. 20) |
| | 6314 | | M | an..18 (n9) | Measurement value | Weight of the goods in the vessel |
| | 6162 | | | n..18 | Range minimum | n.a. |
| | 6152 | | | n..18 | Range maximum | n.a. |
| | 6432 | | | n..2 | Significant digits | n.a. |
| | 7383 | | | an..3 | Surface/layer indicator | n.a. |
| | | | | | | |

| 1 | 2 | 3 | 4 | 5 | 6 | 7 |
|-----------------|------------|---|---|----------------|--------------------------------------|---|
| CNI/GID/DGS/SGP | MEA | 5 | C | | <i>MEASUREMENTS</i> | <i>Total tonnage of the goods within the vessel</i> |
| | 6311 | | M | an..3 | Measurement purpose qualifier | 'VOL' for volume |
| | C502 | | M | | <i>MEASUREMENT DETAILS</i> | |
| | 6313 | | M | an..3 | Property measured | 'AAX' The observed volume after adjustment for factors such as temperature or gravity |
| | 6321 | | | an..3 | Measurement significance, coded | n.a. |
| | 6155 | | | an..17 | Measurement attribute identification | n.a. |
| | 6154 | | | an..70 | Measurement attribute | n.a. |
| | C174 | | M | | <i>VALUE/RANGE</i> | |
| | 6411 | | M | an..3 | Measurement unit qualifier | 'TNE' for metric ton (UNECE Rec. 20) |
| | 6314 | | M | an..18 (n9) | Measurement value | Tonnage |
| | 6162 | | | n..18 | Range minimum | n.a. |
| | 6152 | | | n..18 | Range maximum | n.a. |
| | 6432 | | | n..2 | Significant digits | n.a. |
| | 7383 | | | an..3 | Surface/layer indicator | n.a. |
| CNI/GID/DGS | SGP | 4 | C | | <i>SPLIT GOODS PLACEMENT</i> | <i>The location of the goods if in containers or tanks. If the goods are transported in containers or tanks at least one SGP combination specifying the ship on which the cargo is stowed shall be specified.</i> |

| 1 | 2 | 3 | 4 | 5 | 6 | 7 |
|-----------------|------------|---|---|--------|---------------------------------|--|
| | C237 | | M | | EQUIPMENT IDENTIFICATION | Identification |
| | 8260 | | M | an..17 | Equipment identification number | For containers the Container identification code shall be used (owner code, identifier, serial number, check digit), see Part IV, Article 2.03(13) For the transport of liquid cargo the code 'NA' shall be used. |
| | 1131 | | | an..3 | Code list qualifier | n.a. |
| | 3055 | | | an..3 | Code list responsible agency | n.a. |
| | 3207 | | | an..3 | Country | n.a. |
| | 7224 | | | n..8 | Number of packages | n.a. |
| | | | | | | |
| CNI/GID/DGS/SGP | LOC | 4 | C | | PLACE/LOCATION IDENTIFICATION | Stowage location |
| | 3227 | | M | an..3 | Place/location qualifier | For containers: '147' for stowage cell For tanks and other cargo: 'ZZZ' Mutually defined |
| | C517 | | M | | LOCATION IDENTIFICATION | |

| 1 | 2 | 3 | 4 | 5 | 6 | 7 |
|---|------|---|---|--------|---|--|
| | 3225 | | M | an..25 | Place/location identification | For containers 'BBBRRTT' for bay/row/tier (In accordance with ISO 9711-1 (1990)) For tanks: LLnn where - LL describes the location of the tank (PS for port side, SB for starboard, CC for Center side, CP for Center portside, CS for Center starboard (in case of 4-width configuration)) - nn describes the sequence number of the tank, starting with 01 from front to nn to the back. |
| | 1131 | | | an..3 | Code list qualifier | n.a. |
| | 3055 | | | an..3 | Code list responsible agency | n.a. |
| | 3224 | | | an..70 | Place/location | n.a. |
| | C519 | | | | RELATED LOCATION ONE IDENTIFICATION | n.a. |
| | 3223 | | | an..25 | Related place/location one identification | n.a. |
| | 1131 | | | an..3 | Code list qualifier | n.a. |
| | 3055 | | | an..3 | Code list responsible agency | n.a. |
| | 3222 | | | an..70 | Related place/location one | n.a. |
| | C553 | | | | RELATED LOCATION TWO IDENTIFICATION | n.a. |
| | 3233 | | | an..25 | Related place/location two identification | n.a. |
| | 1131 | | | an 3 | Code list qualifier | n.a. |

| 1 | 2 | 3 | 4 | 5 | 6 | 7 |
|-----------------|------------|---|----------|----------------|--------------------------------------|---|
| | 3055 | | | an..3 | Code list responsible agency | n.a. |
| | 3232 | | | an..70 | Related place/location two | n.a. |
| | 5479 | | | an 3 | Relation | n.a. |
| CNI/GID/DGS/SGP | MEA | 4 | D[6] | | <i>MEASUREMENTS</i> | <i>Specification of the weight of the good in the container</i> |
| | 6311 | | M | an..3 | Measurement purpose qualifier | WT for weights |
| | C502 | | M | | MEASUREMENT DETAILS | |
| | 6313 | | M | an..3 | Property measured | 'AAL' for net weight including normal packing |
| | 6321 | | | an..3 | Measurement significance, coded | n.a. |
| | 6155 | | | an..17 | Measurement attribute identification | n.a. |
| | 6154 | | D[Use 4] | an..70 | Measurement attribute | Container type (ISO 6346 chapter 4 and annexes D and E) |
| | C174 | | M | | VALUE/RANGE | |
| | 6411 | | M | an..3 | Measurement unit qualifier | 'KGM' for kilogram (UNECE Rec. 20) |
| | 6314 | | M | an..18 (n9) | Measurement value | Weight of the good in this container |
| | 6162 | | | n..18 | Range minimum | n.a. |
| | 6152 | | | n..18 | Range maximum | n.a. |
| | 6432 | | | n..2 | Significant digits | n.a. |

| 1 | 2 | 3 | 4 | 5 | 6 | 7 |
|-----------------|------------|---|------|----------------|--------------------------------------|---|
| | 7383 | | | an..3 | Surface/layer indicator | n.a. |
| | | | | | | |
| CNI/GID/DGS/SGP | MEA | 4 | D[6] | | <i>MEASUREMENTS</i> | <i>Total tonnage of the goods within the vessel</i> |
| | 6311 | | M | an..3 | Measurement purpose qualifier | 'VOL' for weights |
| | C502 | | M | | MEASUREMENT DETAILS | |
| | 6313 | | M | an..3 | Property measured | 'AAX' The observed volume after adjustment for factors such as temperature or gravity |
| | 6321 | | | an..3 | Measurement significance, coded | n.a. |
| | 6155 | | | an..17 | Measurement attribute identification | n.a. |
| | 6154 | | | an..70 | Measurement attribute | n.a. |
| | C174 | | M | | VALUE/RANGE | |
| | 6411 | | M | an..3 | Measurement unit qualifier | 'TNE' for metric ton (UNECE Rec. 20) |
| | 6314 | | M | an..18 (n9) | Measurement value | Tonnage |
| | 6162 | | | n..18 | Range minimum | n.a. |
| | 6152 | | | n..18 | Range maximum | n.a. |
| | 6432 | | | n..2 | Significant digits | n.a. |
| | 7383 | | | an..3 | Surface/layer indicator | n.a. |
| | | | | | | |
| CNI/GID/DGS | SGP | 4 | C | | <i>SPLIT GOODS PLACEMENT</i> | <i>The total weight of the container.</i> |

| 1 | 2 | 3 | 4 | 5 | 6 | 7 |
|-----------------|------------|------|----------|--------|--------------------------------------|--|
| | C237 | | M | | EQUIPMENT IDENTIFICATION | Identification |
| | 8260 | | M | an..17 | Equipment identification number | <i>For containers the Container identification code shall be used (owner code, identifier, serial number, check digit), see Part IV, Article 2.03(13)</i> <i>For the transport of liquid cargo the code 'NA' shall be used.</i> |
| | | 1131 | | an..3 | Code list qualifier | n.a. |
| | | 3055 | | an..3 | Code list responsible agency | n.a. |
| | | 3207 | | an..3 | Country | n.a. |
| | 7224 | | | n..8 | Number of packages | n.a. |
| CNI/GID/DGS/SGP | MEA | 4 | D[USE 7] | | <i>MEASUREMENTS</i> | <i>Specification of the verified gross mass of this container</i> |
| | 6311 | | M | an..3 | Measurement purpose qualifier | WT for weights |
| | C502 | | M | | MEASUREMENT DETAILS | |
| | | 6313 | M | an..3 | Property measured | 'VGM' Transport equipment verified gross mass |
| | | 6321 | | an..3 | Measurement significance, coded | n.a. |
| | | 6155 | | an..17 | Measurement attribute identification | n.a. |
| | | 6154 | | an..70 | Measurement attribute | n.a. |
| | C174 | | M | | VALUE/RANGE | |
| | | 6411 | M | an..3 | Measurement unit qualifier | 'KGM' for kilogram (UNECE Rec. 20) |

| 1 | 2 | 3 | 4 | 5 | 6 | 7 |
|-----------------|------------|---|----------|----------------|--------------------------------------|--|
| | 6314 | | M | an..18 (n9) | Measurement value | Verified gross mass (Weight) of this container |
| | 6162 | | | n..18 | Range minimum | n.a. |
| | 6152 | | | n..18 | Range maximum | n.a. |
| | 6432 | | | n..2 | Significant digits | n.a. |
| | 7383 | | | an..3 | Surface/layer indicator | n.a. |
| | | | | | | |
| CNI/GID/DGS/SGP | MEA | 4 | D[USE 7] | | <i>MEASUREMENTS</i> | <i>Specification of the Estimated gross weight of this container</i> |
| | 6311 | | M | an..3 | Measurement purpose qualifier | WT for weights |
| | C502 | | M | | MEASUREMENT DETAILS | |
| | 6313 | | M | an..3 | Property measured | 'ACN' Estimated gross weight |
| | 6321 | | | an..3 | Measurement significance, coded | n.a. |
| | 6155 | | | an..17 | Measurement attribute identification | n.a. |
| | 6154 | | | an..70 | Measurement attribute | n.a. |
| | C174 | | M | | VALUE/RANGE | |
| | 6411 | | M | an..3 | Measurement unit qualifier | 'KGM' for kilogram (UNECE Rec. 20) |
| | 6314 | | M | an..18 (n9) | Measurement value | Estimated gross weight of this container |
| | 6162 | | | n..18 | Range minimum | n.a. |

| 1 | 2 | 3 | 4 | 5 | 6 | 7 |
|---|------------|---|---|--------|---------------------------------|---|
| | 6152 | | | n..18 | Range maximum | n.a. |
| | 6432 | | | n..2 | Significant digits | n.a. |
| | 7383 | | | an..3 | Surface/layer indicator | n.a. |
| | UNT | 0 | M | | <i>MESSAGE TRAILER</i> | <i>End and control of completeness of the message</i> |
| | 0074 | | M | n..6 | Number of segments in a message | |
| | 0062 | | M | an..14 | Message reference number | First 14 positions of the message reference number |
| | UNZ | | M | | <i>INTERCHANGE TRAILER</i> | <i>End and control of the interchange</i> |
| | 0036 | | M | n..6 | Interchange control count | '1' for number of messages contained in the interchange |
| | 0020 | | M | an..14 | Interchange control reference | First 14 positions of the message reference number |

a) Clarification regarding the use of the CNI and GID segments

| Segment Group | Segment Composite data element (C) Data element TAG | Level | Status | Format | Name | Description Qualifiers in quotation marks |
|---------------|---|----------|----------|--------|---------------------------|--|
| CNI | GID (1..99) | 2 | M | | GOODS ITEM DETAILS | per vessel and per good a new GID segment |
| | 1496 | | M | n..5 | Goods item number | Sequence number of the good within a consignment. Unique within the CNI group |

Clarification:

- i) Each item shall be separately identified by means of the line (goods) item number and particulars.
 - ii) Goods item number: The sequence number of the good within a consignment. This means, if a consignment consists of several goods items, all the goods items shall be represented as unique goods items (GID). If the consignment only consists of one line (goods) item, the shipper (cargo sender) shall represent this in one line. It is important that commercial information remains unchanged in the respective messages and does not disappear.
 - iii) The division of an ERINOT message can be explained as follows:
 - A means of transport may contain in its cargo one or more consignments. Each consignment may contain one or more goods items, each with its own particulars. Consignments, including the goods within this respective consignment, may be divided over one or more vessels (e.g. in a convoy in one voyage).
 - Each container in itself is represented in the ERINOT message as separate consignment information group; as a result, the number of consignments will increase with each container.
- b) Dummy segments
- In some cases, amongst others in the passage message ERINOT(PAS), 'dummy' segments shall be used as part of mandatory groups of segments. For these 'dummy' segments the following rules apply:
- CNI group:
- CNI: sequence number: '9999'
- CNI/GID group:
- GID: sequence number: '99999'
- CNI/GID/DGS group:
- DGS:
 - Class type: 'IMD'
 - Classification: '0.0'
 - UNDG number: '0000'
 - FTX AAD: good name: 'DUMMY'
 - MEA: weight: 0

c) Empty vessels

If an empty vessel is reported, the following rules apply for the mandatory segment groups:

i) Empty of non-dangerous goods or unknown previous cargo:

CNI group:

- CNI: sequence number: '9999'

CNI/GID group:

- GID: sequence number: '99999'

CNI/GID/DGS group:

- DGS:
 - Class type: 'IMD'
 - Classification: '0.0'
 - UNDG number: '0000'
- FTX AAD: good name: 'DUMMY'
- MEA: weight: 0

ii) Empty of dangerous goods (in the case previous dangerous cargo were reported):

CNI group:

- CNI: valid sequence number
- LOC: source and destination (current voyage)

CNI/GID group:

- GID: valid sequence number
- FTX ACB: type of good: 'D', HS code of (previous) dangerous good

CNI/GID/DGS group:

- DGS: dangerous goods details (previous cargo)
- FTX AAD: dangerous good name
- MEA: weight: 0
- SGP: details of the empty vessel
- MEA: weight: 0

d) Container transport with non-dangerous goods

If containers are transported, the following extra rules apply for the mandatory groups if a container does not carry dangerous goods:

CNI group:

- CNI: valid sequence number
- LOC: source and destination

CNI/GID group:

- GID: valid sequence number
- FTX ACB: type of good: 'N', HS code of the good
- FTX AAA, good name, NST code of the good, HS code of the good
- SGP: details of the vessel
- MEA: total weight of the non-dangerous good in the vessel

CNI/GID/DGS group:

- DGS:
 - Class type: 'IMD'
 - Classification: '0.0'
 - UNDG number: '0000'
- FTX AAD: good name: 'DUMMY'
- MEA: weight: 0
- SGP group (1):
 - SGP: vessel details
 - MEA: weight of the good in the vessel
- SGP group (2-99):
 - SGP: Container number
 - MEA: weight of the good in the container

This way of entering data for a container loaded with non-dangerous goods follows the way the data for a container with dangerous goods are entered. Due to compatibility reasons with previous versions, the vessel details are entered twice.

e) Stowage encoding for 30' and 45'containers

If for a 30'container the front of the container falls between two 20' slots, the highest bay number is used for the encoding of the 30' container.

The 45' container is used in similar manner as a 40' container (even bay slot number). The container type will be used to uniquely determine that the slot contains a 45' container.

f) Containers with unknown details on the goods or empty containers

If containers are transported where the details of the goods in the containers are not known, or empty containers are transported, the following extra rules apply:

EQD group:

EQD: container range

MEA: number of containers in the given range

CNI group:

CNI: valid sequence number

LOC: source and destination

CNI/GID group:

GID: valid sequence number

FTX ACB: type of good: 'N', HS code

FTX AAA: good name, NST code, HS code

SGP: details of the vessel

MEA: total weight of the containers in the given range

CNI/GID/DGS group:

dummy group

Depending on the range of containers the following codes shall be used:

| | HS code | |
|-------------------------|------------|--|
| Containers 20 ft empty | 8609000002 | |
| Containers 30 ft empty | 8609000004 | |
| Containers 40 ft empty | 8609000003 | |
| Containers 20 ft loaded | 8609000007 | |
| Containers 30 ft loaded | 8609000008 | |
| Containers 40 ft loaded | 8609000009 | |

g) Exchanging information between RIS authorities

When exchanging information between RIS authorities, a passage message type shall be used by specifying 'PAS' in the BGM segment (element 1001).

In this PAS message the following information regarding the voyage shall be included:

- BGM element 1001 = 'PAS'.
- TDT group:
 - LOC(1), type '5' = Place of departure.
 - LOC(2), type '172' = Passage point.
 - LOC(9), type '153' = Place of destination (first port where transport is bound).
 - DTM(2), type '186' = Passage time of LOC(2).
 - DTM(3), type '132' = ETA of LOC(9) only if available.
- CNI groups with all the (known) cargo onboard.

The CNI group may be empty only if it is a passage message notifying another (local) party of the last position/passage point of that vessel.

h) Cancelling a notification or notifying an interruption/a restart of a voyage

When cancelling a notification or when notifying an interruption/a restart of a voyage, the following information shall be specified:

- BGM element 1225 = '1' or '150' or '151' (according to message function).
- RFF(ACW) element 1154 refers to the last message sent.
- All other segments (TDT, CNI, etc.) contain the same information as specified in the last notification message sent.

4. XML edition of ERINOT

Both XSD and UN/EDIFACT formats of the ERINOT message are functionally equivalent and share the same business rules.

In the ERINOT message structure in UN/EDIFACT format, the column 'Description Qualifiers in quotation marks' indicates which information should be provided in a particular data element, including additional restrictions on size and allowed character set. In the XSD, these fill-in instructions are included in the 'xs:annotation' field of the respective data elements. This field also integrates a subfield 'xs:documentation' which indicates the corresponding field name of the UN/EDIFACT format. Besides, the instructions which are applicable for the UN/EDIFACT format are also applicable by default in the XSD. If additional information or deviating restrictions are required, it will be provided in this field.

Appendix 1 XML edition of ERINOT, XSD file (source code) (Distributed separately)

ANNEX 13

PASSENGER AND CREW LIST - PAXLST

1. Objective of the message PAXLST

a) Functional definition

The passenger/crew list message (PAXLST) permits the transfer of passenger or crew data, or both. The message shall be used for the exchange of data in inland navigation between the captain/skipper or carrier and designated authorities such as ISPS terminals, customs, immigration, police.

The message shall be also used to transfer passenger/crew data from a designated authority in the country of departure to the appropriate authorities in the country of arrival of the means of transport.

b) Field of application

The passenger list message can be used for both national and international applications. It is based on general practice in administration, commerce and transport, and it is not dependent on the type of business or industry, neither on the mode of transport. The basic concept of the PAXLST message is that there is one message for all crew members for a specified ship on a specified voyage, and another message for the passengers on that voyage whilst also possible stowaways can be reported through a separate message. The messages can be transmitted separately or combined into one transmission.

The message supports the implementation — by means of EDI — of the following reporting needs:

- i) national reporting requirements with respect to crew/passengers and stowaway
- ii) Regulation (EC) No 725/2004 on enhancing ship and port facility security also has provisions related to crew and passenger lists.

Moreover, in accordance with recommended practice set out in the Convention on the Facilitation of International Maritime Traffic, maritime authorities are not to require more than the following information in the crew list:

- iii) Name and nationality of ship (country of the inspection body that issued the last vessel certificate)
- iv) Family name
- v) Given names
- vi) Nationality
- vii) Rank or rating
- viii) Date and place of birth
- ix) Nature and number of identity document
- x) Port and date of arrival
- xi) Arriving from

In addition, in accordance with the requirements of the competent authorities in inland shipping, the following information might be required:

- xii) Names of visitors to a vessel
- xiii) Licence plates of the vehicles
- xiv) Exact place and time of boarding and going ashore

- xv) Required services such as deliveries, stores and spares
 - xvi) Names of repair people together with company name
 - xvii) Changes of crew
 - xviii) Children of the crew.
- All these details can be exchanged through the PAXLST message.

2. Message structure in the UN/EDIFACT format

The passenger respectively crew list notification is based on the UN/EDIFACT message PAXLST.

The structure for implementation of the crew or passenger list notification message is as follows:

a) Segment index (alphabetical sequence by tag)

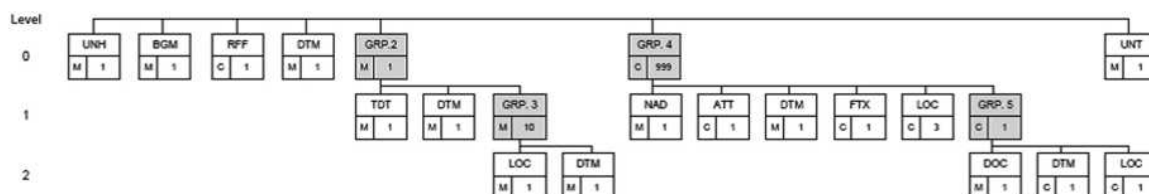
- UNH Message header
- BGM Beginning of message
- ATT Attribute
- DOC Document/message details
- DTM Date/time/period
- FTX Free text
- LOC Place/location identification
- NAD Name and address
- RFF Reference
- TDT Details of transport
- UNT Message trailer

b) Segment table

| Pos | Tag | Name | S | R |
|------|-----|-------------------------------|---|-----|
| | UNA | | C | 1 |
| | UNB | | M | 1 |
| 0010 | UNH | Message header | M | 1 |
| 0020 | BGM | Beginning of message | M | 1 |
| 0090 | | Segment group 2 | | |
| 0100 | TDT | Details of transport | M | 1 |
| 0110 | DTM | Date/time/period | M | 1 |
| 0120 | | Segment group 3 | M | 4 |
| 0130 | LOC | Place/location identification | M | 1 |
| 0140 | DTM | Date/time/period | M | 1 |
| 0150 | | Segment group 4 | C | 999 |
| 0160 | NAD | Name and address | M | 1 |
| 0170 | ATT | Attribute | C | 1 |

| Pos | Tag | Name | S | R |
|------|-----|-------------------------------|---|---|
| 0180 | DTM | Date/time/period | M | 1 |
| 0210 | FTX | Free text | C | 1 |
| 0220 | LOC | Place/location identification | C | 3 |
| 0270 | | Segment group 5 | C | 1 |
| 0280 | DOC | Document/message details | M | 1 |
| 0290 | DTM | Date/time/period | C | 1 |
| 0320 | LOC | Place/location identification | C | 1 |
| 0440 | UNT | Message trailer | M | 1 |

c) Branching diagram



d) Passenger / Crew list message format in UN/EDIFACT format

| Segment Group | Segment Composite data element (C) Data element TAG | Level | Status | Format | Name | Description Qualifiers in quotation marks |
|---------------|---|----------|----------|--------|--|--|
| 1 | 2 | 3 | 4 | 5 | 6 | 7 |
| | UNA | 0 | C | | Service String Advice | |
| | | | M | an1 | Component data element separator | |
| | | | M | an1 | Segment Tag and Data element separator | + |
| | | | M | an1 | Decimal notation | |
| | | | M | an1 | Release indicator | ? |
| | | | M | an1 | Reserved future use | space |
| | | | M | an1 | Segment terminator | ' |
| | | | | | <i>Advised string: UNA:+.? '</i> | 6 characters |
| | UNB | 0 | M | | Interchange header | |
| | S001 | | M | | SYNTAX IDENTIFIER | |
| | | 0001 | M | a4 | Syntax identifier | 'UNOC' Controlling agency |
| | | 0002 | M | n1 | Syntax version number | '2' |
| | S002 | | M | | INTERCHANGE SENDER | |

| 1 | 2 | 3 | 4 | 5 | 6 | 7 |
|---|------|---|---|------------------|---|--|
| | 0004 | | M | an..35 (an25) | Sender identification | Mailbox number or unique name or the unique identifier of a RIS-centre or traffic post |
| | 0007 | | | an..4 | Partner identification code qualifier | n.a. |
| | 0008 | | | an..14 | Address for reverse routing | n.a. |
| | S003 | | M | | INTERCHANGE RECIPIENT | |
| | 0010 | | M | an..35 (an25) | Recipient identification | Mailbox number or unique name or the unique identifier of a RIS-centre or traffic post |
| | 0007 | | | an..4 | Partner identification code qualifier | n.a. |
| | 0014 | | | an..14 | Routing address | n.a. |
| | S004 | | M | | DATE/TIME OF PREPARATION | |
| | 0017 | | M | n6 | Date | Generation date, YYMMDD |
| | 0019 | | M | n4 | Time | Generation time, HHMM |
| | 0020 | | M | an..14 | Interchange reference identification. | First 14 positions of the message reference number |
| | S005 | | C | | RECIPIENTS REFERENCE, PASSWORD | n.a. |
| | 0022 | | | an..14 | Recipient's reference/password | n.a. |
| | 0025 | | | an2 | Recipient's reference, password qualifier | n.a. |
| | 0026 | | | an..14 | Application reference | n.a. |
| | 0029 | | | a1 | Processing priority code | n.a. |
| | 0031 | | C | n1 | Acknowledgement request | '1' = Sender requests acknowledgement, i.e. UNB and UNZ segments received and identified |

| 1 | 2 | 3 | 4 | 5 | 6 | 7 |
|---|------------|----------|----------|--------|-----------------------------|---|
| | 0032 | | | an..35 | Communications agreement id | n.a. |
| | 0035 | | C | n1 | Test indicator | '1' = the interchange relates to a test message |
| | | | | | | |
| | UNH | | M | | MESSAGE HEADER | Identification, specification and heading of a message |
| | 0062 | | M | an..14 | Message reference number | First 14 positions of the message number |
| | S009 | | M | | MESSAGE IDENTIFIER | Message identification |
| | | 0065 | M | an..6 | Message type | 'PAXLST', message type |
| | | 0052 | M | an..3 | Message version number | 'D', message version number |
| | | 0054 | M | an..3 | Message release number | '05A', message release number |
| | | 0051 | M | an..2 | Controlling agency | 'UN', controlling agency |
| | | 0057 | M | an..6 | Association assigned code | 'ERI13', ERI Version 1.3 |
| | 0068 | | M | an..35 | Common access reference | Common access reference Reference to all messages related to one common file |
| | S010 | | | | STATUS OF THE TRANSFER | Transfer status |
| | | 0070 | | n..2 | Sequence of transfers | n.a. |
| | | 0073 | | a1 | First and last transfer | n.a. |
| | | | | | | |
| | BGM | 0 | M | | BEGINNING OF MESSAGE | Identification of the type and function of the message |

| 1 | 2 | 3 | 4 | 5 | 6 | 7 |
|---|------|---|---|------------------|-----------------------------------|---|
| | C002 | | | | Document/message name | Message name |
| | 1001 | | M | an..3 | Document name code | Message type: '250' crew list 745' passenger list '10' stowaway list |
| | 1131 | | | an..17 | Code list identification code | n.a. |
| | 3055 | | | an..3 | Code list responsible agency code | n.a. |
| | 1000 | | M | an..35 | Document name | Document name: 'CREW LIST' 'PASSENGER LIST' 'STOWAWAY LIST' (One PAXLST message contains one document.) |
| | C106 | | M | | Document/message identification | |
| | 1004 | | M | an..35 an(15) | Document identifier | message reference number |
| | 1056 | | C | an..9 | Version identifier | version identifier |
| | 1060 | | C | an..6 | Revision identifier | revision identifier |

| 1 | 2 | 3 | 4 | 5 | 6 | 7 |
|---|------------|----------|----------|--------|--------------------------|---|
| | 1225 | | M | an..3 | MESSAGE FUNCTION CODE | Function of message '1' = cancellation message '9' = new message (original) '5' = modification message '22' = Final transmission (End of voyage) '150' = Interruption of voyage '151' = Restart of voyage |
| | 4343 | | | an..3 | RESPONSE TYPE CODE | QA |
| | | | | | | |
| | RFF | 0 | C | | REFERENCE | Reference to the message which is changed, mandatory if the message is a modification message |
| | C506 | | M | | REFERENCE | Reference |
| | 1153 | | M | an..3 | Reference qualifier | 'ACW' |
| | | 1154 | M | an..35 | Reference number | (an14) message reference number of the BGM, tag 1004 of the message the current message refers to |
| | | 1156 | | an..6 | Line number | n.a. |
| | | 4000 | | an..35 | Reference version number | n.a. |
| | | 1060 | | an..35 | Revision number | n.a. |
| | | | | | | |
| | DTM | 0 | M | | DATE/TIME/PERIOD | |
| | C507 | | M | | DATE/TIME/PERIOD | Date/time/period |

| 1 | 2 | 3 | 4 | 5 | 6 | 7 |
|---|------------|----------|----------|--------|---|---|
| | 2005 | | M | an..3 | Date or time or period function code qualifier | '184' Notification date |
| | 2380 | | M | an..35 | Date or time period value | Time: CCYYMMDD |
| | 2379 | | M | an..3 | Date or time or period format code | '102' |
| | | | | | | |
| | TDT | 1 | M | | Specification of the means of transport | Specification of the means of transport, the naming vessel within a convoy (a single vessel without barge is also a convoy in this context) |
| | 8051 | | M | an..3 | '20' (main transport) | Transport stage code qualifier |
| | 8028 | | C | an..17 | Conveyance reference number | Voyage number, defined by sender of the message |
| | C220 | | M | | Transport modality | n.a. |
| | 8067 | | M | an..3 | Mode of transport, coded | '8' for inland water transport, '1' for maritime transport (see UNECE Rec. 19) |
| | 8066 | | | an..17 | Transport mode name | n.a. |
| | C001 | | M | | Type of means of transport identification, convoy type | Code for ship and convoy types of means of transport from UNCEFACT Rec. 28, see Part IV, Article 2.03(1) |
| | 8179 | | | an..8 | Transport means description code | n.a. |
| | 1131 | | | an..17 | Code list identification code | n.a. |
| | 3055 | | | an..3 | Code list responsible agency code | n.a. |
| | 8178 | | | an..17 | Transport means description | n.a. |
| | C040 | | | | Carrier | |

| 1 | 2 | 3 | 4 | 5 | 6 | 7 |
|---|------|---|---|-------------------|--|---|
| | 3127 | | | an..17 | Carrier identifier | n.a. |
| | 1131 | | | an..17 | Code list identification code | n.a. |
| | 3055 | | | an..3 | Code list responsible agency code | n.a. |
| | 3128 | | | an..35 | Carrier name | n.a. |
| | 8101 | | | an..3 | Transit direction indicator code | n.a. |
| | C401 | | | | Excess transportation information | n.a. |
| | 8457 | | | an..3 | Excess transportation reason code | n.a. |
| | 8459 | | | an..3 | Excess transportation responsibility code. | n.a. |
| | 7130 | | | an..17 | Customer shipment authorisation identifier | n.a. |
| | C222 | | M | | Transport identification | |
| | 8213 | | M | an..9 (an7..8) | ID. of means of transport identification | <i>Vessel number.</i> 7 digits for IMO indication, 8 digits for unique European vessel identification number (ENI) |
| | 1131 | | M | an..17 | Code list qualifier | 'IMO' for an IMO number, see Part IV, Article 2.03(2) 'ENI' for a unique European vessel identification number, see Part IV, Article 2.03(3) |
| | 3055 | | | an..3 | Code list responsible agency code | n.a. |
| | 8212 | | M | an..35 | Name of the vessel | <i>Name of the ship.</i> If the name results in more than 35 positions, the name of the vessel is shortened. |

| 1 | 2 | 3 | 4 | 5 | 6 | 7 |
|------------|---------------|----------|----------|-----------------|--|--|
| | 8453 | | M | an..3 | (an2) Nationality, ISO 3166 country code | ISO two-alpha country code 3166-1, see Part IV, Article 2.03(8) Dependency note. The country of the inspection body that issued the last vessel certificate. |
| | 8281 | | | an..3 | Transport means ownership indicator code. | n.a. |
| | | | | | | |
| TDT | DTM | 1 | M | TDT(20) | Estimated time of arrival/departure | |
| | C507 | | | | Date/time/period | |
| | 2005 | | M | an..3 | Date or time or period function code qualifier | '132' for arrival '133' for departure |
| | 2380 | | M | an..35 | Date or time period value | Given in the local time of the place of arrival |
| | 2379 | | M | an..3 | Date or time or period format code | '203' for CCYYMMDDHHMM |
| | | | | | | |
| TDT | LOC(1) | 1 | M | | PLACE/LOCATION IDENTIFICATION | <i>Port of departure</i> , the port where the transport starts |
| | 3227 | | M | an..3 | Place/location qualifier | '5' place of departure |
| | C517 | | M | | LOCATION IDENTIFICATION | |
| | 3225 | | M | an..35 (an5) | Place/location identification | UNECE location code (Rec. 16), see Part IV, Article 2.03(9) |
| | 1131 | | | an..17 | Code list qualifier | n.a. |
| | 3055 | | | an..3 | Code list responsible agency | n.a. |

| 1 | 2 | 3 | 4 | 5 | 6 | 7 |
|-----------------|------------|----------|----------|---------------------|---|---|
| | 3224 | | D[Use 1] | an..256 (an..17) | Place/location | Full name of the port location |
| | C519 | | C | | RELATED LOCATION ONE IDENTIFICATION | |
| | 3223 | | M | an..25 (an..5) | Related place/location one identification | Terminal code, Part IV, Article 2.03(11) |
| | 1131 | | | an..17 | Code list qualifier | n.a. |
| | 3055 | | | an..3 | Code list responsible agency | n.a. |
| | 3222 | | D[Use 1] | an..70 | Related place/location one | Full name of the terminal |
| | C553 | | C | | RELATED LOCATION TWO IDENTIFICATION | |
| | 3233 | | M | an..25 (an5) | Related place/location two identification | Fairway section code, see Part IV, Article 2.03(10) |
| | 1131 | | | an..17 | Code list qualifier | n.a. |
| | 3055 | | | an..3 | Code list responsible agency | n.a. |
| | 3232 | | C | an..70 (an..5) | Related place/location two | Fairway section hectometre |
| | 5479 | | | an..3 | Relation | n.a. |
| | | | | | | |
| TDT/LOC1 | DTM | 1 | M | | Estimated time of departure | |
| | C507 | | | | Date/time/period | |

| 1 | 2 | 3 | 4 | 5 | 6 | 7 |
|------------|---------------|----------|----------|---------------------|---|---|
| | 2005 | | M | an..3 | Date or time or period function code qualifier | '133' for departure |
| | 2380 | | M | an..35 | Date or time period value | Given in the local time of the place of arrival |
| | 2379 | | M | an..3 | Date or time or period format code | '203' for CCYYMMDDHHMM |
| | | | | | | |
| TDT | LOC(2) | 1 | M | | PLACE/LOCATION IDENTIFICATION | First port of call |
| | 3227 | | M | an..3 | Place/location qualifier | '87' |
| | C517 | | M | | LOCATION IDENTIFICATION | |
| | 3225 | | M | an..35 (an5) | Place/location identification | UNECE location code (Rec. 16), see Part IV, Article 2.03(9) |
| | 1131 | | | an..17 | Code list qualifier | n.a. |
| | 3055 | | | an..3 | Code list responsible agency | n.a. |
| | 3224 | | D[Use 1] | an..256 (an..17) | Place/location | Full name of the port location |
| | C519 | | C | | RELATED LOCATION ONE IDENTIFICATION | |
| | 3223 | | M | an..25 (an..5) | Related place/location one identification | Terminal code, see Part IV, Article 2.03(11) |
| | 1131 | | | an..17 | Code list qualifier | n.a. |
| | 3055 | | | an..3 | Code list responsible agency | n.a. |
| | 3222 | | D[Use 1] | an..70 | Related place/location one | Full name of the terminal |

| 1 | 2 | 3 | 4 | 5 | 6 | 7 |
|------------------|---------------|----------|----------|----------------|--|---|
| | C553 | | C | | RELATED LOCATION TWO IDENTIFICATION | |
| | 3233 | | M | an..25 (an5) | Related place/location two identification | Fairway section code, see Part IV, Article 2.03(10) |
| | 1131 | | | an..17 | Code list qualifier | n.a. |
| | 3055 | | | an..3 | Code list responsible agency | n.a. |
| | 3232 | | C | an..70 (an..5) | Related place/location two | Fairway section hectometre |
| | 5479 | | | an..3 | Relation | n.a. |
| | | | | | | |
| TDT/LOC 2 | DTM | 1 | M | | Estimated time of first port of call | |
| | C507 | | | | Date/time/period | |
| | 2005 | | M | an..3 | Date or time or period function code qualifier | '252' Arrival date/time at initial port |
| | 2380 | | M | an..35 | Date or time period value | Given in the local time of the place of arrival |
| | 2379 | | M | an..3 | Date or time or period format code | '203' for CCYYMMDDHHMM |
| | | | | | | |
| TDT | LOC(3) | 1 | M | | PLACE/LOCATION IDENTIFICATION | Last port of call |
| | 3227 | | M | an..3 | Place/location qualifier | '125' |
| | C517 | | M | | LOCATION IDENTIFICATION | |

| 1 | 2 | 3 | 4 | 5 | 6 | 7 |
|---|------|---|----------|---------------------|---|---|
| | 3225 | | M | an..35 (an5) | Place/location identification | UNECE location code (Rec. 16), see Part IV, Article 2.03(9) |
| | 1131 | | | an..17 | Code list qualifier | n.a. |
| | 3055 | | | an..3 | Code list responsible agency | n.a. |
| | 3224 | | D[Use 1] | an..256 (an..17) | Place/location | Full name of the port location |
| | C519 | | C | | RELATED LOCATION ONE IDENTIFICATION | |
| | 3223 | | M | an..25 (an..5) | Related place/location one identification | Terminal code, see Part IV, Article 2.03(11) |
| | 1131 | | | an..17 | Code list qualifier | n.a. |
| | 3055 | | | an..3 | Code list responsible agency | n.a. |
| | 3222 | | D[Use 1] | an..70 | Related place/location one | Full name of the terminal |
| | C553 | | C | | RELATED LOCATION TWO IDENTIFICATION | |
| | 3233 | | M | an..25 (an5) | Related place/location two identification | Fairway section code, see Part IV, Article 2.03(10) |
| | 1131 | | | an..17 | Code list qualifier | n.a. |
| | 3055 | | | an..3 | Code list responsible agency | n.a. |
| | 3232 | | C | an..70 (an..5) | Related place/location two | Fairway section hectometre |
| | 5479 | | | an..3 | Relation | n.a. |

| 1 | 2 | 3 | 4 | 5 | 6 | 7 |
|------------------|---------------|----------|----------|---------------------|---|---|
| TDT/LOC 3 | DTM | 1 | M | | Estimated time of arrival/departure | |
| | C507 | | | | Date/time/period | |
| | 2005 | | M | an..3 | Date or time or period function code qualifier | '253' Departure date/time from last port of call |
| | 2380 | | M | an..35 | Date or time period value | Given in the local time of the place of arrival |
| | 2379 | | M | an..3 | Date or time or period format code | '203' for CCYYMMDDHHMM |
| TDT | LOC(4) | 1 | M | | PLACE/LOCATION IDENTIFICATION | Port of arrival |
| | 3227 | | M | an..3 | Place/location qualifier | '60' |
| | C517 | | M | | LOCATION IDENTIFICATION | |
| | 3225 | | M | an..35 (an5) | Place/location identification | UNECE location code (Rec. 16), see Part IV, Article 2.03(9) |
| | 1131 | | | an..17 | Code list qualifier | n.a. |
| | 3055 | | | an..3 | Code list responsible agency | n.a. |
| | 3224 | | D[Use 1] | an..256 (an..17) | Place/location | Full name of the port location |
| | C519 | | C | | RELATED LOCATION ONE IDENTIFICATION | |
| | 3223 | | M | an..25 (an..5) | Related place/location one identification | Terminal code, see Part IV, Article 2.03(11) |

| 1 | 2 | 3 | 4 | 5 | 6 | 7 |
|------------------|------------|----------|----------|----------------|---|---|
| | 1131 | | | an..17 | Code list qualifier | n.a. |
| | 3055 | | | an..3 | Code list responsible agency | n.a. |
| | 3222 | | D[Use 1] | an..70 | Related place/location one | Full name of the terminal |
| | C553 | | C | | RELATED LOCATION TWO IDENTIFICATION | |
| | 3233 | | M | an..25 (an5) | Related place/location two identification | Fairway section code, see Part IV, Article 2.03(10) |
| | 1131 | | | an..17 | Code list qualifier | n.a. |
| | 3055 | | | an..3 | Code list responsible agency | n.a. |
| | 3232 | | C | an..70 (an..5) | Related place/location two | Fairway section hectometre |
| | 5479 | | | an..3 | Relation | n.a. |
| | | | | | | |
| TDT/LOC 4 | DTM | 1 | M | | Estimated time of arrival/departure | |
| | C507 | | | | Date/time/period | |
| | 2005 | | M | an..3 | Date or time or period function code qualifier | '132' for arrival |
| | 2380 | | M | an..35 | Date or time period value | Given in the local time of the place of arrival |
| | 2379 | | M | an..3 | Date or time or period format code | '203' for CCYYMMDDHHMM |
| | | | | | | |
| GRP 4 | NAD | 0 | M | | NAME and ADDRESS | Name and address details of person |

| 1 | 2 | 3 | 4 | 5 | 6 | 7 |
|---|------|------|---|--------|-------------------------------|---|
| | 3035 | | M | an..3 | Party function code qualifier | Name type: 'FM' for crew member 'FL' for passenger 'BV' for stowaway persons |
| | C082 | | C | | PARTY IDENTIFICATION DETAILS | Name identification |
| | | 3039 | | an..35 | Party identification | Code or textual description of the relation |
| | | 1131 | | an..17 | Code list qualifier | n.a. |
| | | 3055 | | an..3 | Code list responsible agency | n.a. |
| | C058 | | M | | NAME AND ADDRESS | n.a. |
| | | 3124 | M | an..35 | Name and address line | Family name |
| | | 3124 | M | an..35 | Name and address line | Given names |
| | | 3124 | C | an..35 | Name and address line | Prefix (gender) |
| | | 3124 | | an..35 | Name and address line | n.a. |
| | | 3124 | | an..35 | Name and address line | n.a. |
| | C080 | | C | | PARTY NAME | |
| | | 3036 | | an..35 | Party name | n.a. |
| | | 3036 | | an..35 | Party name | n.a. |
| | | 3036 | | an..35 | Party name | n.a. |
| | | 3036 | | an..35 | Party name | n.a. |
| | | 3036 | | an..35 | Party name | n.a. |

| 1 | 2 | 3 | 4 | 5 | 6 | 7 |
|--------------|------------|----------|----------|--------|---|---|
| | 3045 | | | an..3 | Party name format, coded | n.a. |
| | C059 | | C | | STREET | |
| | 3042 | | C | an..35 | Street and number/PO box | Street and number or post office box |
| | 3042 | | | an..35 | Street and number/PO box | n.a. |
| | 3042 | | | an..35 | Street and number/PO box | n.a. |
| | 3042 | | | an..35 | Street and number/PO box | n.a. |
| | 3164 | | C | an..35 | City name | City |
| | C819 | | C | | Country sub-entity identification | n.a. |
| | 3229 | | C | an..9 | Country sub-entity name code | Postal identification code |
| | 1131 | | C | an..17 | Code list identification code | n.a. |
| | 3055 | | | an..3 | Code list responsible agency code | n.a. |
| | 3228 | | | an..70 | Country sub-entity name | n.a. |
| | 3251 | | C | an..17 | postal code | |
| | 3207 | | M | an..3 | (an2) nationality, ISO3166 country code | ISO 3166-1 two alpha country code, see Part IV, Article 2.03(8) |
| GRP 4 | ATT | 1 | C | | Rank/title | Rank/title |
| | 9017 | | M | an..3 | Attribute function qualifier | '5' Professional title '1' Crew member |
| | C955 | | C | | Attribute type | |

| 1 | 2 | 3 | 4 | 5 | 6 | 7 |
|------------|------------|----------|----------|---------|---|---------------------------------------|
| | 9021 | | | an..17 | Attribute type, coded | |
| | 1131 | | | an..17 | Code list identification code | n.a. |
| | 3055 | | | an..3 | Code list responsible agency code | n.a. |
| | 9020 | | | an..70 | Attribute type description | n.a. |
| | C956 | | C | | Attribute detail | |
| | 9019 | | | an..17 | Attribute description code | n.a. |
| | 1131 | | | an..17 | Code list identification code | n.a. |
| | 3055 | | | an..3 | Code list responsible agency code | n.a. |
| | 9018 | | M | an..256 | Attribute description | Rank/title name e.g. Chief officer |
| | | | | | | |
| NAD | DTM | 1 | M | | DATE/TIME/PERIOD | Date of birth |
| | C507 | | | | Date/time/period | Date/time/period |
| | 2005 | | M | an..3 | Date or time or period function code qualifier | '329' |
| | 2380 | | M | an..35 | Date or time period value | Date: CCYYMMDD |
| | 2379 | | M | an..3 | Date or time or period format code | '102' |
| | | | | | | |
| NAD | FTX | 1 | C | | Free text | General information |

| 1 | 2 | 3 | 4 | 5 | 6 | 7 |
|------------|---------------|---|----------|---------|--------------------------------------|--|
| | 4451 | | M | an..3 | Text subject qualifier | Text subject type 'AAI' General Information |
| | 4453 | | | an..3 | Text function, coded | |
| | C107 | | C | | Text reference | |
| | 4441 | | M | an..17 | Free text, coded | Call information related to boarding of persons. General information on the call of the vessel. |
| | 1131 | | | an..17 | Code list qualifier | n.a. |
| | 3055 | | | an..3 | Code list responsible agency, coded | n.a. |
| | C108 | | C | | Text literal | |
| | 4440 | | C | an..512 | Free text | License number vehicle |
| | 4440 | | C | an..512 | Free text | Visitor |
| | 4440 | | C | an..512 | Free text | Company name of service provider and other details |
| | 4440 | | C | an..512 | Free text | Names and duration of visit of the visiting children |
| | 4440 | | D[Use 2] | an..512 | Free text | Health Status |
| | 3453 | | | an..3 | Language, coded. | |
| | 4447 | | | an..3 | Text formatting, coded | |
| | | | | | | |
| NAD | LOC(1) | | M | | PLACE/LOCATION IDENTIFICATION | Place of birth |
| | 3227 | | M | an..3 | Place/location qualifier | '180' |

| 1 | 2 | 3 | 4 | 5 | 6 | 7 |
|---|------|------|---|---------------------|---|---|
| | C517 | | M | | LOCATION IDENTIFICATION | |
| | | 3225 | C | an..35 (an5) | Place/location identification | ISO 3166-1 two alpha country code, see Part IV, Article 2.03(8) |
| | | 1131 | | an..17 | Code list qualifier | n.a. |
| | | 3055 | | an..3 | Code list responsible agency | n.a. |
| | | 3224 | M | an..256 (an..35) | Place/location | Place of birth |
| | C519 | | C | | RELATED LOCATION ONE IDENTIFICATION | n.a. |
| | | 3223 | | an..35 | Related place/location one identification | n.a. |
| | | 1131 | | an..17 | Code list qualifier | n.a. |
| | | 3055 | | an..3 | Code list responsible agency | n.a. |
| | | 3222 | | an..70 | Related place/location one | n.a. |
| | C553 | | | | RELATED LOCATION TWO IDENTIFICATION | n.a. |
| | | 3233 | | an..25 | Related place/location two identification | n.a. |
| | | 1131 | | an..17 | Code list qualifier | n.a. |
| | | 3055 | | an..3 | Code list responsible agency | n.a. |
| | | 3232 | | an..70 | Related place/location two | n.a. |
| | 5479 | | | an..3 | Relation | n.a. |
| | | | | | | |

| 1 | 2 | 3 | 4 | 5 | 6 | 7 |
|------------|---------------|---|----------|-----------------|---|---|
| NAD | LOC(2) | | M | | PLACE/LOCATION IDENTIFICATION | Place of Embarkation |
| | 3227 | | M | an..3 | Place/location qualifier | '178' for place of Embarkation |
| | C517 | | M | | LOCATION IDENTIFICATION | |
| | 3225 | | C | an..35 (an5) | Place/location identification | UNECE location code (Rec. 16) of the port, see Part IV, Article 2.03(9) |
| | 1131 | | | an..17 | Code list qualifier | n.a. |
| | 3055 | | | an..3 | Code list responsible agency | n.a. |
| | 3224 | | D[Use 1] | an..256 | Place/location | Full name of the port location |
| | C519 | | C | | RELATED LOCATION ONE IDENTIFICATION | |
| | 3223 | | M | an..35 (an5) | Related place/location one identification | Terminal code, see Part IV, Article 2.03(11) |
| | 1131 | | | an..17 | Code list qualifier | n.a. |
| | 3055 | | | an..3 | Code list responsible agency | n.a. |
| | 3222 | | D[Use 1] | an..70 | Related place/location one | Full name of the terminal |
| | C553 | | C | | RELATED LOCATION TWO IDENTIFICATION | |
| | 3233 | | M | an..35 (an5) | Related place/location two identification | Fairway section code, see Part IV, Article 2.03(10) |
| | 1131 | | | an..17 | Code list qualifier | |
| | 3055 | | | an..3 | Code list responsible agency | n.a. |

| 1 | 2 | 3 | 4 | 5 | 6 | 7 |
|------------|---------------|---|----------|-----------------|---|---|
| | 3232 | | C | an..70 (an5) | Related place/location two | Fairway section hectometre |
| | 5479 | | | an..3 | Relation | n.a. |
| NAD | LOC(3) | | M | | PLACE/LOCATION IDENTIFICATION | Place of Disembarkation |
| | 3227 | | M | an..3 | Place/location qualifier | '179' for place of disembarkation |
| | C517 | | M | | LOCATION IDENTIFICATION | |
| | 3225 | | C | an..35 (an5) | Place/location identification | UNECE location code (Rec. 16) of the port, see Part IV, Article 2.03(9) |
| | 1131 | | | an..17 | Code list qualifier | n.a. |
| | 3055 | | | an..3 | Code list responsible agency | n.a. |
| | 3224 | | D[Use 1] | an..256 | Place/location | Full name of the port location |
| | C519 | | C | | RELATED LOCATION ONE IDENTIFICATION | |
| | 3223 | | M | an..25 (an5) | Related place/location one identification | Terminal code, see Part IV, Article 2.03(11) |
| | 1131 | | | an..17 | Code list qualifier | n.a. |
| | 3055 | | | an..3 | Code list responsible agency | n.a. |
| | 3222 | | D[Use 1] | an..70 | Related place/location one | Full name of the terminal |
| | C553 | | C | | RELATED LOCATION TWO IDENTIFICATION | |

| 1 | 2 | 3 | 4 | 5 | 6 | 7 |
|------------|------------|----------|----------|-----------------|---|---|
| | 3233 | | M | an..25 (an5) | Related place/location two identification | Fairway section code, see Part IV, 2.03(10) |
| | 1131 | | | an..17 | Code list qualifier | |
| | 3055 | | | an..3 | Code list responsible agency | n.a. |
| | 3232 | | C | an..70 (an5) | Related place/location two | Fairway section hectometre |
| | 5479 | | | an..3 | Relation | n.a. |
| | | | | | | |
| NAD | DOC | 1 | M | | Travel document details | Travel document details |
| | C002 | | M | | Document/message name | Document/message name |
| | 1001 | | M | n..3 | Document/message name, coded | Document type: '39' Passport '36' Identity card 'SMB' Seaman's book '40' Driving licence (national) '41' Driving licence (international) '483' Visa |
| | 1131 | | | an..17 | Code list qualifier | n.a. |
| | 3055 | | | an..3 | Code list responsible agency, coded | n.a. |
| | 1000 | | C | an..35 | Document name | Type of Visa |
| | C503 | | M | | Document/message details | |

| 1 | 2 | 3 | 4 | 5 | 6 | 7 |
|------------|---------------|----------|----------|--------|---|----------------------------|
| | 1004 | | M | an..35 | Document/message number | Document identifier |
| | 1373 | | | an..3 | Document/message status, coded | n.a. |
| | 1366 | | | an..70 | Document/message source | n.a. |
| | 3453 | | | an..3 | Language, coded | n.a. |
| | 1056 | | | an..9 | Version | n.a. |
| | 1060 | | | an..6 | Revision number | n.a. |
| | 3153 | | | an..3 | Communication channel identifier, coded | n.a. |
| | 1220 | | | n..2 | Number of copies of document required | n.a. |
| | 1218 | | | n..2 | Number of originals of document required | n.a. |
| | | | | | | |
| DOC | DTM | 2 | C | | DATE/TIME/PERIOD | Expiration date |
| | C507 | | | | Date/time/period | Date/time/period |
| | 2005 | | M | an..3 | Date or time or period function code qualifier | '192' |
| | 2380 | | M | an..35 | Date or time period value | Date: CCYYMMDD |
| | 2379 | | M | an..3 | Date or time or period format code | '102' |
| | | | | | | |
| TDT | LOC(1) | 1 | M | | PLACE/LOCATION IDENTIFICATION | Place of issue of document |
| | 3227 | | M | an..3 | Place/location qualifier | '44' |

| 1 | 2 | 3 | 4 | 5 | 6 | 7 |
|---|------|------|---|-------------------|---|---|
| | C517 | | M | | LOCATION IDENTIFICATION | |
| | | 3225 | C | an..35 (an5) | Place/location identification | UNECE location code (Rec. 16), see Part IV, Article 2.03(9) |
| | | 1131 | | an..17 | Code list qualifier | n.a. |
| | | 3055 | | an..3 | Code list responsible agency | n.a. |
| | | 3224 | | an..256 | Place/location | n.a. |
| | C519 | | | | RELATED LOCATION ONE IDENTIFICATION | n.a. |
| | | 3223 | | an..25 | Related place/location one identification | n.a. |
| | | 1131 | | an..17 | Code list qualifier | n.a. |
| | | 3055 | | an..3 | Code list responsible agency | n.a. |
| | | 3222 | | an..70 | Related place/location one | n.a. |
| | C553 | | | | RELATED LOCATION TWO IDENTIFICATION | n.a. |
| | | 3233 | | an..25 | Related place/location two identification | n.a. |
| | | 1131 | | an..17 | Code list qualifier | n.a. |
| | | 3055 | | an..3 | Code list responsible agency | n.a. |
| | | 3232 | | an..70 (an..5) | Related place/location two | n.a. |
| | 5479 | | | an..3 | Relation | n.a. |
| | | | | | | |

| 1 | 2 | 3 | 4 | 5 | 6 | 7 |
|---|------------|----------|----------|--------|--|---|
| | UNT | 0 | M | | MESSAGE TRAILER | End and control of completeness of the message |
| | 0074 | | M | n..6 | Number of segments in the message | |
| | 0062 | | M | an..14 | First 14 positions of the message reference number | First 14 positions of the message reference number |
| | | | | | | |
| | UNZ | | M | | INTERCHANGE TRAILER | End and control of the interchange |
| | 0036 | | M | n..6 | Interchange control count | '1' for number of messages contained in the interchange |
| | 0020 | | M | an..14 | Interchange control reference | First 14 positions of the message reference number |

| Business rules | |
|-----------------------|---|
| D[USE 1] | If the code is XXXXX, then this data-element shall be completed. |
| D[USE 2] | This data-element is mandatory if person requires additional support. |

3. PAXLST message in XML format

In the PAXLST message structure in UN/EDIFACT format, the column 'Description Qualifiers in quotation marks' indicates which information should be provided in a particular data element, including additional restrictions on size and allowed character set.

In the XSD, these fill-in instructions are included in the 'xs:annotation' field of the respective data elements. This field also integrates a subfield 'xs:documentation' which indicates the corresponding field name of the UN/EDIFACT format.

Besides, the instructions which are applicable for the UN/EDIFACT format are also applicable by default in the XSD. If additional information or deviating restrictions are required, it will be provided in this field.

Appendix 1 PAXLST message in XML format, XSD file (source code) (Distributed separately)

ANNEX 14

ERI RESPONSE AND RECEIPT MESSAGE - ERIRSP

1. ERIRSP message

This message shall be used to provide where required answering and response functions to sent messages.

The function of this message is:

- to inform a message issuer that his ERI message has been received by the addressee's application and has been rejected due to errors encountered during its processing in the application;
- to acknowledge to a ERI message issuer the receipt of his message by the addressee's application.

a) Field of application

The application error and acknowledgement message can be used for both national and international applications. It is not dependent on the type of business or industry, neither it is a legal requirement: it is based on business practices related to administration and transport.

b) Principles

An ERI message can first be controlled at system level (e.g. the CONTRL message) to detect syntax errors and to acknowledge its receipt. It shall be then transmitted to the application process to be processed.

When an acknowledgement is necessary an ERIRSP message shall be sent specifying the reasons of acknowledgement. If an error is detected at the application level, which prevents its complete processing, an ERIRSP message shall be sent to the original message issuer providing details of the error(s) encountered. In case of application error, the ERIRSP message shall be transmitted manually.

In case of acknowledgement the ERIRSP message shall be processed automatically or manually, at recipient's discretion.

2. ERI RESPONSE MESSAGE ERIRSP in UN/EDIFACT format

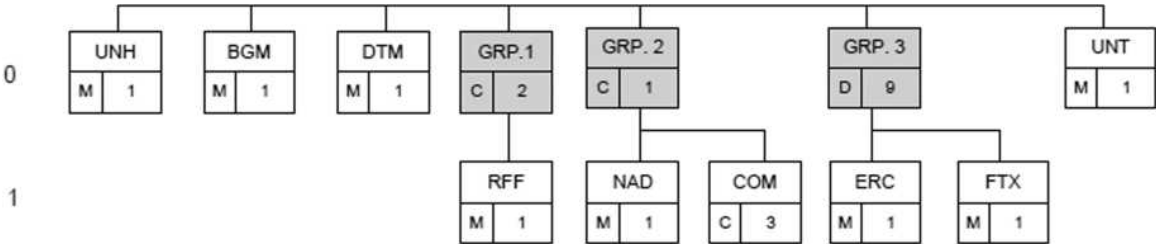
The ERIRSP message is derived from the UN/EDIFACT APERAK message. The response messages to the functions (new, modification or cancellation) of the notification message ERINOT have all the same structure. The response to a 'modification' or a 'cancellation' contains information whether or not the 'modification' or 'cancellation' has been processed by the receiving system. A response is required only if the NAD (1)/COM segment, with qualifier 'EI', contains the mailbox number, or with qualifier 'EM', contains the email address where the response is to be returned to.

- a) Segment index (alphabetical sequence by tag)
- BGM Beginning of message
 - COM Communication contact
 - DTM Date/time/period
 - ERC Application error information
 - FTX Free text
 - NAD Name and address
 - RFF Reference
 - UNH Message header
 - UNT Message trailer
- b) Segment table

| Pos | Tag | Name | S | R |
|------|-----|-------------------------------|------|---|
| | UNB | | M | 1 |
| 0010 | UNH | Message header | M | 1 |
| 0020 | BGM | Beginning of message | M | 1 |
| 0030 | DTM | Date/time/period | M | 1 |
| 0060 | | Segment group 1 | C | 2 |
| 0070 | RFF | Reference | M | 1 |
| 0090 | | Segment group 2 | C | 1 |
| 0100 | NAD | Name and address | M | 1 |
| 0120 | COM | Communication contact | C | 3 |
| 0130 | | Segment group 3 | D[1] | 9 |
| 0140 | ERC | Application error information | M | 1 |
| 0150 | FTX | Free text | M | 1 |
| 0190 | UNT | Message trailer | M | 1 |

| Business rules | |
|----------------|---|
| D[1] | This segment-group is to be used if any application error(s) occur. |

c) Branching diagram



- d) ERIRSP message structure in UN/EDIFACT format
Table 14-1 defines the segments of the ERI response messages.

Table 14-1
ERI response message ERIRSP

| Segment Group | Segment Composite data element (C) Data element TAG | Level | Status | Format | Name | Description Qualifiers in quotation marks |
|---------------|--|----------|----------|------------------|---------------------------------------|--|
| 1 | 2 | 3 | 4 | 5 | 6 | 7 |
| | UNB | 0 | M | | INTERCHANGE HEADER | |
| | S001 | | M | | SYNTAX IDENTIFIER | |
| | 0001 | | M | a4 | Syntax identifier | 'UNOA' Controlling agency |
| | 0002 | | M | n1 | Syntax version number | '2' |
| | S002 | | M | | INTERCHANGE SENDER | |
| | 0004 | | M | an..35 (an25) | Sender identification | Mailbox number or unique name or the unique identifier of a RIS-centre or traffic post |
| | 0007 | | | an..4 | Partner identification code qualifier | n.a. |
| | 0008 | | | an..14 | Address for reverse routing | n.a. |
| | S003 | | M | | INTERCHANGE RECIPIENT | |
| | 0010 | | M | an..35 (an25) | Recipient identification | Mailbox number or unique name or the unique identifier of a RIS-centre or traffic post |
| | 0007 | | | an..4 | Partner identification code qualifier | n.a. |

| 1 | 2 | 3 | 4 | 5 | 6 | 7 |
|---|------------|----------|----------|--------|---|--|
| | 0014 | | | an..14 | Routing address | n.a. |
| | S004 | | M | | DATE/TIME OF PREPARATION | ho |
| | 0017 | | M | n6 | Date | Generation date, YYMMDD |
| | 0019 | | M | n4 | Time | Generation time, HHMM |
| | 0020 | | M | an..14 | Interchange control reference | First 14 positions of the message reference number |
| | S005 | | | | RECIPIENTS REFERENCE, PASSWORD | |
| | 0022 | | | an..14 | Recipient's reference/password | n.a. |
| | 0025 | | | an2 | Recipient's reference, password qualifier | n.a. |
| | 0026 | | | an..14 | Application reference | n.a. |
| | 0029 | | | a1 | Processing priority code | n.a. |
| | 0031 | | | n1 | Acknowledgement request | n.a. |
| | 0032 | | | an..35 | Communications agreement id | n.a. |
| | 0035 | | C | n1 | Test indicator | '1' = the interchange relates to a test message |
| | | | | | | |
| | UNH | 0 | M | | MESSAGE HEADER | Identification, specification and heading of a message |
| | 0062 | | M | an..14 | Message reference number | First 14 positions of the message reference number |
| | S009 | | M | | MESSAGE IDENTIFIER | |
| | 0065 | | M | an..6 | Message type | 'APERAK', message type |

| 1 | 2 | 3 | 4 | 5 | 6 | 7 |
|---|------------|----------|----------|--------|------------------------------|---|
| | 0052 | | M | an..3 | Message version number | 'O' |
| | 0054 | | M | an..3 | Message release number | '98B' |
| | 0051 | | M | an..2 | Controlling agency | 'UN' |
| | 0057 | | M | an..6 | Association assigned code | 'ERI13', ERI Version 1.3 |
| | 0068 | | | an..35 | Common access reference | n.a. |
| | S010 | | | | STATUS OF THE TRANSFER | |
| | 0070 | | | n..2 | Sequence of transfers | n.a. |
| | 0073 | | | a1 | First and last transfer | n.a. |
| | | | | | | |
| | BGM | 0 | M | | BEGINNING OF MESSAGE | Identification of the type and function of the message |
| | C002 | | M | | DOCUMENT/MESSAGE NAME | |
| | 1001 | | M | an..3 | Document/message name code | Type of message received for which this message contains the acknowledgement information: 'VES', from vessel to RIS authority message 'CAR', from carrier to RIS authority message 'PAS', passage report from RIS authority to RIS authority |
| | 1131 | | | an..3 | Code list qualifier | n.a. |
| | 3055 | | | an..3 | Code list responsible agency | n.a. |
| | 1000 | | | an..35 | Document/message name | n.a. |

| 1 | 2 | 3 | 4 | 5 | 6 | 7 |
|---|------------|----------|----------|---------------|--|---|
| | C106 | | M | | DOCUMENT/MESSAGE IDENTIFICATION | |
| | 1004 | | M | an..35 (an15) | Document identifier | Message reference number. This number shall be as unique as possible, both for sender and for receiver. If a message is received and then passed on to another receiver, the original message reference number shall be used. The transitional system shall in this case not generate another message reference number. |
| | 1056 | | | an..9 | Version | n.a. |
| | 1060 | | | an..6 | Revision number | n.a. |
| | 1225 | | M | an..3 | Message function code | Function of message: '9' = new message (original) |
| | 4343 | | M | an..3 | Response type code | 'AP' accepted 'RE' rejected. The notification is rejected if the transport is already arrived at its destination. |
| | | | | | | |
| | DTM | 1 | M | | DATE/TIME/PERIOD | The date/time that the receiving application encounters the approval or rejection |
| | C507 | | M | | DATE/TIME/PERIOD | |
| | 2005 | | M | an..3 | Date or time or period function code qualifier | '137' for document/message date/time |
| | 2380 | | M | an..35 | Date or time period value | Value of arrival time: YYMMDDHHMM |
| | 2379 | | M | an..3 | Date or time or period format code | '201' for YYMMDDHHMM |

| 1 | 2 | 3 | 4 | 5 | 6 | 7 |
|--------------|----------------|----------|----------|--------|--------------------------|--|
| | | | | | | |
| GRP 1 | RFF (1) | 1 | C | | REFERENCE | Reference to previous message |
| | C506 | | M | | REFERENCE | |
| | 1153 | | M | an..3 | Reference qualifier | 'ACW' for reference number to previous message |
| | 1154 | | M | an..35 | Reference number | Message reference number from BGM, TAG 1004 of the message this message refers to |
| | 1156 | | | an..6 | Line number | n.a. |
| | 4000 | | | an..35 | Reference version number | n.a. |
| | 1060 | | | an..6 | Revision number | n.a. |
| | | | | | | |
| GRP 1 | RFF (2) | 1 | C | | REFERENCE | Reference to transaction/invoice number |
| | C506 | | M | | REFERENCE | |
| | 1153 | | M | an..3 | Reference qualifier | 'AAY' for reference number to transaction |
| | 1154 | | M | an..35 | Reference number | Reference number assigned by the receiving authority. The reference number shall start with the UN country code followed by three positions for the assigning system. The final part is the actual reference number. |
| | 1156 | | | an..6 | Line number | n.a. |
| | 4000 | | | an..35 | Reference version number | n.a. |
| | 1060 | | | an..6 | Revision number | n.a. |

| 1 | 2 | 3 | 4 | 5 | 6 | 7 |
|--------------|------------|----------|----------|--------|-------------------------------|--|
| | | | | | | |
| GRP 2 | NAD | 1 | M | | NAME and ADDRESS | Name and address of the sender of the notification |
| | 3035 | | M | an..3 | Party function code qualifier | 'MS' for message sender |
| | C082 | | | | PARTY IDENTIFICATION DETAILS | n.a. |
| | | 3039 | | an..35 | Party identification | n.a. |
| | | 1131 | | an..3 | Code list qualifier | n.a. |
| | | 3055 | | an..3 | Code list responsible agency | n.a. |
| | C058 | | | | NAME AND ADDRESS | n.a. |
| | | 3124 | | an..35 | Name and address line | n.a. |
| | | 3124 | | an..35 | Name and address line | n.a. |
| | | 3124 | | an..35 | Name and address line | n.a. |
| | | 3124 | | an..35 | Name and address line | n.a. |
| | | 3124 | | an..35 | Name and address line | n.a. |
| | C080 | | M | | PARTY NAME | |
| | | 3036 | M | an..35 | Party name | Name of the sender of the notification |
| | | 3036 | | an..35 | Party name | n.a. |
| | | 3036 | | an..35 | Party name | n.a. |
| | | 3036 | | an..35 | Party name | n.a. |
| | | 3036 | | an..35 | Party name | n.a. |

| 1 | 2 | 3 | 4 | 5 | 6 | 7 |
|--------------|------------|----------|----------|--------|--------------------------------------|--|
| | 3045 | | | an..3 | Party name format, coded | n.a. |
| | C059 | | C | | STREET | |
| | 3042 | | M | an..35 | Street and number/PO box | Street and number or post office box |
| | 3042 | | | an..35 | Street and number/PO box | n.a. |
| | 3042 | | | an..35 | Street and number/PO box | n.a. |
| | 3042 | | | an..35 | Street and number/PO box | n.a. |
| | 3164 | | C | an..35 | City name | City |
| | 3229 | | | an..9 | Country sub-entity identification | n.a. |
| | 3251 | | C | an..9 | Postcode identification | Postal identification code |
| | 3207 | | C | an..3 | Country | ISO 3166-1 two alpha country code, see Part IV, Article 2.03(8) |
| NAD | COM | 2 | C | | COMMUNICATION CONTACT | Sender communication contact details (maximum 3 times) |
| | C076 | | M | | COMMUNICATION CONTACT | |
| | 3148 | | M | an..70 | Communication number | Communication number |
| | 3155 | | M | an..3 | Communication channel qualifier | 'TE' for telephone number 'FX' for fax number 'EM' for Email address |
| | | | | | | |
| GRP 3 | ERC | 1 | C | | APPLICATION ERROR INFORMATION | |

| 1 | 2 | 3 | 4 | 5 | 6 | 7 |
|------------|------------|----------|----------|--------|------------------------------|---|
| | C901 | | M | | APPLICATION ERROR DETAIL | |
| | 9321 | | M | an..8 | Application error | Application error code |
| | 1131 | | | an..3 | Code list qualifier | n.a. |
| | 3055 | | | an..3 | Code list responsible agency | n.a. |
| | | | | | | |
| ERC | FTX | 2 | M | | FREE TEXT | To communicate the reason for rejection |
| | 4451 | | M | an..3 | Text subject code qualifier | 'AAO' for free text error description |
| | 4453 | | | an..3 | Free text function code | n.a. |
| | C107 | | | | TEXT REFERENCE | |
| | 4441 | | | an..17 | Free text identification | n.a. |
| | 1131 | | | an..3 | Code list qualifier | n.a. |
| | 3055 | | | an..3 | Code list responsible agency | n.a. |
| | C108 | | C | | TEXT LITERAL | Text |
| | 4440 | | M | an..70 | Free text | Further description |
| | 4440 | | C | an..70 | Free text | Further description |
| | 4440 | | C | an..70 | Free text | Further description |
| | 4440 | | C | an..70 | Free text | Further description |
| | 4440 | | C | an..70 | Free text | Further description |
| | 3453 | | | an..3 | Language, coded | n.a. |

| 1 | 2 | 3 | 4 | 5 | 6 | 7 |
|---|------------|---|----------|--------|---------------------------------|---|
| | 4447 | | | an..3 | Text formatting, coded | n.a. |
| | | | | | | |
| | UNT | | M | | MESSAGE TRAILER | End and control of completeness of the message |
| | 0074 | | M | n..6 | Number of segments in a message | |
| | 0062 | | M | an..14 | Message reference number | First 14 positions of the message reference number |
| | | | | | | |
| | UNZ | | M | | INTERCHANGE TRAILER | End and control of the interchange |
| | 0036 | | M | n..6 | Interchange control count | '1' for number of messages contained in the interchange |
| | 0020 | | M | an..14 | Interchange control reference | First 14 positions of the message reference number |

3. XML format of ERIRSP message

Both XSD and UN/EDIFACT formats of the ERIRSP message are functionally equivalent and share the same business rules.

In the ERIRSP message structure in UN/EDIFACT format, the column 'Description Qualifiers in quotation marks' indicates which information should be provided in a particular data element, including additional restrictions on size and allowed character set. In the XSD, these fill-in instructions are included in the 'xs:annotation' field of the respective data elements. This field also integrates a subfield 'xs:documentation' which indicates the corresponding field name of the UN/EDIFACT format. Besides, the instructions which are applicable for the UN/EDIFACT format are also applicable by default in the XSD. If additional information or deviating restrictions are required, it will be provided in this field.

The choice to use one or the other format is conditioned by the format of the original message. When a user sends an ERI message using XML format, he expects to receive an ERIRSP message using XML format in return, and vice versa, when he sends an ERI message using UN/EDIFACT format, he expects to receive an ERIRSP message using UN/EDIFACT format.

Appendix 1 XML format of ERIRSP message, XSD file (source code) (Distributed separately)

4. Error codes

For data attribute: MESSAGE **REFERENCE ANSWERED TO ERROR DESCR CODE**, the error codes defined in the tables 14-3, 14-4, 14-5 and 14-6 shall be used in segment ERC:

- Data element 9321 (EDIFACT).
- Data element <ErrorCode> (XML)

The purpose of the error codes is to inform the sender why a message has not been accepted or processed by the receiving party. The causes can be very diverse and cannot be always solved directly/indirectly by the sender. Despite this, it is important that a clear message is returned so that either the sender or the software supplier can determine the cause. The categories "Technical errors" and "Data invalid" are used when there is something wrong with the message structure/syntax/codes. When these error categories are returned, the sender should contact the supplier of the reporting software. The category "Invalid Reference Data" relates to the use of invalid reference data (see Annex 12 for the details of the reference data to be used). The last category is "Business violation" and is often related to invalid input or overwrite maximum dimensions, cones etc. Often the boatmaster can determine the cause of the error based on the subcategory returned.

- a) Presentation of the categories of codes
The codes are divided in four categories and subcategories

Table 14-2
Categories of codes

| Code | Groups |
|-------------|------------------------|
| 1 | Technical errors |
| 2 | Data invalid |
| 3 | Invalid Reference Data |
| 4 | Business violation |

- b) Presentation of the subcategories of codes

Table 14-3
Subcategory 1

| Code | Technical errors |
|-------------|---|
| 101 | Invalid Endpoint |
| 102 | XML format not respected or XSD not respected |
| 104 | Message not supported |
| 105 | Sender not Authorized |
| 106 | UN/EDIFACT format not respected |
| 107 | Invalid message version |
| 108 | Syntax version or level not supported |
| 109 | Character invalid as service character |
| 110 | Test indicator not supported |
| 112 | Invalid decimal notation |
| 113 | Invalid service character(s) (UN/EDIFACT format only) |
| 114 | Too many segment group repetitions (UN/EDIFACT format only) |
| 199 | Unspecified error |

Table 14-4
Subcategory 2

| Code | Data invalid |
|-------------|---|
| 201 | Message sequence invalid |
| 202 | Previous message not received |
| 203 | #PassengersOnBoard > #PersonsOnBoard |
| 204 | ETD >= ETA (for a voyage) |
| 205 | ETA >= ETD (for visiting a port) |
| 206 | Transport Mode not indicated |
| 207 | Transport Means not indicated |
| 208 | Navigation mode incorrect or not provided |
| 209 | Duplicate notification/request for vessel |
| 210 | Vessel tonnage exceed |
| 299 | Other error |

Table 14-5
Subcategory 3

| Code | Invalid Rerefence Data |
|-------------|-----------------------------------|
| 301 | Invalid Location information-code |
| 302 | Invalid Dangerous goods-code |
| 303 | Invalid Non-Dangerous goods-code |
| 304 | Invalid Vessel/Convoy-Type |
| 305 | Invalid Container-Type |
| 399 | Other |

Table 14-6
Subcategory 4

| Code | Business violation |
|-------------|---|
| 403 | Number of blue cones not indicated |
| 410 | Total convoy dimensions not allowed |
| 415 | Actual draught not allowed |
| 419 | Max. persons on board capacity exceeded |
| 448 | Maximum tonnage exceeded |
| 470 | Container-Type invalid or does not exist |
| 475 | Proper shipping name invalid or not indicated |
| 476 | No indication regarding an LNG system on-board |
| 478 | Actual aircraft not allowed |
| 479 | Actual length not allowed |
| 480 | Actual width not allowed |
| 483 | ENI number is invalid or not indicated |
| 484 | ENI number is not supported |
| 485 | IMO number invalid or not indicated |
| 486 | IMO number is not supported |
| 487 | Port of departure is invalid or not indicated |
| 488 | Next port of call is invalid or not indicated |
| 489 | Port of destination is invalid or not indicated |
| 490 | Port of loading is invalid or not indicated |
| 491 | Port of discharge is invalid or not indicated |
| 492 | Passage point is invalid or not indicated |
| 493 | Route point is invalid or not indicated |
| 499 | Other |

ANNEX 15
BERTH MANAGEMENT PORT NOTIFICATION - BERMAN

1. Necessary data in accordance with the FAL convention

In the FAL General Declaration¹, public authorities shall not require more than the following information:

1. name and description of the ship
2. nationality of ship (country of the inspection body that issued the last vessel certificate)
3. particulars regarding registry
4. particulars regarding tonnage
5. name of master
6. name and address of ship's agent
7. brief description of cargo
8. number of crew
9. number of passengers
10. brief particulars of voyage
11. date and time of arrival, date of departure
12. port of arrival or departure
13. position of the ship in the port
14. the ships requirements in terms of waste and residue reception facilities
15. purpose of call

In addition the following particulars are to be included for ISPS² purposes:

16. name of the ships security officer
17. security certificate (ISSC) number and authority

1 IMO Compendium on facilitation and electronic business, FAL.5/Cic.35, 9 September 2011; referred to in the Annex to Directive 2010/65/EU of the European Parliament and of the Council of 20 October 2010 on reporting formalities for ships arriving in and/or departing from ports of the Member States and repealing Directive 2002/6/EC (OJ L 283, 29.10.2010, p. 1).

2 The International Ship and Port Facility Security Code (ISPS code) was adopted by the IMO in 2002; it is mandatory under the SOLAS Convention entering in force on 1 July 2004.

18. security level at which ship is operating level 1, 2 or 3
 19. information on number of persons and vehicles
2. Message function
- a) Functional definition

The BERMAN message is a message from a carrier, its agent or a vessel to the responsible port authority, requesting a berth, giving details of the call, ship, berth requirements and expected operations¹. It is based on the EDIFACT BERMAN message as published in the UN/EDIFACT D 04B directory.
 - b) Field of application

The message is based on and supports the implementation by means of EDI of the following international and European legislation:

 - i) the IMO FAL Form 1 (as also contained in the IMO Compendium on Facilitation and electronic business, document FAL.5/Circ.15, dated 19 February 2001 and also contained in Directive 2010/65/EU of the European Parliament and of the Council²);
 - ii) International ship and port facility security (ISPS) code, adopted by the Conference of Contracting Governments of the International Maritime Organisation (IMO) on 12 December 2002, in the amendments to the annex to the International Convention of Safety of Life at Sea (SOLAS), 1974 and Regulation (EC) No 725/2004.
 - c) Message principles

The following principles shall apply to the BERMAN message as defined in these technical specifications for the purpose of electronic ship reporting in inland navigation:

 1. A message shall contain information on only one means of transport/conveyance.
 2. One message shall relate to one visit of a ship to one port of call.
 3. The visit of the vessel shall be identified by a unique call reference number that is issued by or on behalf of the authority in the port (e.g. the port authority or the customs authority).
 4. The message shall incorporate the information related to applicable requirements regarding the notification of a ship to a port. It shall support one request for the ship — be it for entering the port, berthing on arrival of the ship, leaving the berth on departure of the ship or shifting of berths for the ship within the port or for only transiting through the port area.

¹ In accordance with the IMO Compendium, the BERMAN message can be used as a substitute for the IMO General Declaration (CUS- REP) for the purpose of the announcement of the expected arrival of a ship in a certain port.

² Directive 2010/65/EU of the European Parliament and of the Council of 20 October 2010 on reporting formalities for ships arriving in and/or departing from ports of the Member States and repealing Directive 2002/6/EC (OJ L 283, 29.10.2010, p. 1).

5. The arrival notification shall contain all details regarding the movement of the ship from outside the port area to the first berth in the port area. The additional services to be arranged for arrival at the first berth (e.g. arrangement of pilots, VTS, tugboats, and linesmen) may be specified. The ETA (estimated time of arrival) at the entry point and previous port of call of the ship shall be given.
 6. A shift berthing request shall contain all details as to the movement from one berth to the next berth in the same port area. The additional services to be arranged (e.g. arrangement of tugboats, pilots or linesman) may be specified for each berth separately. The ETD (estimated time of departure) for the first berth is mandatory. The shift berthing request shall further contain the other berths that are planned to be visited during the ship's call, including the ETA at those berths.
 7. A departure request shall contain all details related to the departure of the ship from the (last) berth in the port area. Additional services to be arranged for departure from the berth (e.g. arrangement of tugboats, pilots or linesman) may be specified. The ETD from the berth and the next port of call of the ship shall be given upon departure.
 8. The message shall cater for the provision of sending a replacement or a cancellation of a previously sent original message.
 9. The message content shall be uniquely identified by means of the message reference (in BGM 1004) and the message sender identification (in NAD(MS) 3039). All other identifying data, such as the unique ship ID of the ship or the voyage number, are secondary references. The sending of replacements and updates also makes use of this principle.
3. Message structure
- a) Segment index (alphabetical sequence by tag)
 - BGM Beginning of message
 - COM Communication contact
 - CTA Contact information
 - DTM Date/time/period
 - FTX Free text
 - GDS Nature of cargo
 - HAN Handling instructions
 - LOC Place/location identification
 - MEA Measurements
 - NAD Name and address

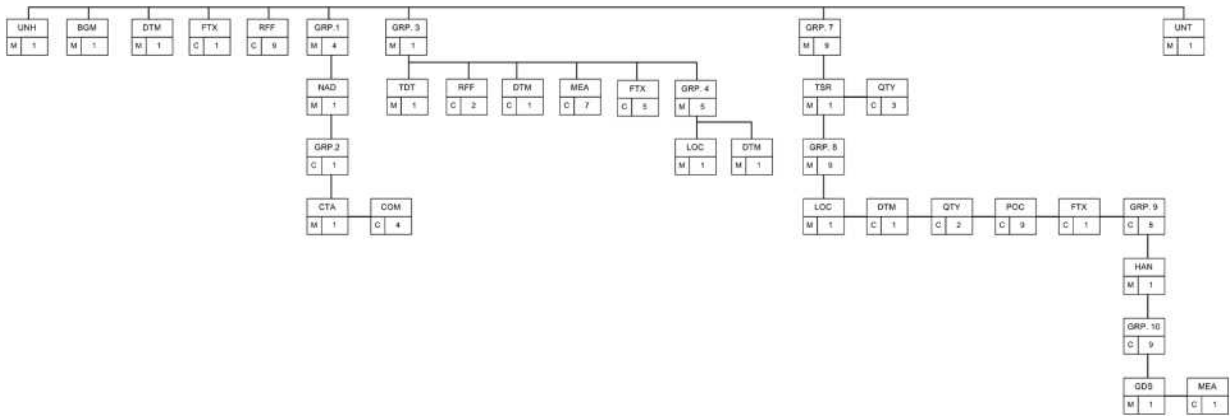
POC Purpose of call
 QTY Quantity
 RFF Reference
 TDT Transport information
 TSR Transport service requirements
 UNH Message header
 UNT Message Trailer

b) Segment table

| Pos | Tag | Name | S | R |
|------|-----|-------------------------------|---|---|
| | UNA | | C | 1 |
| | UNB | | M | 1 |
| 0010 | UNH | Message header | M | 1 |
| 0020 | BGM | Beginning of message | M | 1 |
| 0030 | DTM | Date/time/period | M | 1 |
| 0040 | FTX | Free text | C | 1 |
| 0050 | RFF | Reference | C | 9 |
| 0070 | | Segment Group 1 | M | 4 |
| 0080 | NAD | Name and address | M | 1 |
| 0090 | | Segment Group 2 | C | 1 |
| 0100 | CTA | Contact information | M | 1 |
| 0110 | COM | Communication contact | C | 4 |
| 0120 | | Segment Group 3 | M | 1 |
| 0130 | TDT | Transport information | M | 1 |
| 0140 | RFF | Reference | C | 2 |
| 0150 | DTM | Date/time/period | C | 1 |
| 0160 | MEA | Measurements | C | 7 |
| 0170 | FTX | Free text | C | 9 |
| 0190 | | Segment Group 4 | M | 5 |
| 0200 | LOC | Place/location identification | M | 1 |

| Pos | Tag | Name | S | R |
|------|-----|--------------------------------|---|---|
| 0210 | DTM | Date/time/period | M | 1 |
| 0300 | | Segment Group 7 | M | 9 |
| 0310 | TSR | Transport service requirements | M | 1 |
| 0320 | QTY | Quantity | C | 3 |
| 0340 | | Segment Group 8 | M | 9 |
| 0350 | LOC | Place/location identification | M | 1 |
| 0370 | DTM | Date/time/period | C | 1 |
| 0380 | QTY | Quantity | C | 2 |
| 0390 | POC | Purpose of call | C | 9 |
| 0400 | FTX | Free text | C | 1 |
| 0410 | | Segment Group 9: HAN | C | 8 |
| 0420 | HAN | Handling instructions | M | 1 |
| 0440 | | Segment Group 10: GDS | C | 9 |
| 0450 | GDS | Nature of cargo | M | 1 |
| 0470 | MEA | Measurements | C | 1 |
| 0500 | UNT | Message Trailer | M | 1 |

c) Branching diagram



The pre-arrival notification message format for the berth management message is as follows:

| Segment Group | Segment Composite data element (C) Data element TAG | Level | Status | Format | Name | Description Qualifiers in quotation marks |
|---------------|---|-------|----------|--------|--|---|
| 1 | 2 | 3 | 4 | 5 | 6 | 7 |
| | UNA | | C | | SERVICE STRING ADVISE | |
| | | | M | an1 | Component data element separator | : |
| | | | M | an1 | Segment tag and data element separator | + |
| | | | M | an1 | Decimal notation | . |
| | | | M | an1 | Release indicator | ? |
| | | | M | an1 | Reserved future use | <i>Space</i> |
| | | | M | an1 | Segment terminator | ' |
| | | | | | <i>Advised string: UNA:+.? '</i> | <i>6 characters</i> |
| | UNB | | M | | INTERCHANGE HEADER | |
| | S001 | | M | | SYNTAX IDENTIFIER | |
| | 0001 | | M | a4 | Syntax identifier | 'UNOC' Controlling agency |
| | 0002 | | M | n1 | Syntax version number | '2' |
| | S002 | | M | | INTERCHANGE SENDER | |

| 1 | 2 | 3 | 4 | 5 | 6 | 7 |
|---|------|---|---|------------------|---|--|
| | 0004 | | M | an..35 (an25) | Sender identification | Mailbox number or unique name or the unique identifier of a RIS-centre or traffic post |
| | 0007 | | | an..4 | Partner identification code qualifier | n.a. |
| | 0008 | | | an..14 | Address for reverse routing | n.a. |
| | S003 | | M | | INTERCHANGE RECIPIENT | |
| | 0010 | | M | an..35 (an25) | Recipient identification | Mailbox number or unique name or the unique identifier of a RIS-centre or traffic post |
| | 0007 | | C | an..4 | Partner identification code qualifier | n.a. |
| | 0014 | | C | an..14 | Routing address | n.a. |
| | S004 | | M | | DATE/TIME OF PREPARATION | |
| | 0017 | | M | n6 | Date | Generation date, YYMMDD |
| | 0019 | | M | n4 | Time | Generation time, HHMM |
| | 0020 | | M | an..14 | Interchange reference identification | First 14 positions of the message reference number |
| | S005 | | C | | RECIPIENTS REFERENCE, PASSWORD | n.a. |
| | 0022 | | | an..14 | Recipient's reference/password | n.a. |
| | 0025 | | | an2 | Recipient's reference, password qualifier | n.a. |
| | 0026 | | | an..14 | Application reference | n.a. |
| | 0029 | | | a1 | Processing priority code | n.a. |
| | 0031 | | C | n1 | Acknowledgement request | '1' = Sender requests acknowledgement, i.e. UNB and UNZ segments received and identified |

| 1 | 2 | 3 | 4 | 5 | 6 | 7 |
|---|------------|------|----------|--------|---|--|
| | 0032 | | | an..35 | Communications agreement id | n.a. |
| | 0035 | | | C | Test indicator | Test indicator '1' = the interchange relates to a test message |
| | | | | | | |
| | UNH | | M | | IDENTIFICATION, SPECIFICATION AND HEADING OF A MESSAGE | |
| | 0062 | | M | an..14 | Message reference number | First 14 positions of the message number |
| | S009 | | M | | MESSAGE IDENTIFIER | Message identification |
| | | 0065 | M | an..6 | Message type | 'BERMAN', message type |
| | | 0052 | M | an..3 | Message version number | 'D', message version number |
| | | 0054 | M | an..3 | Message release number | '05B', message release number |
| | | 0051 | M | an..2 | Controlling agency | 'UN', controlling agency |
| | | 0057 | M | an..6 | Association assigned code | 'ERI13', ERI version 1.3 |
| | | 0068 | C | an..35 | Common access reference | Reference to all messages related to one common file |
| | S010 | | | | STATUS OF THE TRANSFER | |
| | | 0070 | | n..2 | Sequence of transfers | n.a. |
| | | 0073 | | a1 | First and last transfer | n.a. |
| | | | | | | |
| | BGM | | M | | BEGINNING OF MESSAGE | Identification of the type and function of the message |

| 1 | 2 | 3 | 4 | 5 | 6 | 7 |
|---|------|---|---|--------|---------------------------------|--|
| | C002 | | | | DOCUMENT/MESSAGE NAME | |
| | 1001 | | M | an..3 | Document/message name code | <p>Message Type:</p> <p>'22' = Final transmission (End of voyage)</p> <p>'23' Status information Information regarding the status of a related message.</p> <p>'185' Conveyance declaration (arrival) Declaration to the public authority upon arrival of the conveyance.</p> <p>'186' Conveyance declaration (departure) Declaration to the public authority upon departure of the conveyance.</p> <p>'187' Conveyance declaration (combined) Combined declaration of arrival and departure to the public authority.</p> <p>'318' Application for shifting from the designated place in port Document to apply for shifting from the designated place in port.</p> <p>'282' Modification of existing message Requesting a change to an existing message.</p> <p><i>Note: '187' to be used as continued voyage indicator</i></p> |
| | 1131 | | | an..17 | Code list qualifier | n.a. |
| | 3055 | | | an..3 | Code list responsible agency | n.a. |
| | 1000 | | | an..35 | Document/message name | n.a. |
| | C106 | | M | | DOCUMENT/MESSAGE IDENTIFICATION | |
| | 1004 | | M | an..35 | Document identifier | Use max. (an15) for message reference number |

| 1 | 2 | 3 | 4 | 5 | 6 | 7 |
|---|------------|---|----------|--------|---|---|
| | 1056 | | | an..9 | Version | |
| | 1060 | | | an..6 | Revision number | |
| | 1225 | | M | an..3 | Message function code | Function of message: '9' = new message, original '5' = modification message by replacement '1' = cancellation '22' = Final transmission (End of voyage) '150' = Interruption of voyage' '151' = Restart of voyage |
| | 4343 | | | an..3 | Response type code | 'QA' |
| | DTM | | M | | DATE/TIME/PERIOD | |
| | C507 | | M | | DATE/TIME/PERIOD | |
| | 2005 | | M | an..3 | Date or time or period function code qualifier | '137' Date of preparation |
| | 2380 | | M | an..35 | Date or time period value | Date: CCYMMDD |
| | 2379 | | M | an..3 | Date or time or period format code | '102' For CCYMMDDHHMM use '203' |
| | FTX | | C | | FREE TEXT | |
| | 4451 | | M | an..3 | Text subject code qualifier | 'CHG' = Change information |

| 1 | 2 | 3 | 4 | 5 | 6 | 7 |
|---|------|---|---|---------|------------------------------|---|
| | 4453 | | | an..3 | Free text function code | n.a. |
| | C107 | | | | TEXT REFERENCE | |
| | 4441 | | C | an..17 | Free text identification | General information on the call of the vessel 'CAM' = mistakes in previous message 'CAN' = cancelled because of cargo change 'GIV' = General info vessel |
| | 1131 | | | an..17 | Code list qualifier | n.a. |
| | 3055 | | | an..3 | Code list responsible agency | n.a. |
| | C108 | | C | | | |
| | 4440 | | C | an..512 | Free text | Free text: Vessel defects info (vessel, nautical equipment, cargo handling, protruding parts, fire, overheating, smoke) |
| | 4440 | | | an..512 | Free text | n.a. |
| | 4440 | | | an..512 | Free text | n.a. |
| | 4440 | | | an..512 | Free text | n.a. |
| | 4440 | | | an..512 | Free text | n.a. |
| | 3453 | | | an..3 | Language, coded | n.a. |
| | 4447 | | | an..3 | Text formatting, coded | n.a. |
| | | | | | | |

| 1 | 2 | 3 | 4 | 5 | 6 | 7 |
|---|------------|---|----------|--------|--------------------------|--|
| | RFF | | C | | REFERENCE | Reference to the message which is changed, mandatory if the message is a modification message |
| | C506 | | M | | REFERENCE | |
| | 1153 | | M | an..3 | Reference qualifier | 'ACW' Reference to previous message |
| | 1154 | | M | an..70 | Reference number | Use (an15) message reference number of the BGM, tag 1004 of the message this current message refers to |
| | 1156 | | | an..6 | Line number | n.a. |
| | 4000 | | | an..35 | Reference version number | n.a. |
| | 1060 | | | an..6 | Revision number | n.a. |
| | | | | | | |
| | RFF | | C | | REFERENCE | Reference information |
| | C506 | | M | | REFERENCE | Only if known |
| | 1153 | | M | an..3 | Reference qualifier | 'ATZ' Ship's stay reference number 'GDN' General Declaration number 'AAE' Goods declaration number |
| | 1154 | | M | an..70 | Reference identifier | Reference number or declaration number |
| | 1156 | | | an..6 | Line number | n.a. |
| | 4000 | | | an..35 | Reference version number | n.a. |
| | 1060 | | | an..6 | Revision number | n.a. |

| 1 | 2 | 3 | 4 | 5 | 6 | 7 |
|-----------------|------------|---|----------|--------|--------------------------|---|
| | RFF | | C | | REFERENCE | REFERENCE INFORMATION |
| | C506 | | M | | REFERENCE | |
| | 1153 | | M | an..3 | Reference qualifier | 'EPC' = Electronic port clearance (single window) 'ACE' Related document number 'EPC' Referenced document is sent via EDI and an EPC application 'ROB' Referenced document is available but remains on board |
| | 1154 | | M | an..70 | Reference identifier | '799' Ship's stores declaration '797' Maritime declaration of health '745' Passenger list '744' Crew's effects declaration '250' Crew list declaration '85' Cargo declaration |
| | 1156 | | | an..6 | Line number | n.a. |
| | 4000 | | | an..35 | Reference version number | n.a. |
| | 1060 | | | an..6 | Revision number | n.a. |
| | | | | | | |
| <i>NAD Gr 1</i> | NAD | | M | | Name and address | |

| 1 | 2 | 3 | 4 | 5 | 6 | 7 |
|---|------|---|---|--------|-------------------------------|---|
| | 3035 | | M | an..3 | Party function code qualifier | Sender, carrier's agent and/or vessel master are mandatory Name type: 'MS' Message sender 'CG' Carrier's agent 'CPE' Vessel captain (master) 'AM' Authorised official (security officer) |
| | C082 | | C | | PARTY IDENTIFICATION DETAILS | Code if known at receiver, otherwise other fields |
| | 3039 | | M | an..35 | Party identification | EAN number |
| | 1131 | | | an..17 | Code list qualifier | n.a |
| | 3055 | | | an..3 | Code list responsible agency | n.a |
| | C058 | | | | NAME AND ADDRESS | n.a. |
| | 3124 | | | an..35 | Name and address line | n.a. |
| | 3124 | | | an..35 | Name and address line | n.a. |
| | 3124 | | | an..35 | Name and address line | n.a. |
| | 3124 | | | an..35 | Name and address line | n.a. |
| | 3124 | | | an..35 | Name and address line | n.a. |
| | C080 | | | | PARTY NAME | n.a. |
| | 3036 | | | an..35 | Party name | n.a. |
| | 3036 | | | an..35 | Party name | n.a. |
| | 3036 | | | an..35 | Party name | n.a. |

| 1 | 2 | 3 | 4 | 5 | 6 | 7 |
|-----------------|------------|---|----------|------------|----------------------------|---|
| | 3036 | | | an..35 | Party name | n.a. |
| | 3036 | | | an..35 | Party name | n.a. |
| | 3045 | | | an..3 | Party name format, coded | n.a. |
| | C059 | | | | STREET | n.a. |
| | 3042 | | | an..35 | Street and number/PO box | n.a. |
| | 3042 | | | an..35 | Street and number/PO box | n.a. |
| | 3042 | | | an..35 | Street and number/PO box | n.a. |
| | 3042 | | | an..35 | Street and number/PO box | n.a. |
| | 3164 | | | an..35 | City Name | n.a. |
| | C819 | | | | Country sub-entity details | n.a. |
| | 3229 | | | an..9 | n.a. | n.a. |
| | 1132 | | | an..17 | n.a. | n.a. |
| | 3055 | | | an..3 | n.a. | n.a. |
| | 3228 | | | an..70 | n.a. | n.a. |
| | 3251 | | C | an..17 | Postcode identification | Postal identification code |
| | 3207 | | C | an..3 | Country | ISO 3166-1 two digit alpha country code, see Part IV, Article 2.03(8) |
| | | | | | | |
| <i>NAD Gr 2</i> | CTA | | M | NAD | CONTACT INFORMATION | Sender contact details |

| 1 | 2 | 3 | 4 | 5 | 6 | 7 |
|-----------------|------------|---|----------|---------------------|---------------------------------------|---|
| | 3139 | | M | an..3 | Contact function | 'IC' = Information contact |
| | C056 | | | | DEPARTMENT OR EMPLOYEE DETAILS | |
| | 3413 | | | an..17 | Department or employee identification | n.a. |
| | 3412 | | C | an..35 | Department or employee | Contact person, name or function |
| | | | | | | |
| <i>CTA</i> | COM | | C | NAD/ CTA | COMMUNICATION CONTACT | Sender communication contact details |
| | C076 | | | | COMMUNICATION CONTACT | |
| | 3148 | | M | an..512 | Communication number | Communication number |
| | 3155 | | M | an..3 | Communication channel qualifier | 'TE' for telephone number 'FX' for fax number 'EM' for email address 'EI' for EDI mailbox number (EDI number or email address for NAD 1 is mandatory if a response in the form of an APERAK message is requested for. If no response is requested, the EDI number and email address is not to be used). |
| | | | | | | |
| <i>TDT Gr 3</i> | TDT | | M | | TRANSPORT INFORMATION | Specification of the means of transport, the naming vessel within a convoy (a single vessel without barge is also a convoy in this context) |
| | 8051 | | M | an..3 | Transport stage code qualifier | '20' for main carriage transport |

| 1 | 2 | 3 | 4 | 5 | 6 | 7 |
|---|------|---|---|--------|--|---|
| | 8028 | | M | an..17 | Conveyance reference number | Voyage number, defined by sender of the message |
| | C220 | | M | | MODE OF TRANSPORT | |
| | 8067 | | M | an..3 | Mode of transport, coded | '8' for inland water transport '1' for maritime transport see UNECE Rec. 19 |
| | 8066 | | | an..17 | Mode of transport | n.a. |
| | C228 | | M | | TRANSPORT MEANS | |
| | 8179 | | M | an..8 | Type of means of transport identification, convoy type | Code for ship and convoy types of means of transport from UN/CEFACT Rec. 28, see Part IV, Article 2.03(1) |
| | 8178 | | | an..17 | Type of means of transport | n.a. |
| | C040 | | | | CARRIER | n.a. |
| | 3127 | | | an..17 | Carrier identification | n.a. |
| | 1131 | | | an..17 | Code list qualifier | n.a. |
| | 3055 | | | an..3 | Code list responsible agency | n.a. |
| | 3128 | | | an..35 | Carrier name | n.a. |
| | 8101 | | | an..3 | Transit direction, coded | n.a. |
| | C401 | | | | EXCESS TRANSPORTATION INFORMATION | |
| | 8457 | | | an..3 | Excess transportation reason | n.a. |
| | 8459 | | | an..3 | Excess transportation responsibility | n.a. |

| 1 | 2 | 3 | 4 | 5 | 6 | 7 |
|------------|------------|---|----------|-------------------|--|---|
| | 7130 | | | an..17 | Customer authorization number | n.a. |
| | C222 | | M | | TRANSPORT IDENTIFICATION | |
| | 8213 | | M | an..9 (an7..8) | ID. of means of transport identification | <i>Vessel number</i> : 7 digits for IMO indication, 8 digits for unique European vessel identification number (ENI) |
| | 1131 | | | an..17 | Code list qualifier | 'IMO' for an IMO number, see Part IV, Article 2.03(2) 'ENI' for a unique European vessel identification number, see Part IV, Article 2.03(3) |
| | 3055 | | | an..3 | Code list responsible agency | n.a. |
| | 8212 | | M | an..35 | ID of the means of transport | <i>Name of the ship</i> . If the name results in more than 35 positions, the name of the vessel is shortened. |
| | 8453 | | M | an..3 | Nationality of means of transport | ISO two-alpha country code 3166-1, see Part IV, Article 2.03(8). If the nationality of the means of transport is not known, the 3 digit code of the country of the inspection body that issued the last vessel certificate shall be used. |
| | 8281 | | | an..3 | Transport ownership | n.a. |
| | | | | | | |
| TDT | RFF | | C | TDT | REFERENCE | |
| | C506 | | M | | REFERENCE | |
| | 1153 | | M | an..3 | Reference qualifier | 'VM' Vessel identification 'PEX' Pilotage exemption number |

| 1 | 2 | 3 | 4 | 5 | 6 | 7 |
|------------|------------|---|----------|------------|---|--|
| | 1154 | | M | an..70 | Reference number | Radio call sign if applicable or the identity of each barge/ vessel in a combination (ERI ID) Number of exemption |
| | 1156 | | | an..6 | Line number | n.a. |
| | 4000 | | | an..35 | Reference version number | n.a. |
| | 1060 | | | an..6 | Revision number | n.a. |
| | | | | | | |
| TDT | DTM | | C | TDT | DATE/TIME/PERIOD | |
| | C507 | | M | | DATE/TIME/PERIOD | |
| | 2005 | | M | an..3 | Date or time or period function code qualifier | Local time at the place of arrival Code '132' = ETA |
| | 2380 | | M | an..35 | Date or time period value | Date/time: CCYYMMDDHHMM |
| | 2379 | | M | an..3 | Date or time or period format code | '203' |
| | | | | | | |
| TDT | MEA | | C | TDT | MEASUREMENTS | |
| | 6311 | | M | an..3 | Measurement purpose qualifier | Measurement application qualifier: 'AAE' Measurement |
| | C502 | | M | | MEASUREMENT DETAILS | |

| 1 | 2 | 3 | 4 | 5 | 6 | 7 |
|---|------|---|---|--------|--------------------------------------|--|
| | 6313 | | M | an..3 | Property measured | Measurement dimension: 'AAM' Gross tonnage of vessel, BT 'AAN' Net tonnage of vessel 'ACS' Length overall, 'ADS' Length bow to bridge 'WM' Width, maximum 'DP' Draft, maximum (depth) 'HM' Height maximum above the water (air draft) |
| | 6321 | | | an..3 | Measurement significance | n.a. |
| | 6155 | | | an..17 | Measurement attribute identification | n.a. |
| | 6154 | | | an..70 | Measurement attribute | n.a. |
| | C174 | | M | | VALUE/RANGE | |
| | 6411 | | M | an..3 | Measurement unit qualifier | Measure unit qualifier: 'TNE' Metric tons 'CMT' Centimetre 'MTR' Metre |
| | 6314 | | M | n..18 | Measurement value | |
| | 6162 | | | n..18 | Range minimum | n.a. |
| | 6152 | | | n..18 | Range maximum | n.a. |
| | 6432 | | | n..2 | Significant digits | n.a. |
| | 7383 | | | an..3 | Surface/layer indicator | n.a. |

| 1 | 2 | 3 | 4 | 5 | 6 | 7 |
|------------|------------|---|----------|------------|-----------------------------|---|
| <i>TUT</i> | FTX | | C | TDT | FREE TEXT | |
| | 4451 | | M | an..3 | Text subject code qualifier | General subject indicator Text subject type 'ACB' Additional information 'AFJ' Defect description 'HAZ' Hazardous 'AAA' General goods description 'WAS' Waste reporting 'VES' vessel particulars |
| | 4453 | | C | an..3 | Free text function code | If text subject is ACB, WAS, AAA or AFJ, here the dangerous goods can be indicated through: 'DGN' = No dangerous goods 'DGY' = Dangerous goods on board |
| | C107 | | C | | TEXT REFERENCE | |

| 1 | 2 | 3 | 4 | 5 | 6 | 7 |
|---|------|---|---|---------|------------------------------|---|
| | 4441 | | C | an..17 | Free text identification | 'WEX' = Waste report exempt for 'WAS' 'CGS' = Cargo is gassed for 'ACB' For 'HAZ': Co0 = 0 Cone Co1 = 1 Cones Co2 = 2 Cones Co3 = 3 Cones 'B' = Red Flag (B) for IMO 'V' special permit |
| | 1131 | | | an..17 | Code list qualifier | n.a. |
| | 3055 | | | an..3 | Code list responsible agency | n.a. |
| | C108 | | M | | | |
| | 4440 | | C | an..512 | Free text | Text description of defects such as AIS, Navigation equipment radar, engine, rudder, etc. |
| | 4440 | | | an..512 | Free text | n.a. |
| | 4440 | | | an..512 | Free text | n.a. |
| | 4440 | | | an..512 | Free text | n.a. |
| | 4440 | | | an..512 | Free text | n.a. |
| | 3453 | | | an..3 | Language, coded | n.a. |
| | 4447 | | | an..3 | Text formatting, coded | n.a. |
| | | | | | | |

| 1 | 2 | 3 | 4 | 5 | 6 | 7 |
|-----------------|------------|------|----------|--------------------|---|--|
| <i>TDT GR 4</i> | LOC | | M | TDT | PLACE/LOCATION IDENTIFICATION | Port. |
| | 3227 | | M | an..3 | Place/location qualifier | Place/location qualifier: '5' Place of departure '94' Previous of port of call '61' Next port of call '89' Place of registration '153' Port of call |
| | C517 | | M | | LOCATION IDENTIFICATION | |
| | | 3225 | M | an..25 (an5) | Place/location identification | UNECE location code (Rec. 16) of the port, see Part IV, Article 2.03(9) |
| | | 1131 | | an..17 | Code list qualifier | n.a. |
| | | 3055 | | an..3 | Code list responsible agency | n.a. |
| | | 3224 | C | an..256 | Place/location | Full name of the port |
| | C519 | | C | | RELATED LOCATION ONE IDENTIFICATION | |
| | | 3223 | M | an..25 (an..5) | Related place/location one identification | Terminal code, see Part IV, Article 2.03(11) |
| | | 1131 | | an..17 | Code list qualifier | n.a. |
| | | 3055 | | an..3 | Code list responsible agency | n.a. |
| | | 3222 | D[Use 1] | an..70 (an..17) | Related place/location one | Full name of the terminal |

| 1 | 2 | 3 | 4 | 5 | 6 | 7 |
|-----------------|------------|---|----------|----------------|--|---|
| | C553 | | C | | RELATED LOCATION TWO IDENTIFICATION | |
| | 3233 | | C | an..25 (an..5) | Related place/location two identification | Fairway section code, see Part IV, Article 2.03(10) |
| | 1131 | | | an..17 | Code list qualifier | |
| | 3055 | | | an..3 | Code list responsible agency | n.a. |
| | 3232 | | C | an..70 (an..5) | Related place/location two | Fairway section hectometre |
| | 5479 | | | an..3 | Relation | n.a. |
| | | | | | | |
| | DTM | | C | TDT/LOC | DATE/TIME/PERIOD | Required if place of registration is given |
| | C507 | | M | | DATE/TIME/PERIOD | |
| | 2005 | | M | an..3 | Date or time or period function code qualifier | '259' Registration date |
| | 2380 | | M | an..35 | Date or time period value | Date: CCYMMDD |
| | 2379 | | M | an..3 | Date or time or period format code | '102' date format |
| | | | | | | |
| <i>TSR Gr 7</i> | TSR | | M | | Transport service requirements | |
| | C536 | | | | Contract and carriage condition | n.a. |
| | 4065 | | | an..3 | Contract and carriage condition code | n.a. |
| | 1131 | | | an..17 | Code list identification code | n.a. |

| 1 | 2 | 3 | 4 | 5 | 6 | 7 |
|---|------|---|---|--------|-----------------------------------|---|
| | 3055 | | | an..3 | Code list responsible agency code | n.a. |
| | C233 | | M | | Service | |
| | 7273 | | M | an..3 | Service requirement code | Service requirement: 'BER' Request for mooring service at a berth 'PIL' Request for pilot service 'VTS' Request for Vessel Traffic Services 'TUG' Request for tugboat service 'MAR' Planned handling of MARPOL substances 'SEC' Security services |
| | 1131 | | | an..17 | Code list identification code | n.a. |
| | 3055 | | | an..3 | Code list responsible agency code | n.a. |
| | 7273 | | | an..3 | Service requirement code | n.a. |
| | 1131 | | | an..17 | Code list identification code | n.a. |
| | 3055 | | | an..3 | Code list responsible agency code | n.a. |
| | C537 | | | | Transport priority | |
| | 4219 | | | an..3 | Transport service priority code | n.a. |
| | 1131 | | | an..17 | Code list identification code | n.a. |
| | 3055 | | | an..3 | Code list responsible agency code | n.a. |
| | C703 | | | | Nature of cargo | |
| | 7085 | | | an..3 | Cargo type classification code | n.a. |

| 1 | 2 | 3 | 4 | 5 | 6 | 7 |
|-----------------|------------|---|----------|----------------|--------------------------------------|--|
| | 1131 | | | an..17 | Code list identification code | n.a. |
| | 3055 | | | an..3 | Code list responsible agency code | n.a. |
| | | | | | | |
| <i>TSR</i> | QTY | | C | TSR/QTY | QUANTITY | To indicate the number of crew, passengers and others such as pets or other animals |
| | C186 | | M | | Quantity details | |
| | 6063 | | M | an..3 | Quantity type code qualifier | '115' = Total number of crew on board including the master '114' = Total number of people on board '14' = Total number of animals on board |
| | 6060 | | M | an...35 | Quantity | Number e.g. 4 |
| | 6411 | | C | an..8 | Measure unit code | n.a. |
| | | | | | | |
| <i>TSR Gr 8</i> | LOC | | M | TSR | PLACE/LOCATION IDENTIFICATION | Port |
| | 3227 | | M | an..3 | Place/location qualifier | Place/location qualifier: '5' Place of departure '94' Previous of port of call '61' Next port of call '89' Place of registration '153' Port of call |
| | C517 | | M | | LOCATION IDENTIFICATION | |

| 1 | 2 | 3 | 4 | 5 | 6 | 7 |
|---|------|---|----------|---------------------|---|---|
| | 3225 | | M | an..25 (an5) | Place/location identification | UNECE location code (Rec. 16) of the port, see Part IV, Article 2.03(9) |
| | 1131 | | | an..17 | Code list qualifier | n.a. |
| | 3055 | | | an..3 | Code list responsible agency | n.a. |
| | 3224 | | C | an..256 (an..17) | Place/location | Full name of the port location |
| | C519 | | C | | RELATED LOCATION ONE IDENTIFICATION | |
| | 3223 | | M | an..25 (an..5) | Related place/location one identification | Terminal code, see Part IV, Article 2.03(11) |
| | 1131 | | | an..17 | Code list qualifier | n.a. |
| | 3055 | | | an..3 | Code list responsible agency | n.a. |
| | 3222 | | D[Use 1] | an..70 (an..35) | Related place/location one | Full name of the terminal |
| | C553 | | C | | RELATED LOCATION TWO IDENTIFICATION | |
| | 3233 | | M | an..25 (an..5) | Related place/location two identification | Fairway section code, see Part IV, Article 2.03(10) |
| | 1131 | | | an..17 | Code list qualifier | |
| | 3055 | | | an..3 | Code list responsible agency | n.a. |
| | 3232 | | C | an..70 (an..5) | Related place/location two | Fairway section hectometre |
| | 5479 | | | an..3 | Relation | n.a. |

| 1 | 2 | 3 | 4 | 5 | 6 | 7 |
|-------------|------------|---|----------|----------------|---|---|
| <i>Gr 8</i> | DTM | | C | TSR/LOC | DATE/TIME/PERIOD | Date and time of the start of the transport service requirement |
| | C507 | | M | | DATE/TIME/PERIOD | |
| | 2005 | | M | an..3 | Date or time or period function code qualifier | '132' Arrival date/time, estimated |
| | 2380 | | M | an..35 | Date or time period value | Time: CCYYMMDDHHMM |
| | 2379 | | M | an..3 | Date or time or period format code | '203' |
| | | | | | | |
| <i>Gr 8</i> | QTY | | C | TSR/LOC | QUANTITY | |
| | C186 | | M | | Quantity details | Quantity details |
| | 6063 | | M | an..3 | Quantity type code qualifier: | Quantity type code qualifier: '1' Discrete quantity |
| | 6060 | | M | an..35 | Quantity | Number of tugboats required Number of linesman |
| | 6411 | | | an..3 | Measurement unit code | n.a. |
| | | | | | | |
| <i>Gr 8</i> | POC | | M | TSR | PURPOSE OF CALL | |
| | C525 | | M | | Purpose of conveyance call | Purpose of conveyance call |

| 1 | 2 | 3 | 4 | 5 | 6 | 7 |
|-------------|------------|---|----------|----------------|--|---|
| | 8025 | | M | an..3 | Conveyance call purpose description code | '1' Cargo operation '2' Passenger movement '3' Taking bunkers '4' Changing crew '5' Goodwill visit '6' Taking supplies '7' Repair '8' Laid-up '9' Awaiting orders '10' Miscellaneous '11' Crew movement '12' Cruise, leisure and recreation '13' This is a visit to a port which has been ordered by government '14' Quarantine inspection '15' Refuge '16' Tank cleaning '17' Waste disposal |
| | 1131 | | | an..17 | Code list identification code | n.a. |
| | 3055 | | | an..3 | Code list responsible agency code | n.a. |
| | 8024 | | | an..35 | Conveyance call purpose description | n.a. |
| Gr 8 | FTX | | C | TSR/LOC | FREE TEXT | Only to be used for security information |

| 1 | 2 | 3 | 4 | 5 | 6 | 7 |
|---|------|---|---|---------|------------------------------|---|
| | 4451 | | M | an..3 | Text subject code qualifier | The security information may be given in 4441 'SEC' Current security information |
| | 4453 | | | an..3 | Free text function code | n.a. |
| | C107 | | M | | TEXT REFERENCE | |
| | 4441 | | M | an..17 | Free text identification | Level of security S1 Security level 1 S2 Security level 2 S3 Security level 3 |
| | 1131 | | | an..17 | Code list qualifier | n.a. |
| | 3055 | | | an..3 | Code list responsible agency | n.a. |
| | C108 | | M | | | |
| | 4440 | | M | an..512 | Free text | Further remarks 'PER' followed by the number of persons on board. |
| | 4440 | | C | an..512 | Free text | ISSC information 'SCN' Security certificate not available 'SCY' Security certificate on board |
| | 4440 | | C | an..512 | Free text | Here the brand of the car and licence plate number can be given 'CAR' licence number |
| | 4440 | | C | an..512 | Free text | Free text: Name of the service provider requested for in the TSR segment |

| 1 | 2 | 3 | 4 | 5 | 6 | 7 |
|-----------------|------------|---|----------|----------------|-------------------------------------|---|
| | 4440 | | | an..512 | Free text | n.a. |
| | 3453 | | | an..3 | Language, coded | n.a. |
| | 4447 | | | an..3 | Text formatting, coded | n.a. |
| | | | | | | |
| <i>LOC Gr 9</i> | HAN | | C | TSR/LOC | HANDLING INSTRUCTIONS | |
| | C524 | | M | | HANDLING INSTRUCTIONS | Handling instructions |
| | 4079 | | M | an..3 | Handling instructions, coded | Handling instructions coded: 'LLO' 'LOA' = Loading 'LDI' 'DIS' = Discharge 'RES' 'RES' = Re-stow 'T' 'TRA' = Transit 'TSP' 'CTC' = Cargo tank cleaning 'BUN' 'BUN' = Bunkering only 'DRY' 'RED' = Repairs in dry-dock 'WET' 'REW' = Repairs in wet-dock 'NCO' = No cargo operation |
| | 1131 | | | an..17 | Code list qualifier | n.a. |
| | 3055 | | | an..3 | Code list responsible agency, coded | n.a. |
| | 4078 | | C | an..70 | Handling instructions | Bolder numbers, preferred side for berthing, pilot embarkation point, MFO, MDF, fresh water, etc. |
| | C218 | | | | HAZARDOUS MATERIAL | |

| 1 | 2 | 3 | 4 | 5 | 6 | 7 |
|------------------|------------|---|----------|---------------------|---|------|
| | 7419 | | | an..7 | Hazardous material class code, identification | n.a. |
| | 1131 | | | an..17 | Code list qualifier | n.a. |
| | 3055 | | | an..3 | Code list responsible agency coded | n.a. |
| | 7418 | | | an..35 | Hazardous material class | n.a. |
| | | | | | | |
| <i>HAN Gr 10</i> | GDS | | M | TSR/LOC /HAN | NATURE OF CARGO | |
| | C703 | | M | | Nature of cargo | |

| 1 | 2 | 3 | 4 | 5 | 6 | 7 |
|---|------|---|---|--------|-------------------------------------|--|
| | 7085 | | M | an..3 | Cargo type classification code | Nature '5' Other non-containerised '6' Vehicles '7' Roll-on roll-off '8' Palletised '9' Containerised '10' Break bulk '11' Hazardous cargo '12' General cargo '13' Liquid cargo '14' Temperature controlled cargo '15' Environmental pollutant cargo '16' Not-hazardous cargo '17' Diplomatic '18' Military '19' Obnoxious '21' Household goods '22' Frozen cargo '30' Cargo in bulk (sand, gravel, ore, etc.) |
| | 1131 | | | an..17 | Code list identification code. | n.a. |
| | 3055 | | | an..3 | Code list responsible agency, coded | n.a. |
| | | | | | | |

| 1 | 2 | 3 | 4 | 5 | 6 | 7 |
|---|------------|---|----------|----------------------------------|--------------------------------------|--|
| | MEA | | C | TSR/LOC /HAN/ GDS | MEASUREMENTS | |
| | 6311 | | M | an..3 | Measurement purpose qualifier | Measurement application qualifier: 'AAE' Measurement |
| | C502 | | M | | MEASUREMENT DETAILS | Measurement details |
| | 6313 | | M | an..3 | Property measured | Measurement dimension: 'G' Gross weight |
| | 6321 | | | an..3 | Measurement significance | n.a. |
| | 6155 | | | an..17 | Measurement attribute identification | n.a. |
| | 6154 | | | an..70 | Measurement attribute | n.a. |
| | C174 | | M | | VALUE/RANGE | |
| | 6411 | | M | an..3 | Measurement unit qualifier | Measure unit qualifier: 'KGM' Kilogram 'TNE' Metric tons |
| | 6314 | | M | n..18 | Measurement value | Weight |
| | 6162 | | | n..18 | Range minimum | n.a. |
| | 6152 | | | n..18 | Range maximum | n.a. |
| | 6432 | | | n..2 | Significant digits | n.a. |
| | 7383 | | | an..3 | Surface/layer indicator | |
| | | | | | | |

| 1 | 2 | 3 | 4 | 5 | 6 | 7 |
|---|------------|---|----------|--------|---------------------------------|---|
| | UNT | | M | | MESSAGE TRAILER | End and control of completeness of the message |
| | 0074 | | M | n..10 | Number of segments in a message | |
| | 0062 | | M | an..14 | Message reference number | First 14 positions of the message reference number |
| | | | | | | |
| | UNZ | | M | | INTERCHANGE TRAILER | End and control of the interchange |
| | 0036 | | M | n..6 | Interchange control count | '1' for number of messages contained in the interchange |
| | 0020 | | M | an..14 | Interchange control reference | First 14 positions of the message reference number |

| Business rules | |
|-----------------------|--|
| D[USE 1] | If the code is XXXXX, then this data-element shall be completed. |

ANNEX 16

VOYAGE PLAN NOTIFICATION - ERIVROY

1. Introduction

1.1 Objective of the message

In line with the developments in inland shipping to increasingly use Information and Communication Technologies (ICT) for the exchange of data with authorities and partners, the standardised message for voyage plan notification, ERIVROY is meant to be used as a message type from a carrier, its agent or a vessel to the responsible waterway authorities and where applicable involved commercial parties or between the waterway authorities mutually, reporting a voyage plan and its particulars and giving details of the voyage, vessel, intended voyage details and expected passage of waypoints and other key passage points. It is meant to provide a transport route schedule of a certain vessel and its voyage.

The advance availability of routing information will make communication with the involved parties such as the waterway authorities easier and will facilitate handling of certain requests and will ensure easier and safer passages of locks, bridges or of other events that could impact the planification of the voyage. In this way a better planning of a voyage is feasible. In the event of changes or disaster, planning becomes easier and vessel traffic services and management are facilitated. In that way using this message increases the performance and reliability during the voyage of a vessel or a convoy.

1.2 Functional definition

The functional definition of the ERIVROY message is as follows:

Send a notification message as described in the "objective of the message"

Request an update of the message and send the answer to this request.

- A waterway authority can inform the skipper if the time-difference between the calculation of the skipper significantly differs of the calculation by the authority(ies)

1.3 Message principles

The following principles are applicable to the voyage plan message:

- a) The function of this message is to provide a transport route schedule of a certain vessel.
- b) One message relates to one voyage plan.
- c) The message incorporates the legal requirements regarding the notification of the planned voyage of a vessel to the waterway authorities.
- d) The voyage plan contains all details regarding the (planned) movement of the vessel from the place of departure to the place of arrival at the first berth in the port area. More than one destination will be possible (in case of two or more ports as destination of a journey). Preferably a new updated voyage plan will be created after the arrival at a port or the first port of a journey.

- e) The responsibility for the definition of a waypoint lies primarily with the sender of the message so primarily the skipper. It is possible to define less waypoints to be mandatory for voyages of a long distance. The carrier, its agent or the skipper will declare the ETA for those waypoints on a voyage which are considered essential to ensure a good overview of the chosen route.
- f) A message update should be sent in case of an unexpected (long) waiting time e.g. at one lock.
- g) The information related to ETA at certain waypoints and key points such as movable bridges, locks and other essential passage points of the vessel are mandatory datafields in the message. This ETA may be estimated through a period of time (time span) that the vessel is to be expected at a certain point. This can be considered as the timespan between the first possible arrival time and last possibility of arrival.
- h) The voyage status information will be reported in addition to other reporting messages whereby the repetition of the same data will be avoided wherever possible.
- i) The ETD from the berth and the next port of call of the vessel is mandatory information if the message is sent before departure of the vessel.
- j) The message caters for the provision of sending a Replacement, Modification, Status update or a cancellation of a previously sent original message.

1.4 Necessary data in accordance with the user requirements

In accordance with the user requirements for the ERI voyage plan message the following information is required:

- a) Name of the vessel
- b) Type of vessel (see Annex 6)
- c) Unique vessel identification number
- d) Nationality (country of the inspection body that issued the last vessel certificate)
- e) Voyage plan status
- f) Name of skipper
- g) Length and width of the vessel
- h) Length and width of the convoy (including possible oversize cargo)
According to experience gained it is important to provide information about the dimensions of a convoy as a whole. This can be done best by providing the maximum length and the maximum width. This information is essential for lock planning in particular.
- i) Draught
- j) Air draught (highest point of vessel or convoy above the waterlevel)
- k) Average estimated speed over ground for a certain voyage (cruising speed)
- l) Origin of the voyage (Place of departure)
- m) Voyage destination in compliance with the voyage definition
- n) Date / time of departure (estimated and actual)
- o) Start of daily navigation
- p) End of daily navigation

- q) Preference for passing locks or bridges on demand
A skipper may specify its preference regarding how to pass objects along his voyage, with the 3 following possibilities:
Normal: he only wants to pass locks or bridges on regular opening hours
All Free: he wants to pass locks or bridges on regular opening hours and “on demand” but only when this is free of charge
All: he wants to pass locks or bridges on regular opening hours and “on demand” even if he has to pay on call
- r) Waypoints (key passage points)
- s) ETA waypoints (including estimated passage time of border) or where applicable the period through 2379 code 713 = YYMMDDHHMM - YYMMDDHHMM
- t) ETD waypoints (where required estimated period of time = YYMMDDHHMM – YYMMDDHHMM in actual message without hyphen).
- u) ATA waypoints (including actual passage time of border)
- v) ATD waypoints
- w) Other relevant information for the calculation of the voyage
It is possible to specify here any additional relevant information that can be useful for the calculation of the voyage.
- x) Number of persons on board
- y) Brief description of cargo.

2. XML format of ERIVROY message

The Voyage Plan Notification (ERIVROY) can be used using XML formatting.

Appendix 1 XML format of ERIVROY message, XSD file (source code) (Distributed separately)

